

3rd European Railway Photography Contest

CER is happy to launch the 3rd edition of its annual European Railway Photography Contest. **12 pictures**, highlighting the **modern, environmentally-friendly and human dimensions** of railways will be selected to illustrate the 2016 CER calendar. Winners will receive each a **200 euros prize**.

High resolution photographs should be submitted electronically via the [CER website](#) before **Friday, 16 October 2015**.

The contest is open to **all residents** of the 28 Member States of the European Union, Albania, Bosnia Herzegovina, Georgia, Macedonia, Moldova, Montenegro, Norway, Serbia, Switzerland and Turkey. Only photos taken in the above mentioned countries can be submitted. Please consult the **complete rules of the contest** below or on the [CER website](#).

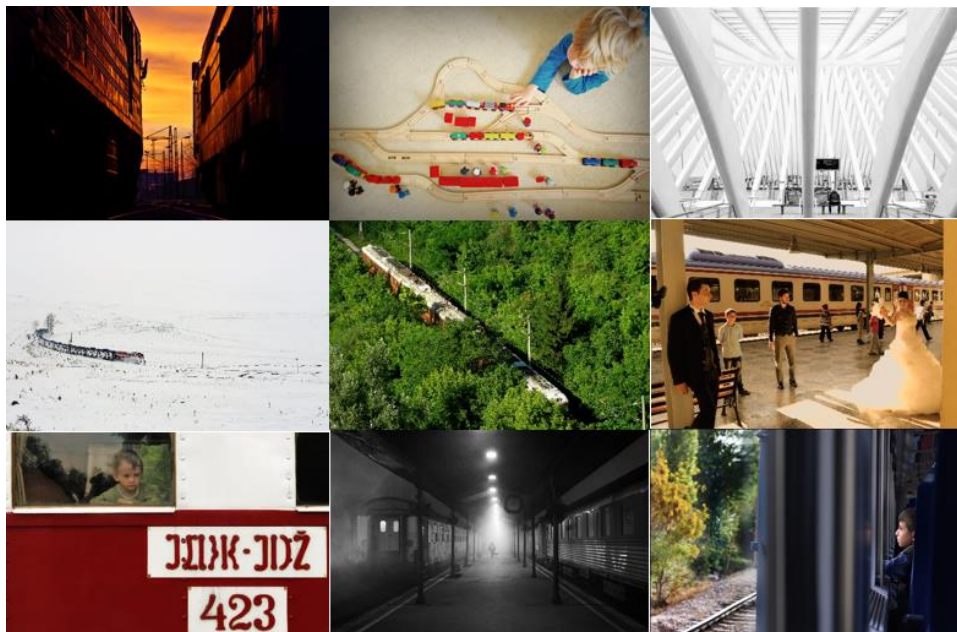


Photo contest rules

1. ELIGIBILITY

- The contest is open to residents of the 28 Member States of the European Union, Albania, Bosnia Herzegovina, Georgia, Macedonia, Moldova, Montenegro, Norway, Serbia, Switzerland and Turkey.
- Only photos taken in the above mentioned countries can be submitted.
- Photos explicitly identifying trains and commercial brands in general are to be avoided.

2. CRITERIA

- Originality of the subject;
- Artistic quality;
- Human and positive touch;
- Origin of the photos: the 12 winning photos should reflect cultural diversity.

3. SUBMISSION

- Entries are to be digital photographs submitted electronically via the [CER website](#) with the subject line "3rd European Railway photography Contest".
- Only high-resolution photos (at least 1600 pixels wide) will be accepted, preferably in horizontal format.
- A maximum of 5 pictures per person will be allowed.
- A copy of the CER contest form (including contact details and description of the picture) must be submitted together with the photo.

4. DEADLINE

- All entries must be submitted prior to Friday, 16 October 2015.

5. PRIZE

- 12 pictures will be selected.

- Winners will receive each a 200 euros prize and a copy of the CER calendar.
- Winning photos will be published in the CER 2016 calendar which will be widely distributed. Name of the photographer, country and any other relevant information will be credited.

6. RELEASES

- For a photo on which a person is recognisable, a model release is required. Model releases are the responsibility of the entrant and must be presented in the event the photo is a winner.

7. COPYRIGHT

- Entrants must own all rights to the photographs submitted. Entrants warrant that the submitted photograph is an original work which does not infringe on the copyrights, trademarks, moral rights, rights of privacy/publicity or intellectual property rights of any person or entity. As such, entrants hold CER harmless from any breach of copyright.

8. PUBLICATION AND LICENSE

- Winners' names and photographs will be published in the CER 2016 calendar and on www.cer.be. By entering the contest, all entrants grant a non-exclusive license to CER to publish or use any entry in their communications materials. Photos published will be credited to the photographer. CER will not be required to pay any additional consideration or seek any additional approval in connection with such use.

9. RIGHT TO CANCEL OR SUSPEND CONTEST

- If for any reason the contest is not capable of running as planned, CER reserves the right to cancel or suspend the contest. CER will not retain any rights in the submitted photographs.

10. ACCEPTANCE

- Participation in the contest implies acceptance of the present rules.



Contact Person

Aline Bastin

Manager Press & Communications

E: aline.bastin@cer.be

T: +32 (0)2 213 08 72

F: +32 (0)2 512 52 31

About CER

The Community of European Railway and Infrastructure Companies (CER) brings together more than 70 railway undertakings, their national associations as well as infrastructure managers and vehicle leasing companies. The membership is made up of long-established bodies, new entrants and both private and public enterprises, representing 73% of the rail network length, 80% of the rail freight business and about 96% of rail passenger operations in EU, EFTA and EU accession countries. CER represents the interests of its members towards EU policy makers and transport stakeholders, advocating rail as the backbone of a competitive and sustainable transport system in Europe. For more information, visit www.cer.be or follow us via Twitter at @CER_railways.