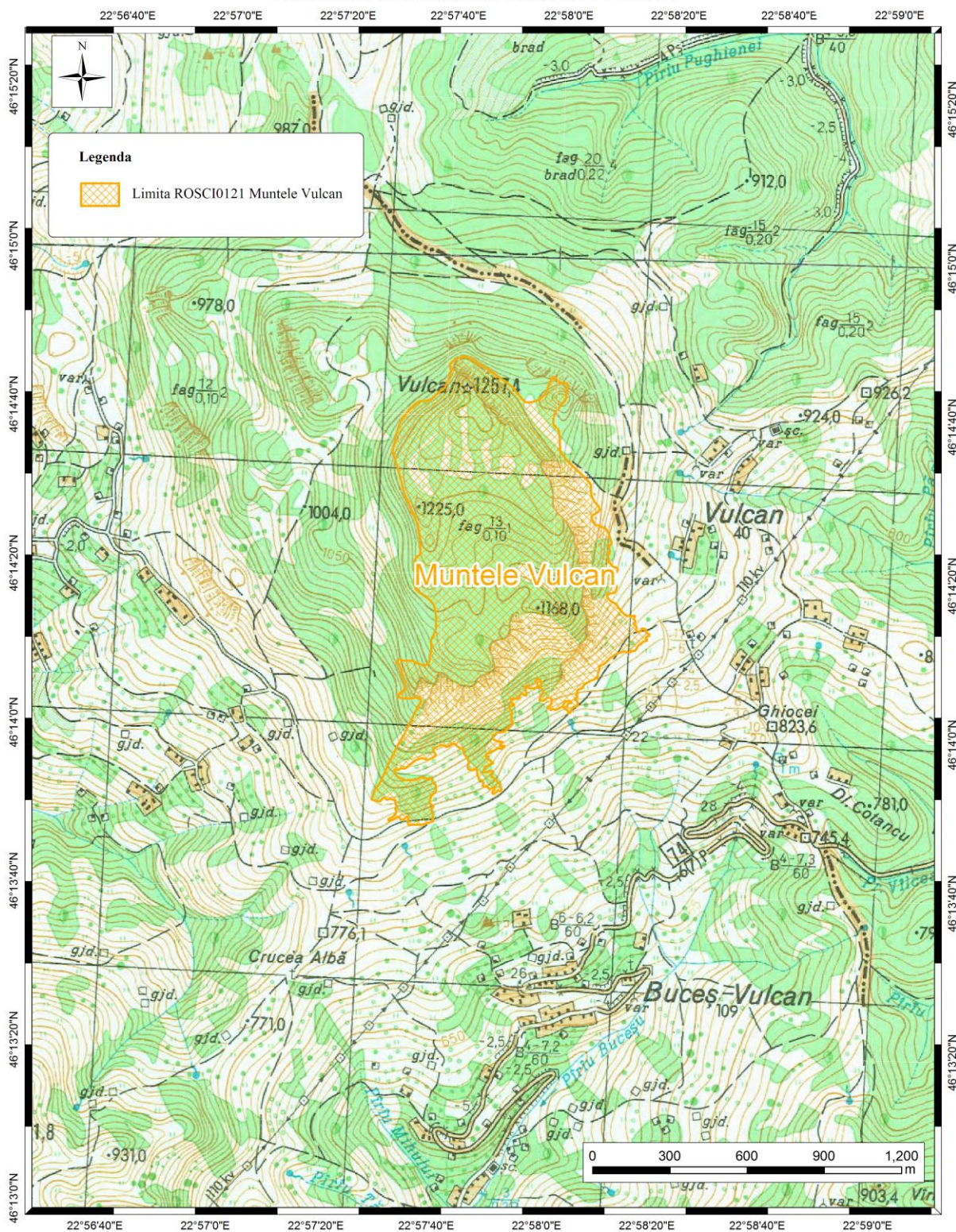
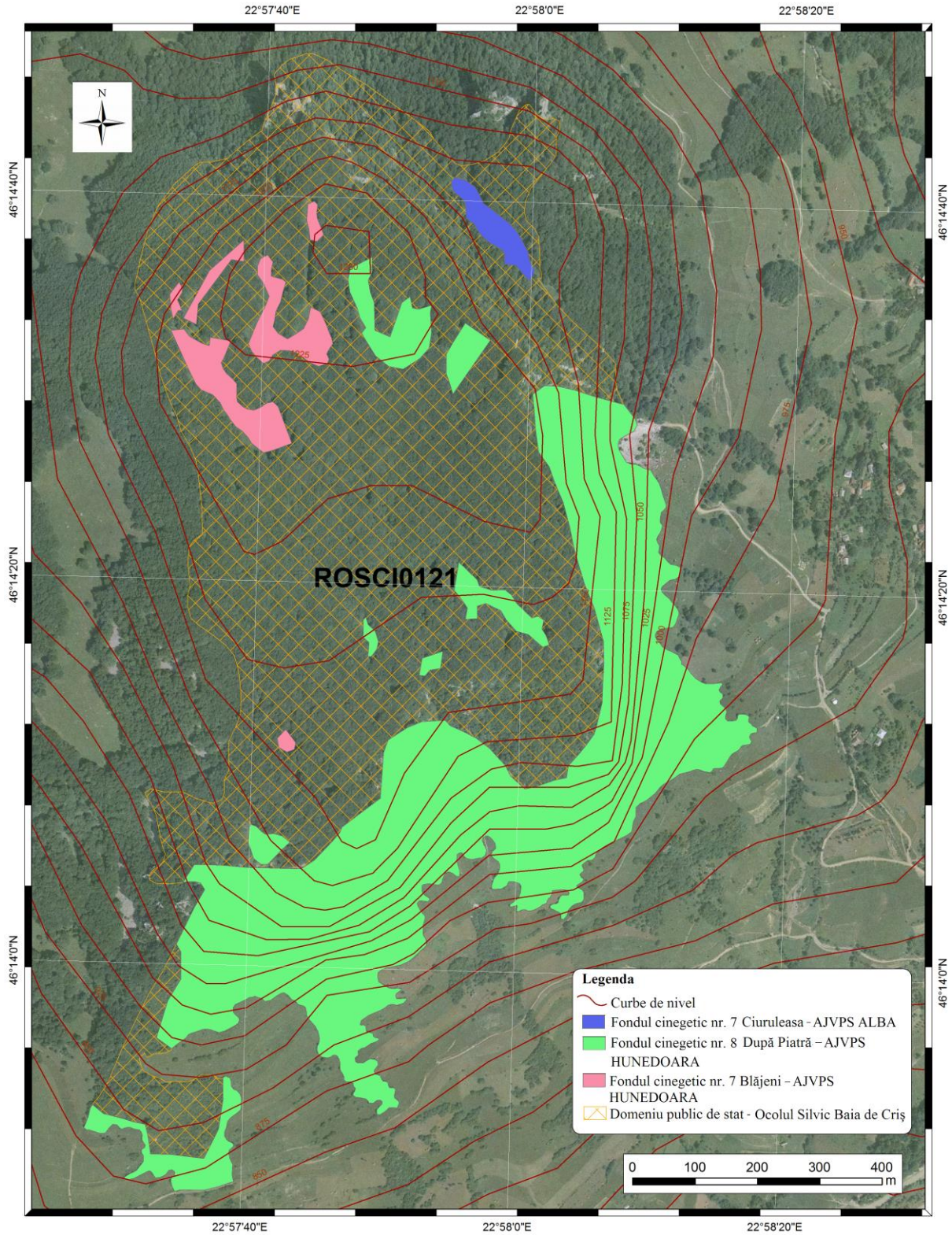


### LOCALIZAREA ROSCIO121 MUNTELE VULCAN



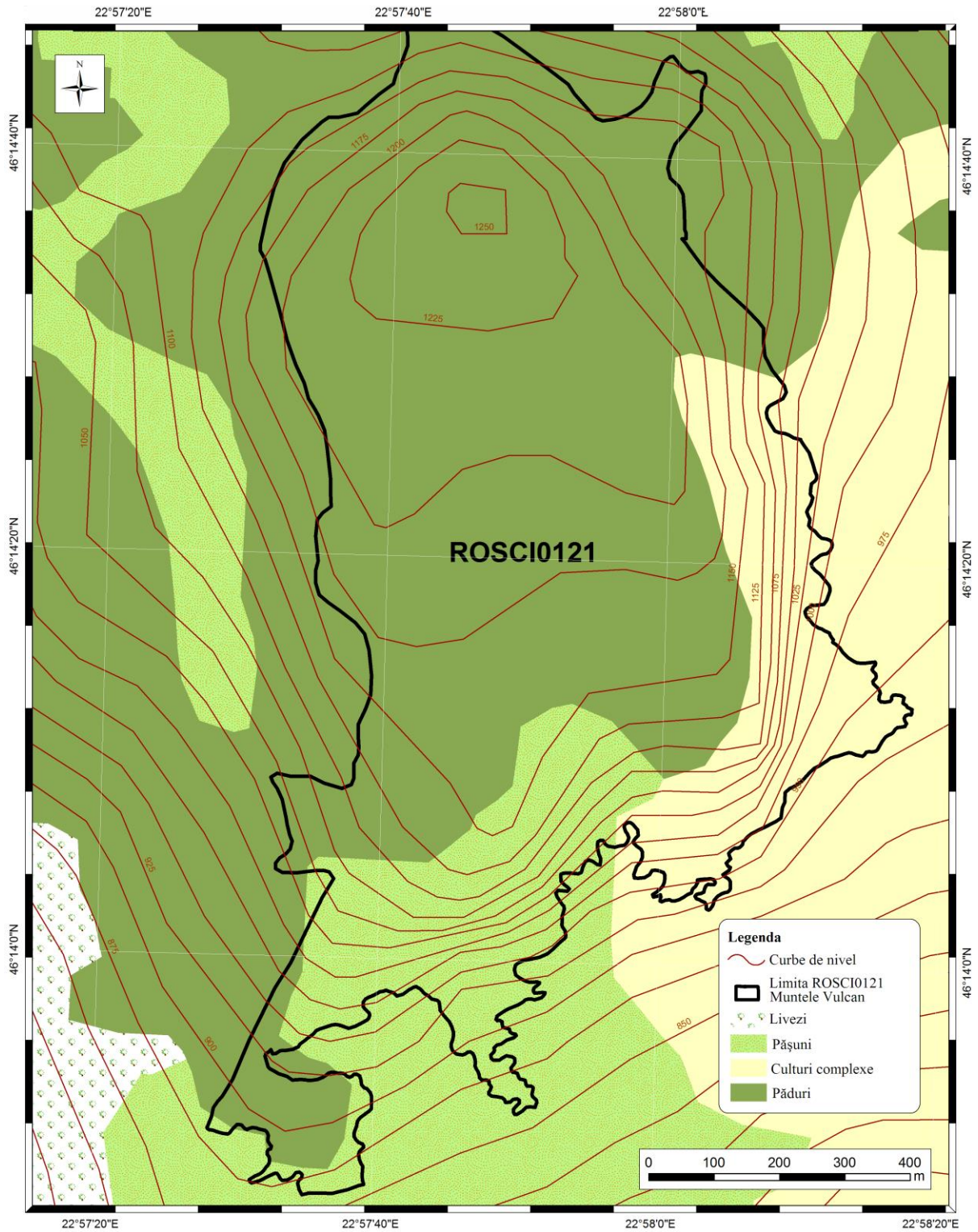


PROPRIETATEA TERENURILOR ÎN ROSCI0121 MUNTELE VULCAN



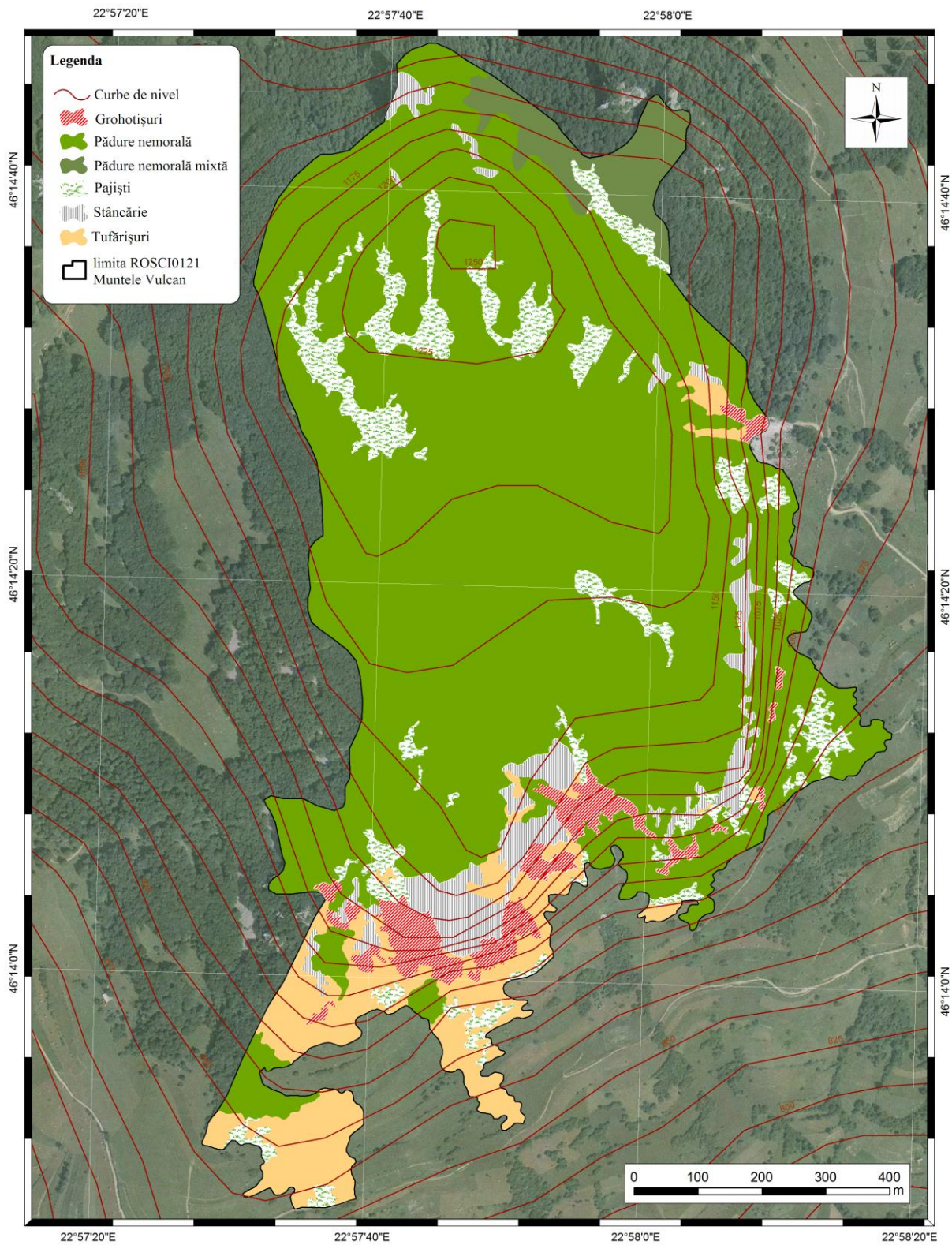


UTILIZAREA TERENURILOR CONFORM CORINE LAND COVER ÎN ROSCI0121 MUNTELE VULCAN



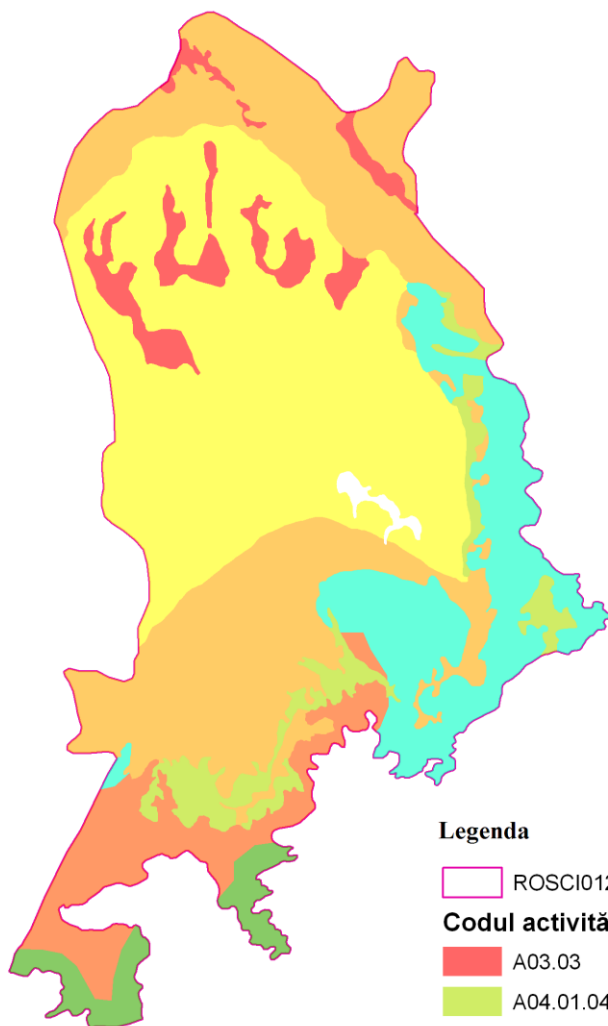


### TIPUL DE UTILIZARE A TERENURILOR





**HARTA PRESIUNILOR ACTUALE ȘI A INTENSITĂȚII ACESTORA  
LA NIVELUL ARIEI NATURALE PROTEJATE ROSCI0121 MUNTELE VULCAN**



**Legenda**

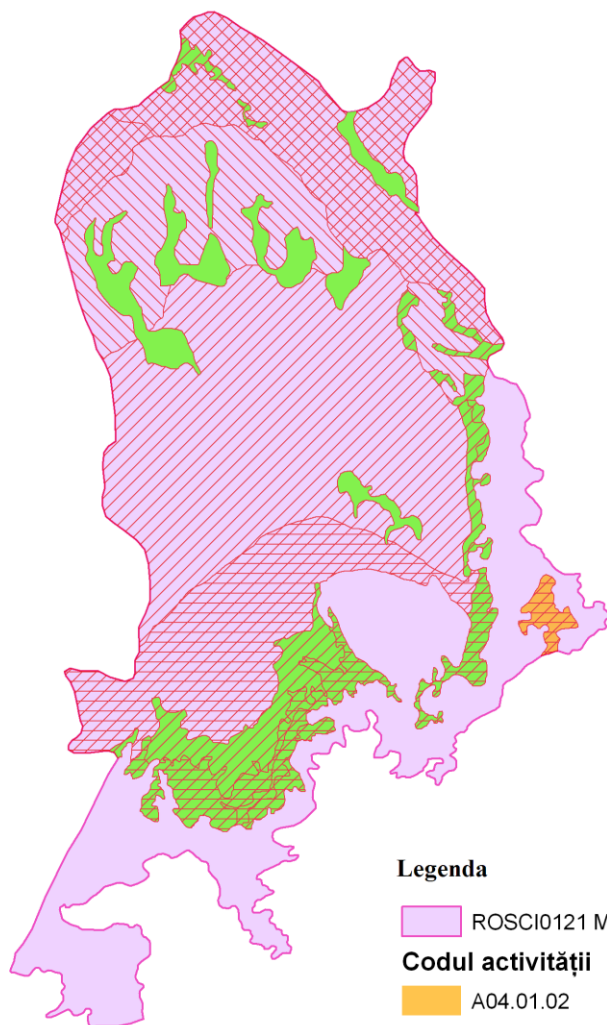
ROSCI0121 Muntele Vulcan

<b>Codul activității</b>	<b>Intensitatea</b>
A03.03	ridicată
A04.01.04	medie
B02	scăzută
B04	scăzută
F04.02	scăzută
G01.04	medie
K04	medie







1:10.000



**HARTA AMENINȚĂRILOR VIITOARE ȘI A INTENSITĂȚII  
ACESTORA LA NIVELUL ARIEI NATURALE PROTEJATE  
ROSCI0121 MUNTELE VULCAN**



**Legenda**

	ROSCI0121 Muntele Vulcan	
<b>Codul activității</b>		<b>Intensitatea</b>
	A04.01.02	medie
	K02.01	scăzută
	B02.04	scăzută
	J01.01	medie
	M01.02	scăzută

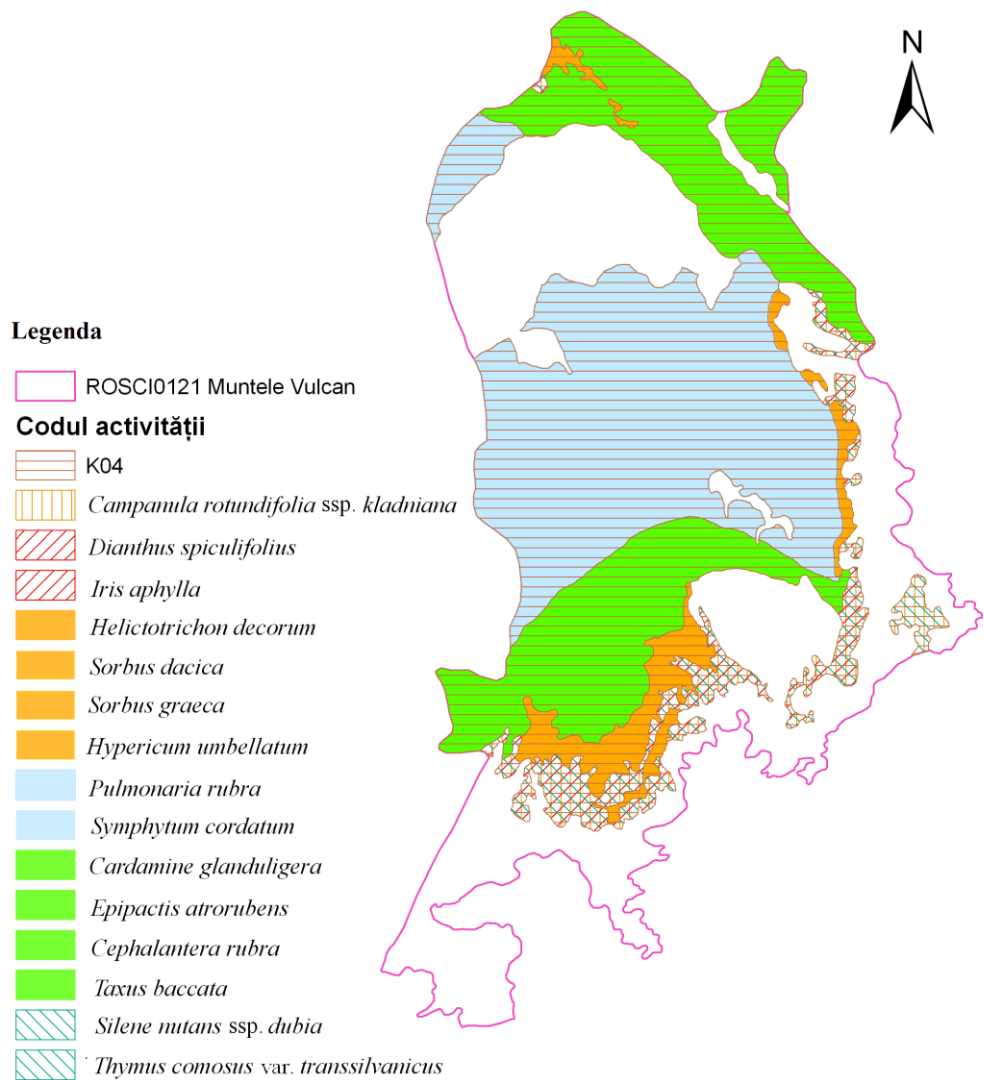
1:10.000



**PRESIUNI ACTUALE ASUPRA SPECIILOR DE PLANTE**

*Helictotrichon decorum, Sorbus dacica, Sorbus graeca, Iris aphylla, Symphytum cordatum, Thymus comosus var. transsilvanicus, Dianthus spiculifolius, Hypericum umbellatum, Cephalantera rubra, Epipactis atrorubens, Pulmonaria rubra, Taxus baccata, Cardamine glanduligera, Silene mutans ssp. dubia, Campanula rotundifolia ssp. kladniana,*

**LA NIVELULARIEI NATURALE PROTEJATE ROSCI0121 MUNTELE VULCAN**



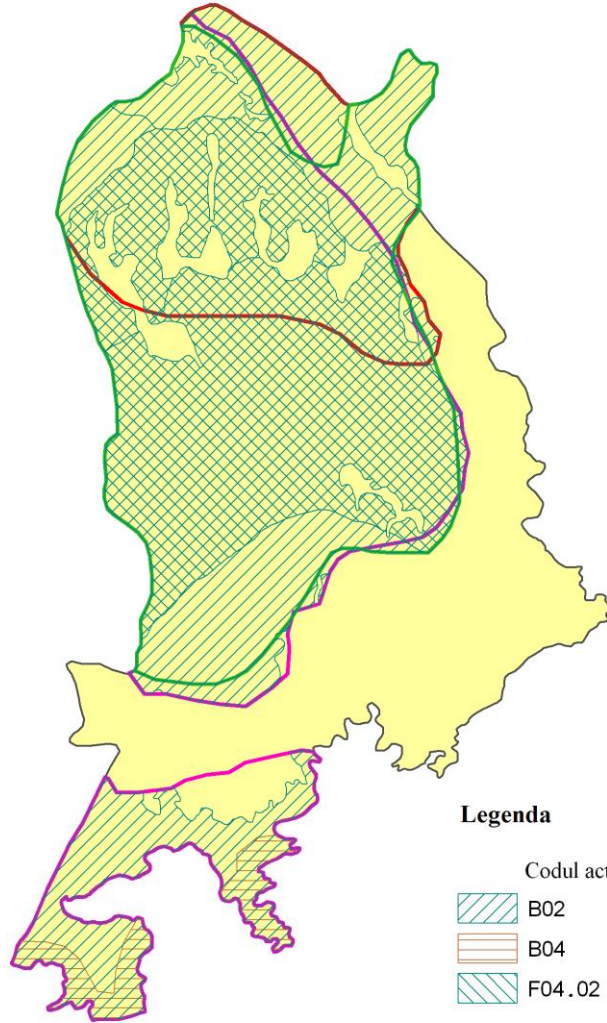
1:10.000



**PRESIUNI ACTUALE ASUPRA SPECIILOR DE ANIMALE**

*Martes martes, Felis silvestris și Capreolus capreolus,*

**LA NIVELUL ARIEI NATURALE PROTEJATE ROSCI0121 MUNTELE VULCAN**




**Legenda**

Codul activității

 B02

 B04

 F04.02

 *Capreolus capreolus*

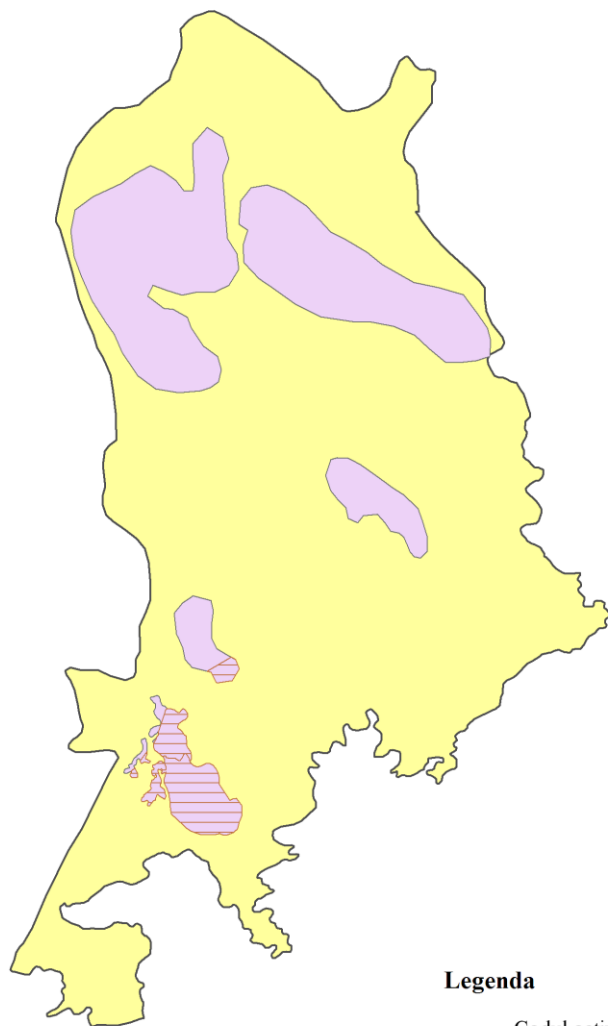
 *Martes martes*

 *Felis silvestris*



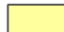
 ROSCI0121 Muntele Vulcan

1:10.000

**PRESIUNI ACTUALE ASUPRA SPECIEI**  
*Falco peregrinus*



**Legenda**

- Codul activității
-  G01.04
-  *Falco peregrinus*
-  ROSCI0121 Muntele Vulcan

1:10.000

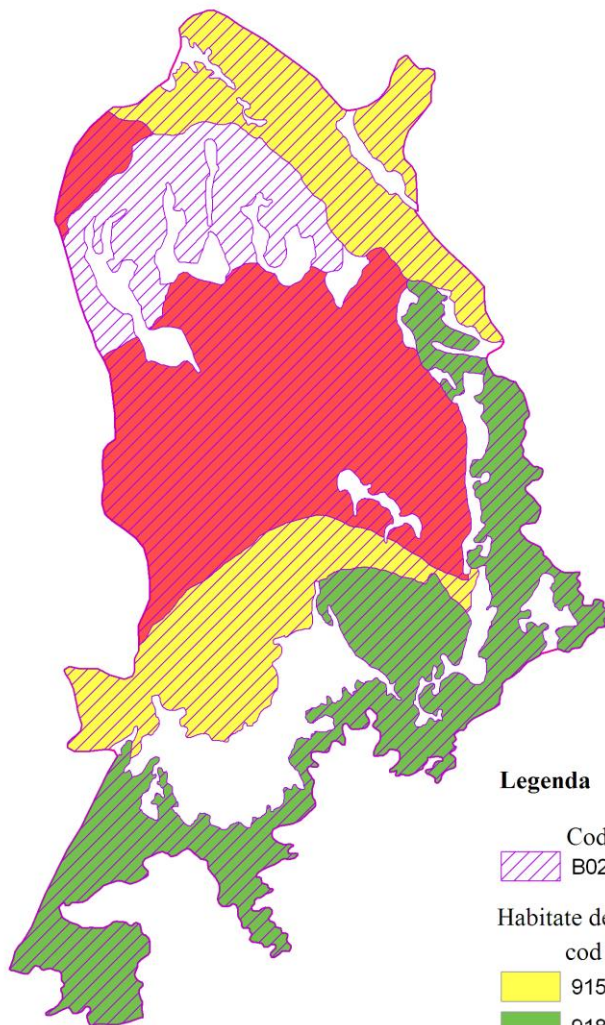


**PRESIUNI ACTUALE ASUPRA HABITATELOR**

9150 Păduri medio-europene de fag din *Cephalanthero-Fagion*

9180\* Păduri sud-est carpatice de frasin - *Fraxinus excelsior*,  
paltin - *Acer pseudoplatanus*, ulm - *Ulmus glabra* cu  
*Lunaria rediviva*

91V0 Păduri sud-est carpatice de fag - *Fagus sylvatica* cu  
brusture negru - *Symphytum cordatum*



**Legenda**

Codul activității  
B02

Habitat de pădure  
cod Natura 2000

9150

9180\*

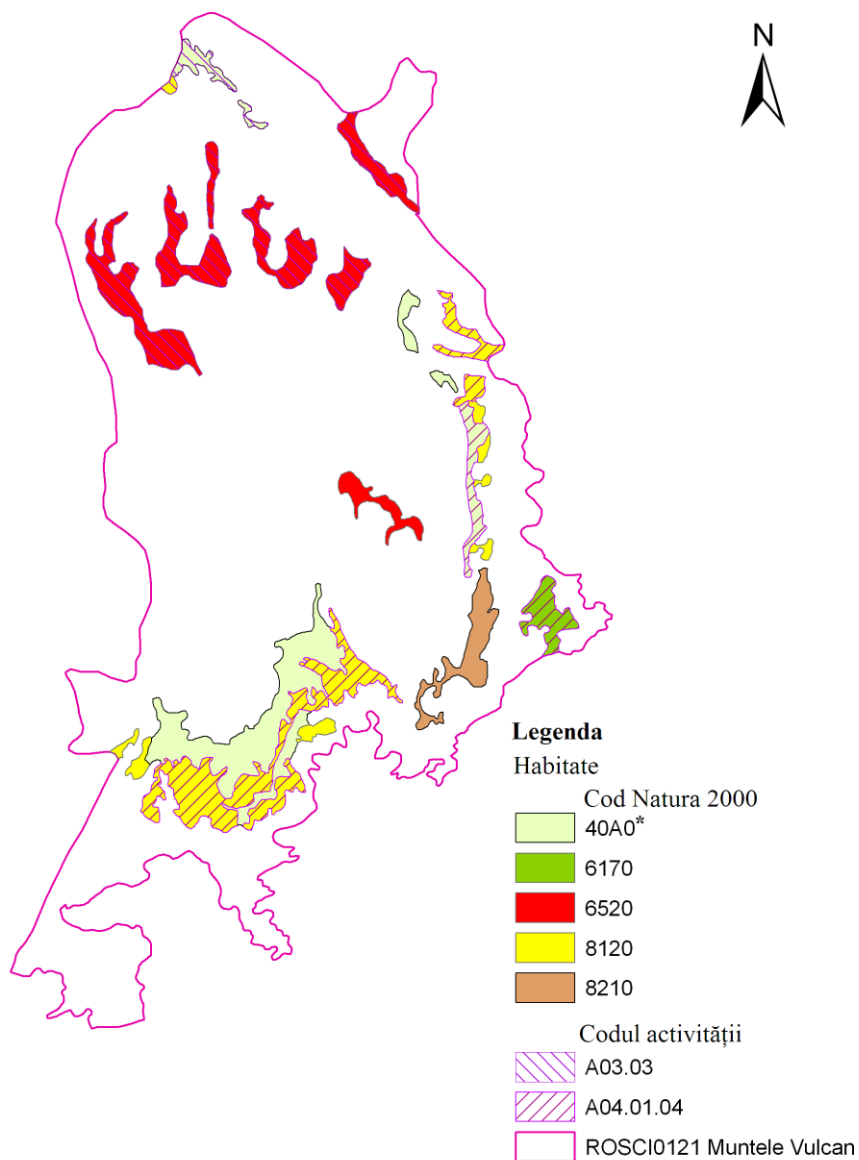
91V0

ROSCI0121 Muntele Vulcan

1:10.000

**PRESIUNI ACTUALE ASUPRA HABITATELOR**

- 40A0\* Tufărișuri continentale peripanonice, varianta cu *Sorbus dacica* și cu *Spiraea ulmifolia*
- 6170 Pajiști calcaroase alpine și subalpine
- 6520 Fânețe montane
- 8120 Grohotișuri calcaroase din etajul montan până în cel alpin
- 8210 Versanți stâncoși cu vegetație chasmofitică pe roci calcaroase

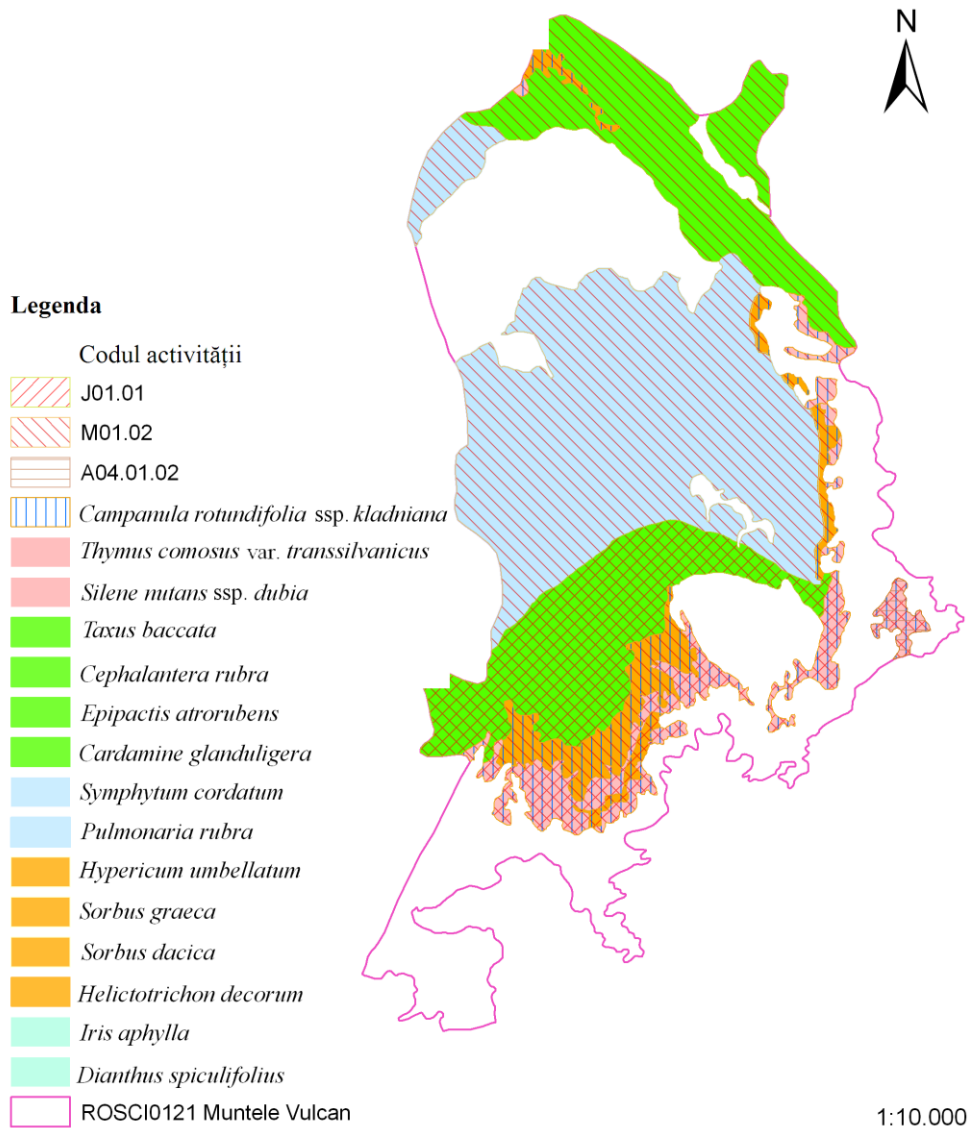




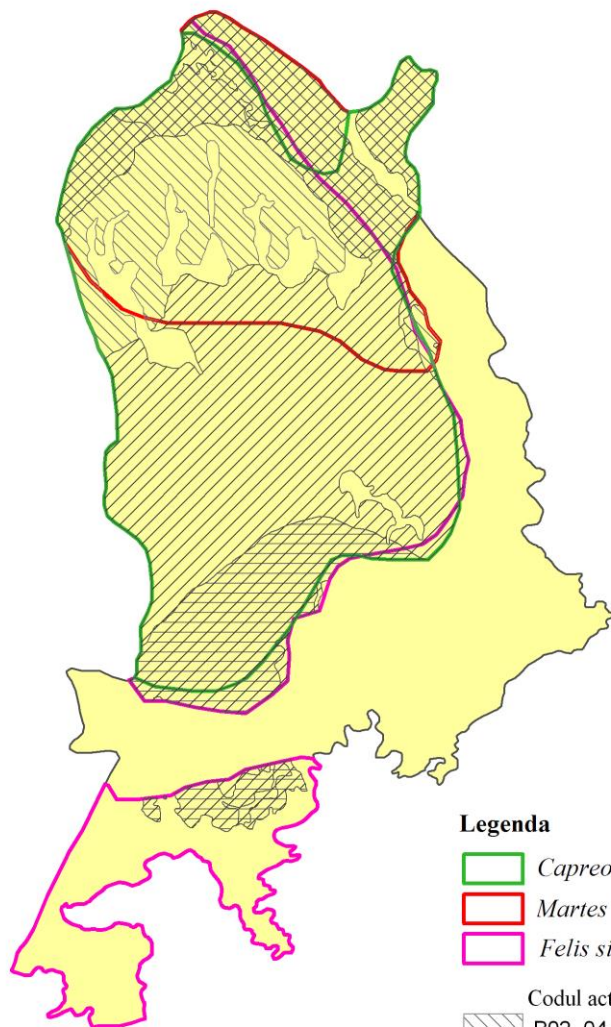
**AMENINȚĂRI VIITOARE ASUPRA SPECIILOR DE PLANTE**

*Helictotrichon decorum, Sorbus dacica, Sorbus graeca, Iris aphylla, Symphytum cordatum, Thymus comosus var. transsilvanicus, Dianthus spiculifolius, Hypericum umbellatum, Cephalantera rubra, Epipactis atrorubens, Pulmonaria rubra, Taxus baccata, Cardamine glanduligera, Silene nutans ssp. dubia, Campanula rotundifolia ssp. kladniana,*


**LA NIVELUL ARIEI NATURALE PROTEJATE ROSCI0121 MUNTELE VULCAN**



**AMENINȚĂRI VIITOARE ASUPRA SPECIILOR DE ANIMALE**  
*Martes martes, Felis silvestris și Capreolus capreolus,*  
**LA NIVELUL ARIEI NATURALE PROTEJATE ROSCI0121 MUNTELE VULCAN**



**Legenda**

 *Capreolus capreolus*

 *Martes martes*


 *Felis silvestris*

Codul activității

 B02 . 04

 J01 . 01

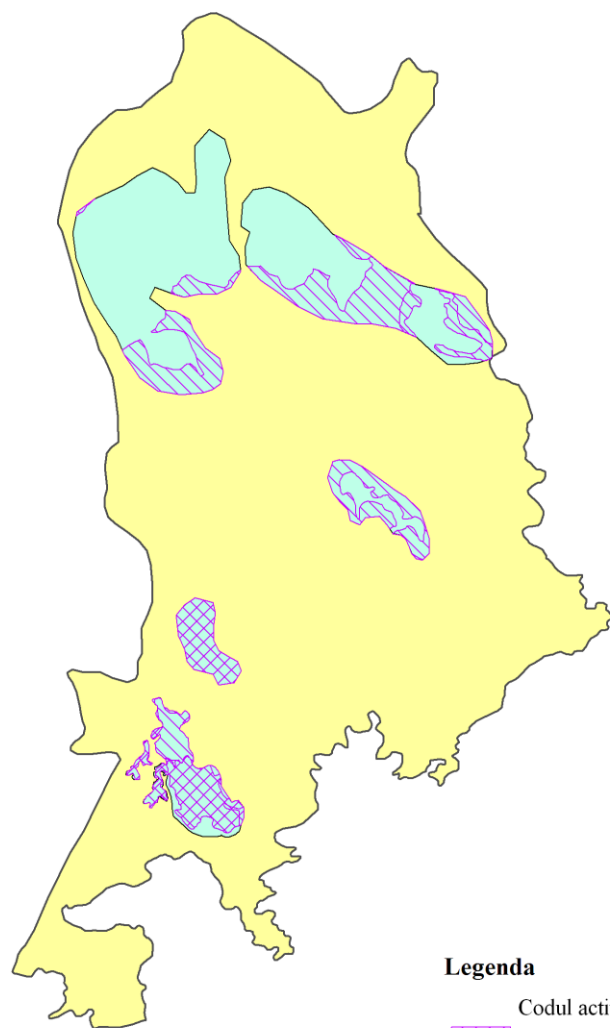
 M01 . 02

 ROSCI0121 Muntele Vulcan

1:10.000



**AMENINȚĂRI VIITOARE ASUPRA SPECIEI**  
*Falco peregrinus*  
**LA NIVELUL ARIEI NATURALE PROTEJATE ROSCI0121 MUNTELE VULCAN**



**Legenda**

Codul activității

J01.01

M01.02

*Falco peregrinus*

ROSCI0121 Muntele Vulcan

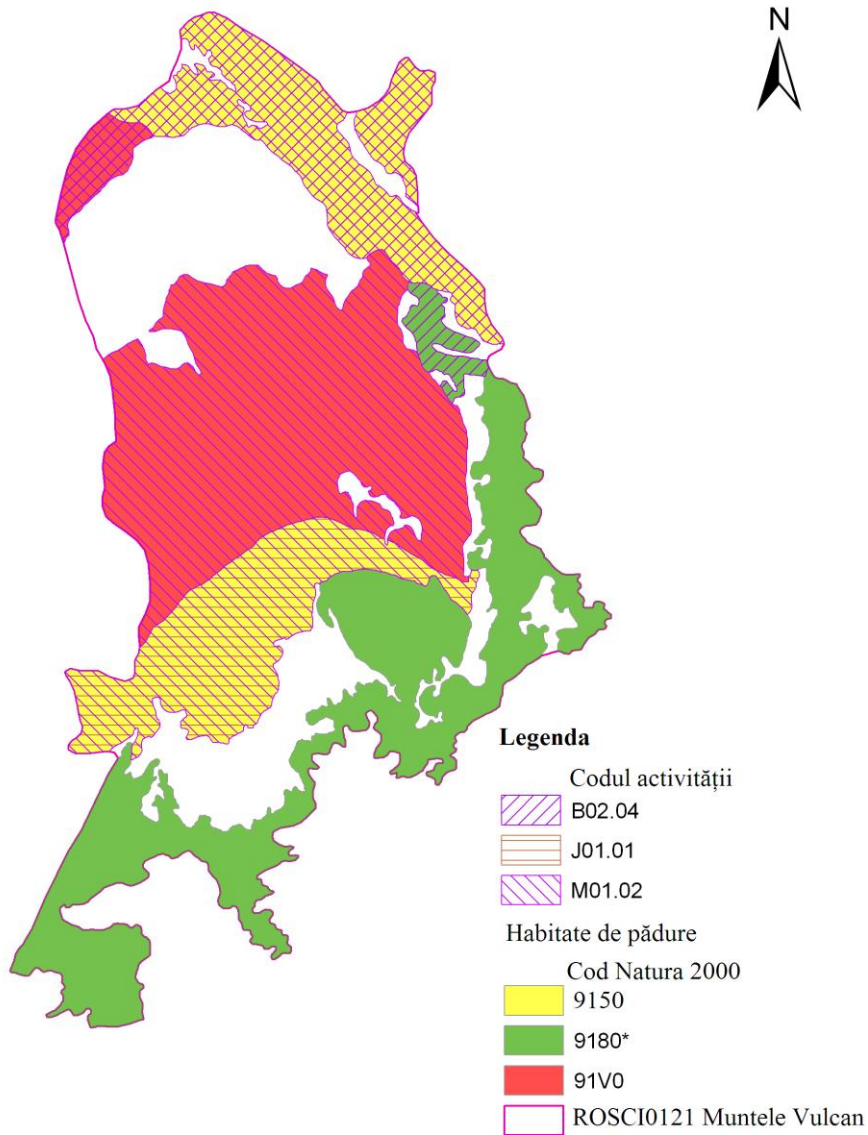
1:10.000

**AMENINȚĂRI VIITOARE ASUPRA HABITATELOR**

9150 Păduri medio-europene de fag din *Cephalanthero-Fagion*

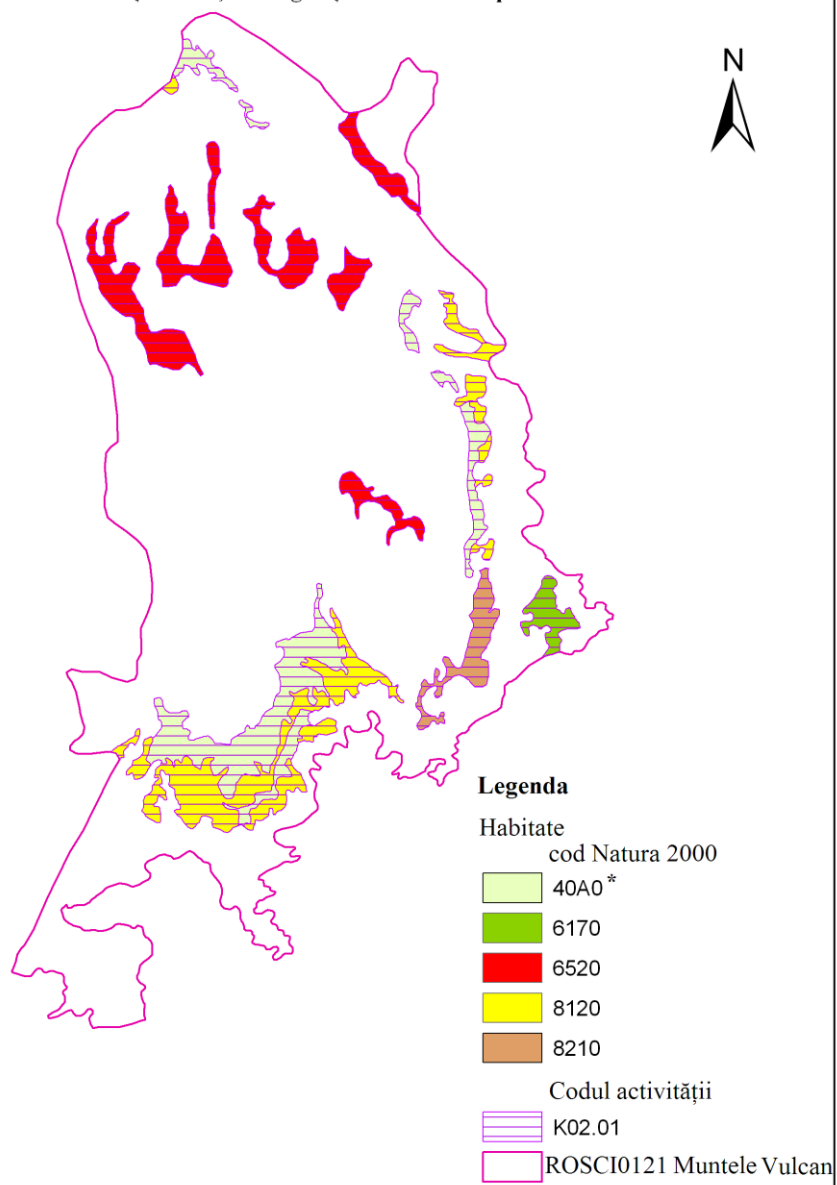
9180\* Păduri sud-est carpatice de frasin - *Fraxinus excelsior*,  
paltin - *Acer pseudoplatanus*, ulm - *Ulmus glabra* cu  
*Lunaria rediviva*

91V0 Păduri sud-est carpatice de fag - *Fagus sylvatica* cu  
brusture negru - *Symphytum cordatum*



**AMENINȚĂRI VIITOARE ASUPRA HABITATELOR**

- 40A0\* Tufărișuri continentale peripanonice, varianta cu *Sorbus dacica* și cu *Spiraea ulmifolia*
- 6170 Pajiști calcaroase alpine și subalpine
- 6520 Fânețe montane
- 8120 Grohotișuri calcaroase din etajul montan până în cel alpin
- 8210 Versanți stâncoși cu vegetație chasmofitică pe roci calcaroase



1:10.000












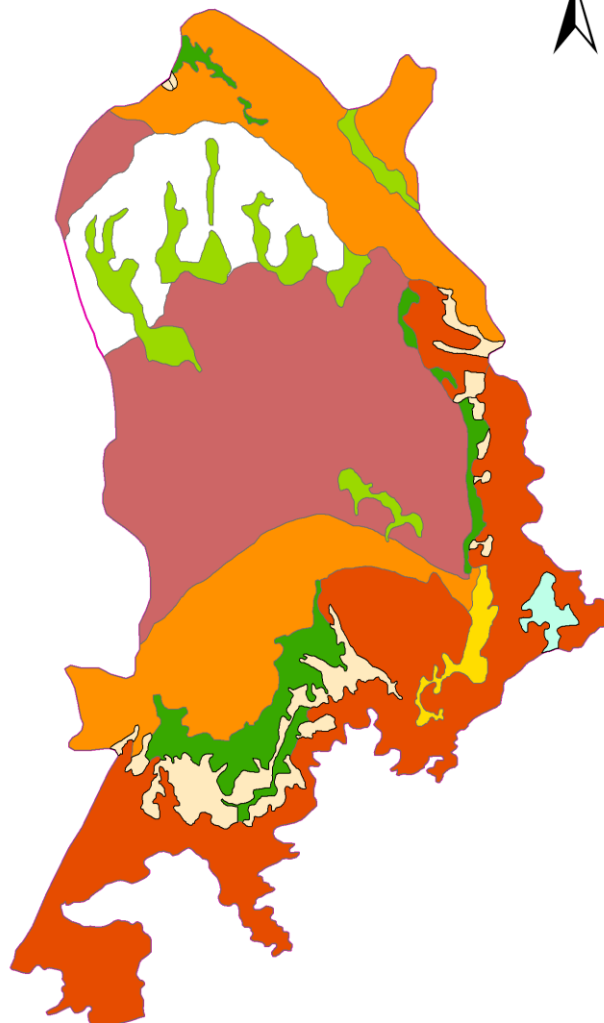
**DISTRIBUȚIA HABITATELOR DE INTERES COMUNITAR**



**Legenda**

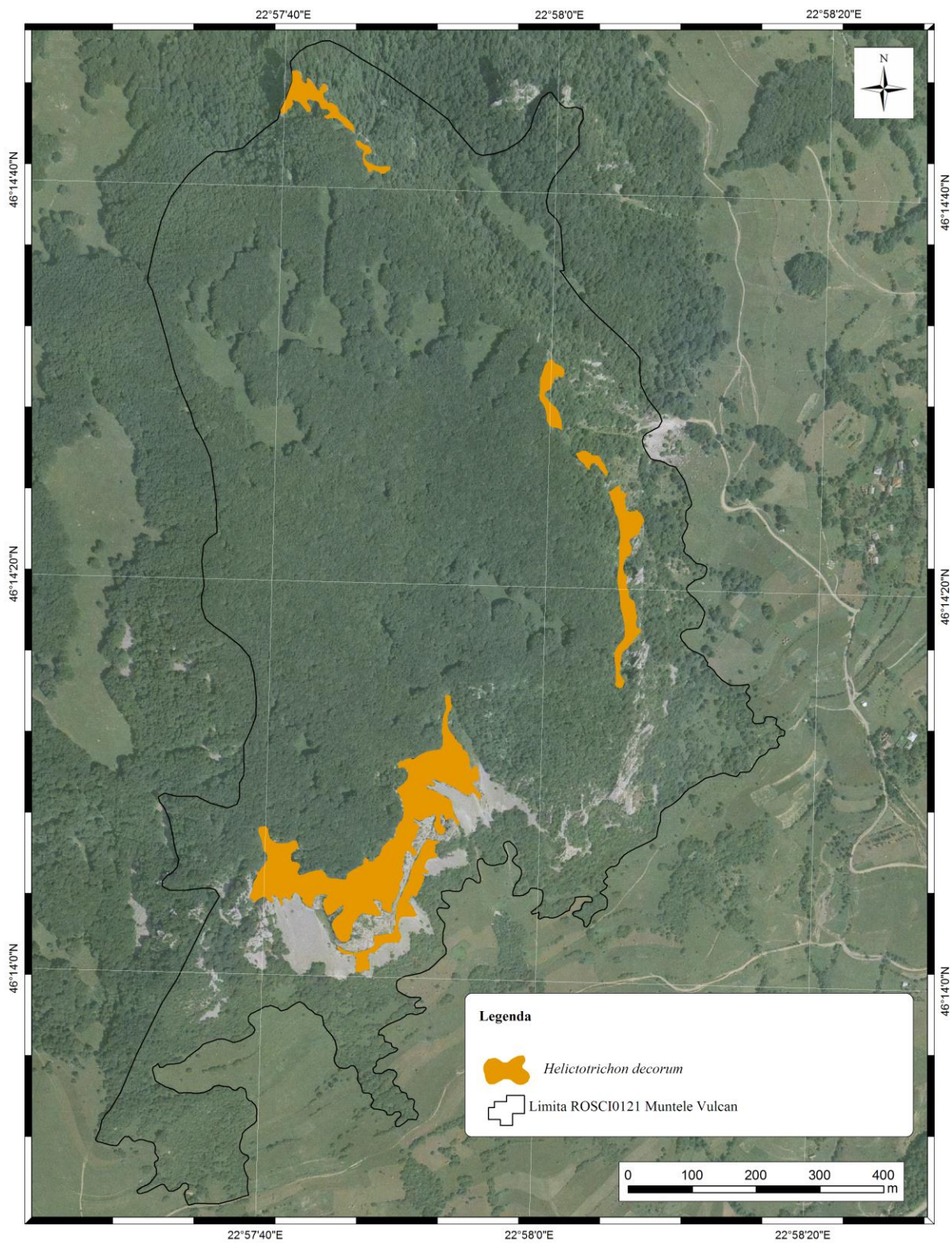
Habitat  
cod Natura 2000

-  40A0\*
-  6170
-  6520
-  8120
-  8210
-  9150
-  9180\*
-  91V0
-  ROSCI0121 Muntele Vulcan



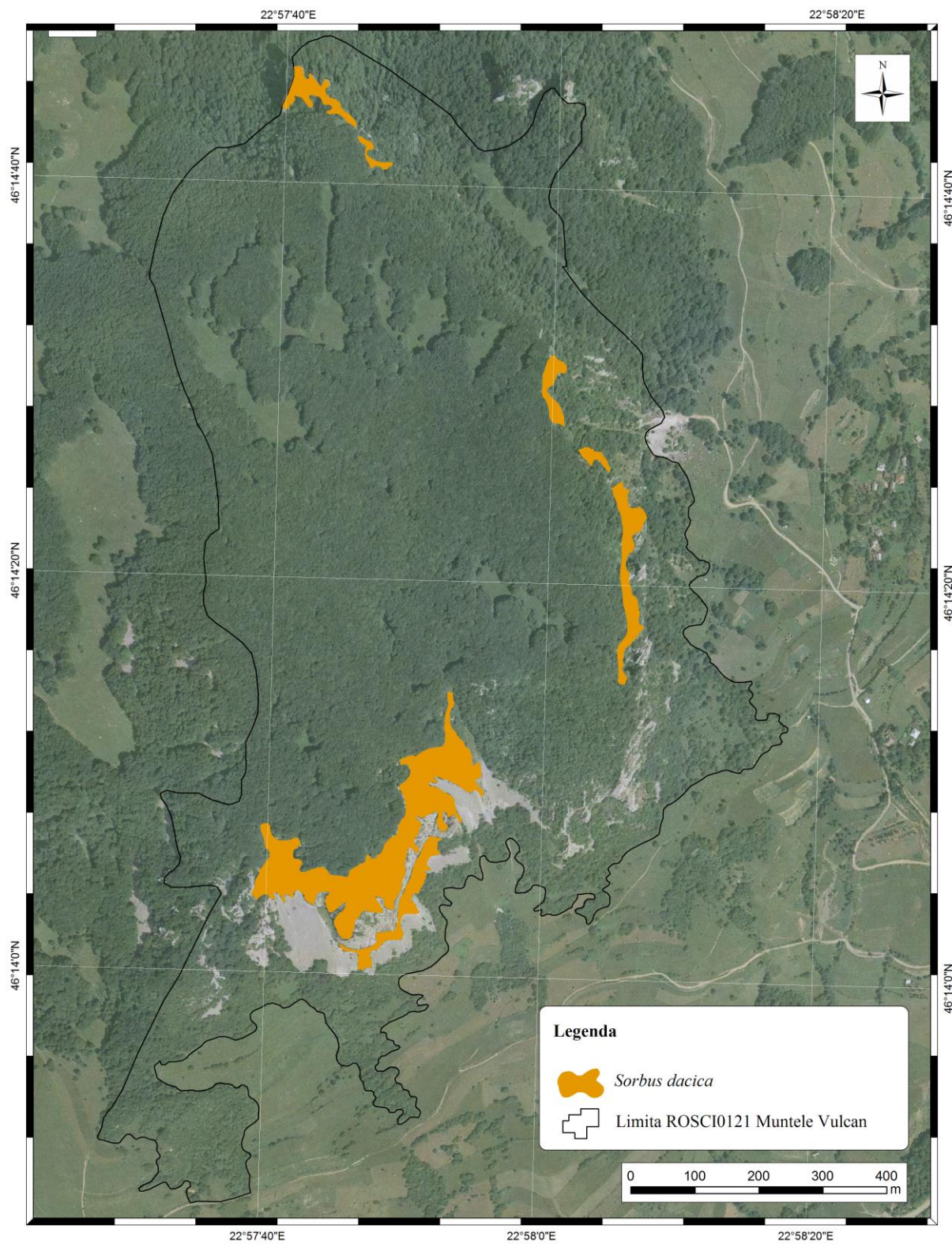
1:10.000

**DISTRIBUȚIA SPECIEI *Helictotrichon decorum***



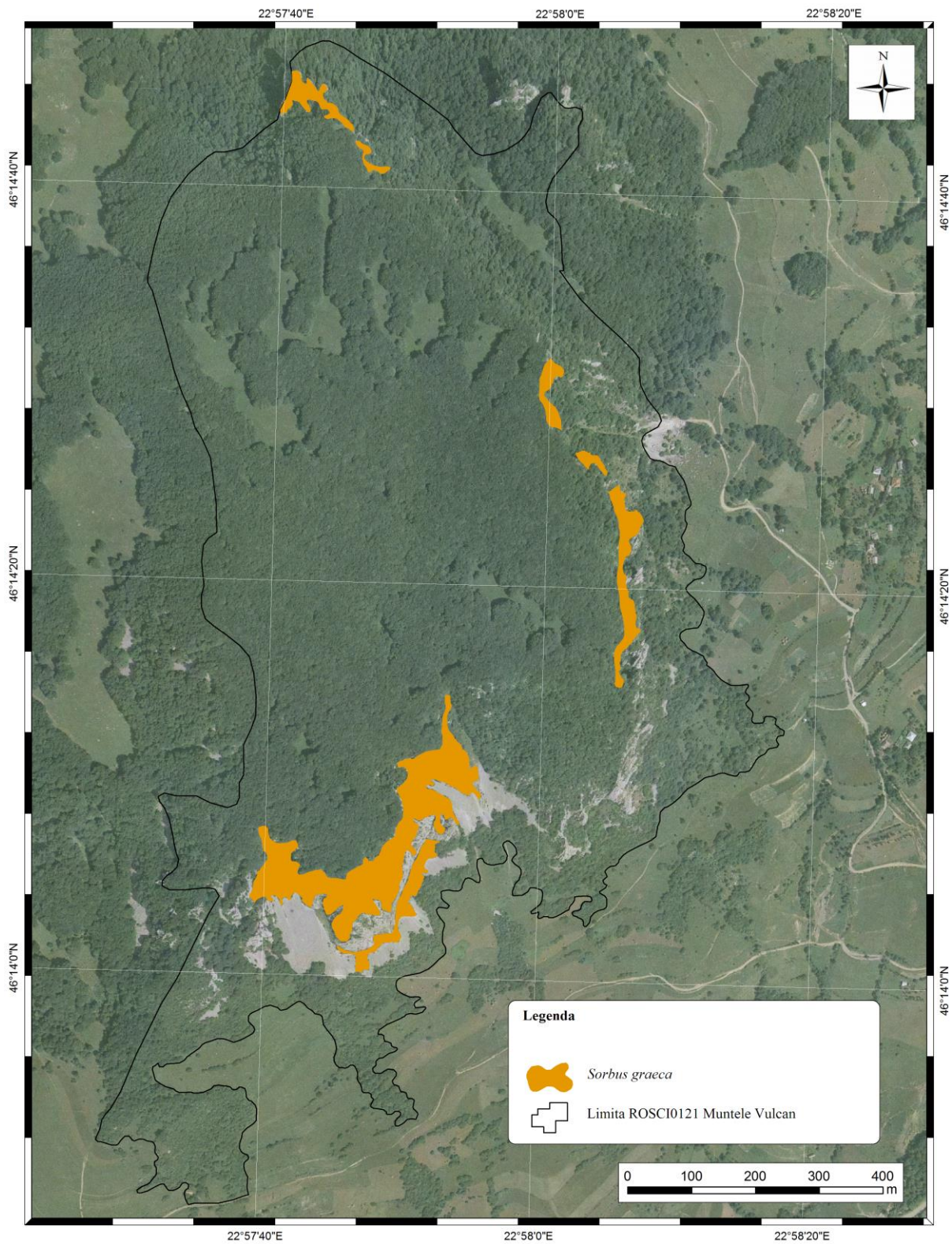


**DISTRIBUȚIA SPECIEI *Sorbus dacica***



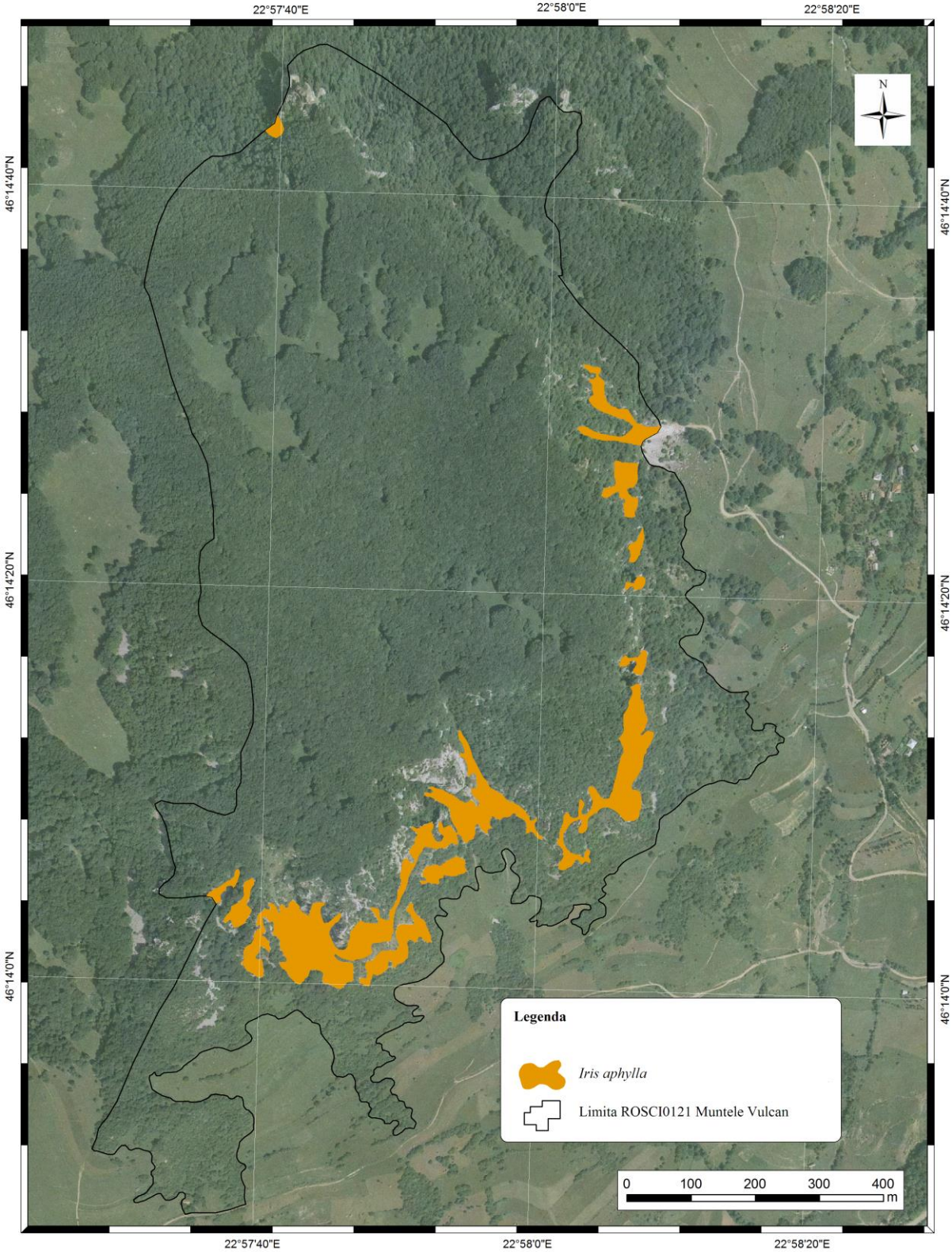


**DISTRIBUȚIA SPECIEI *Sorbus graeca***





**DISTRIBUȚIA SPECIEI *Iris aphylla***



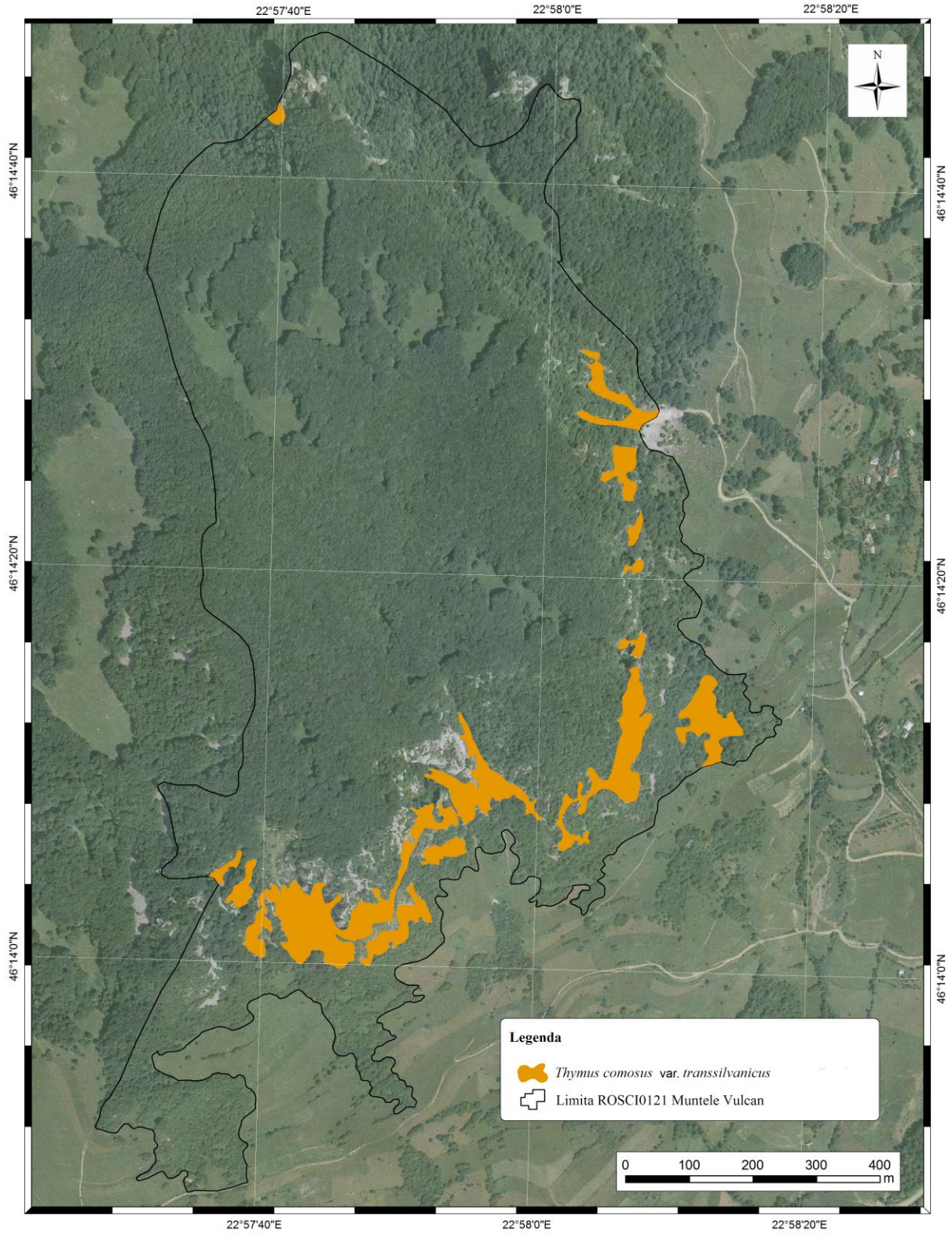


**DISTRIBUȚIA SPECIEI *Symphytum cordatum***



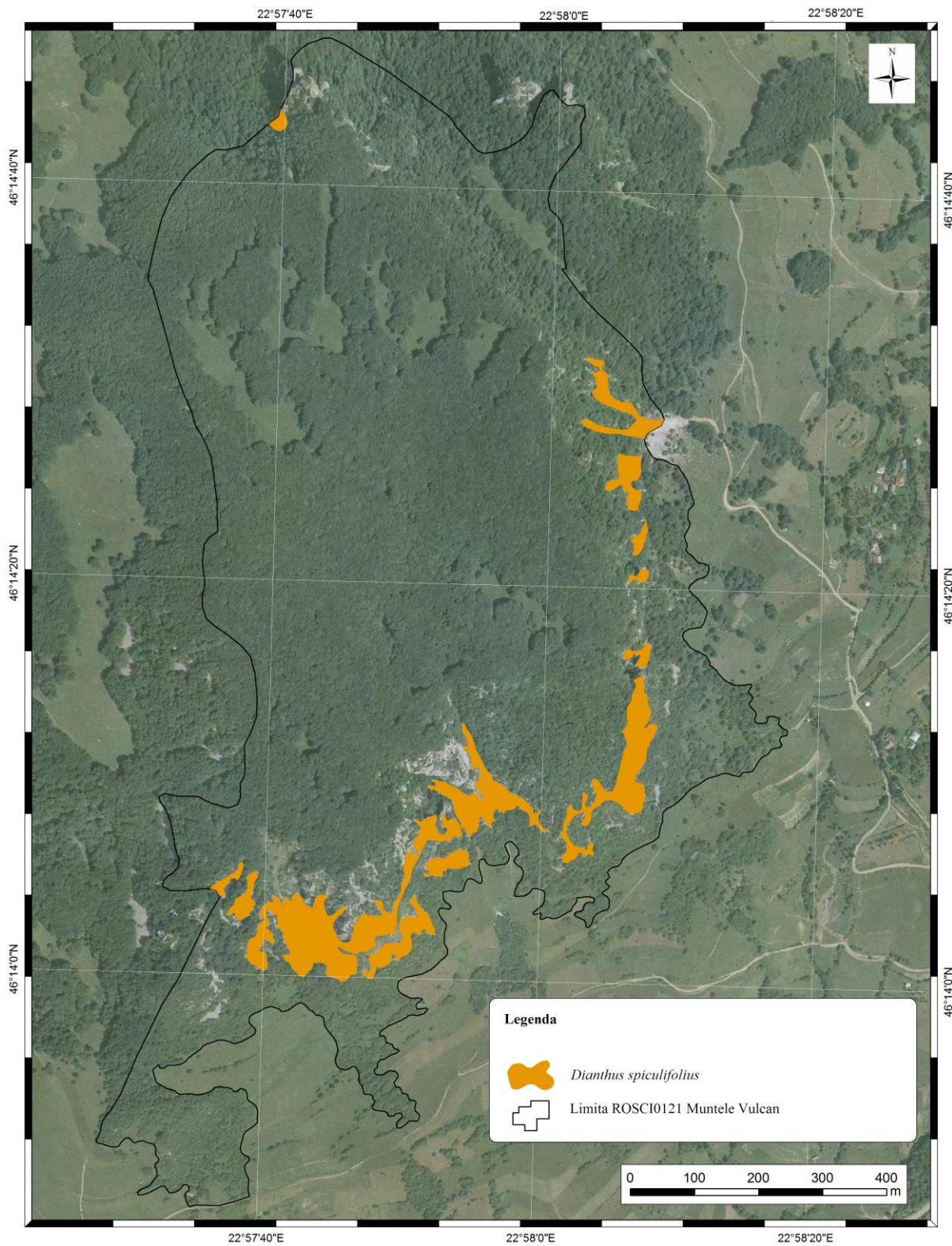


DISTRIBUȚIA SPECIEI *Thymus comosus* var. *transsilvanicus*



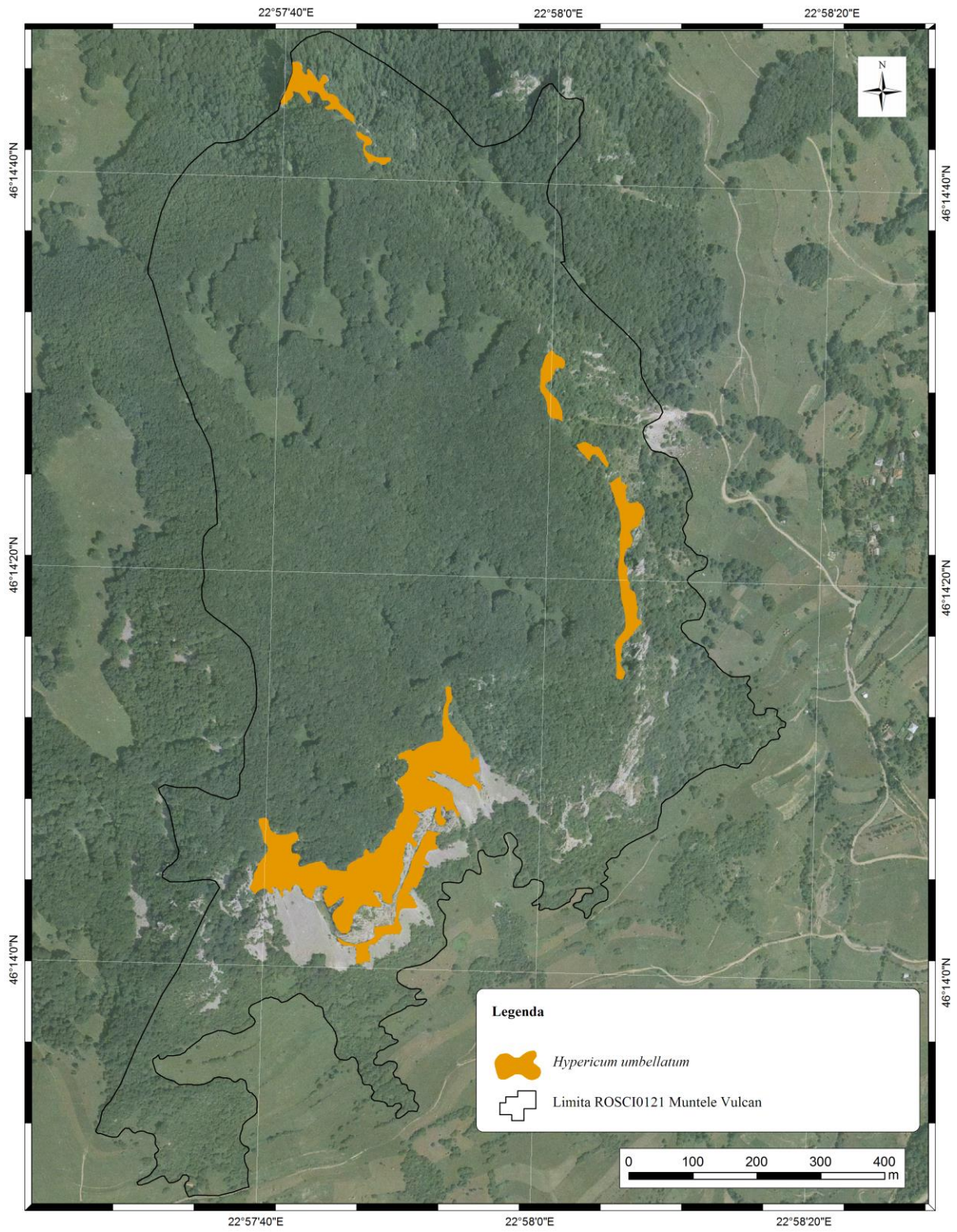


**DISTRIBUȚIA SPECIEI *Dianthus spiculifolius***



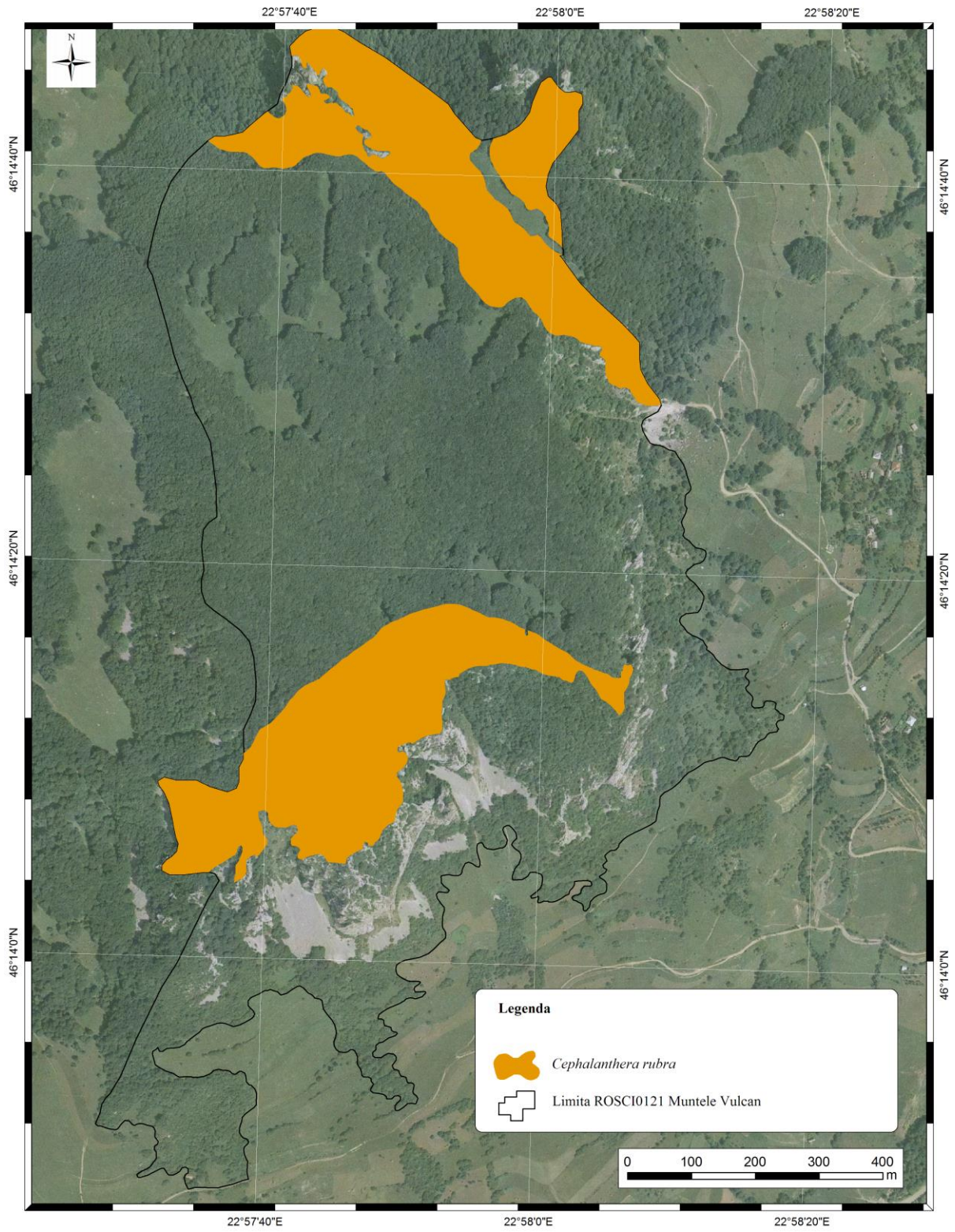


**DISTRIBUȚIA SPECIEI *Hypericum umbellatum***





**DISTRIBUȚIA SPECIEI *Cephalanthera rubra***



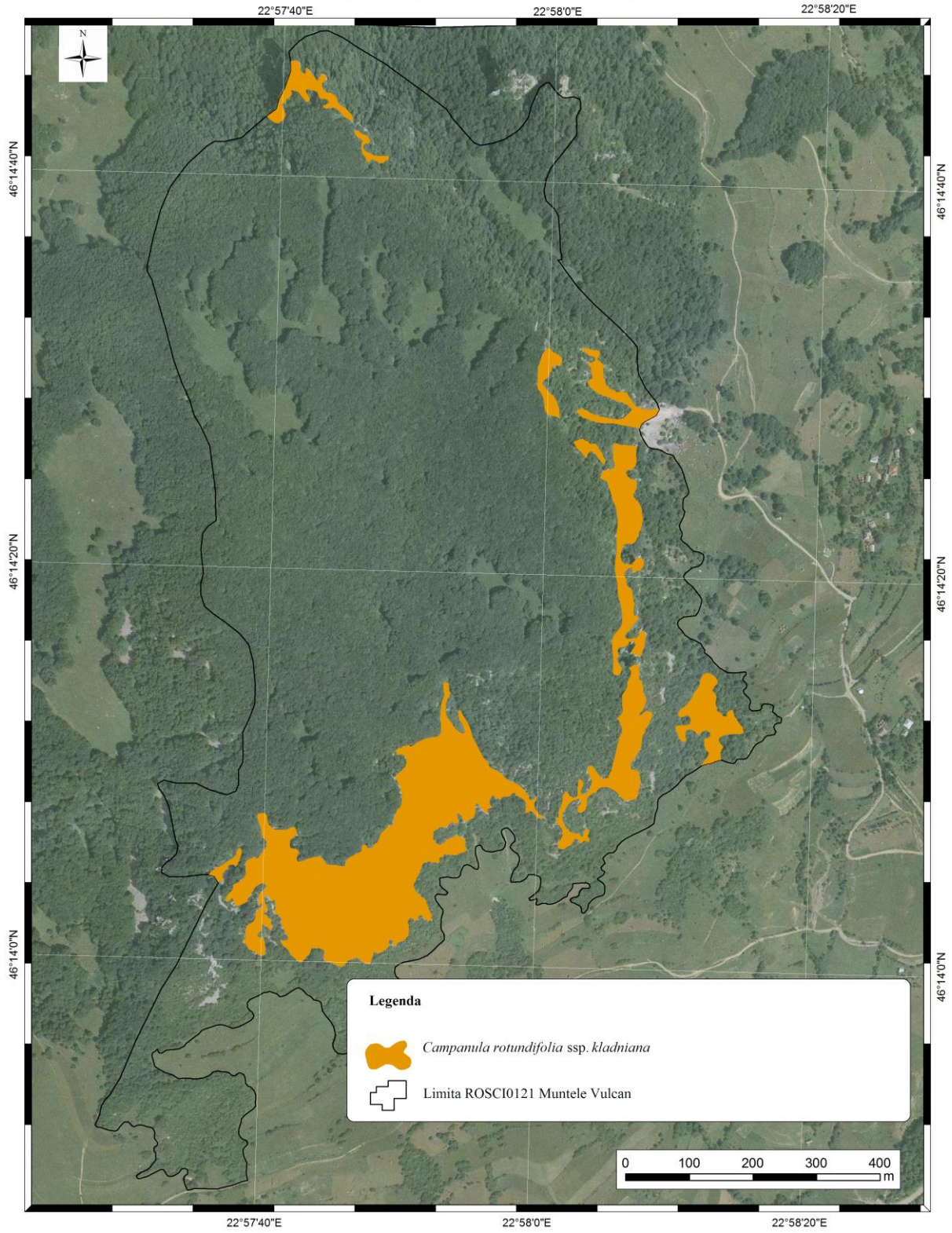


DISTRIBUȚIA SPECIEI *Taxus baccata*



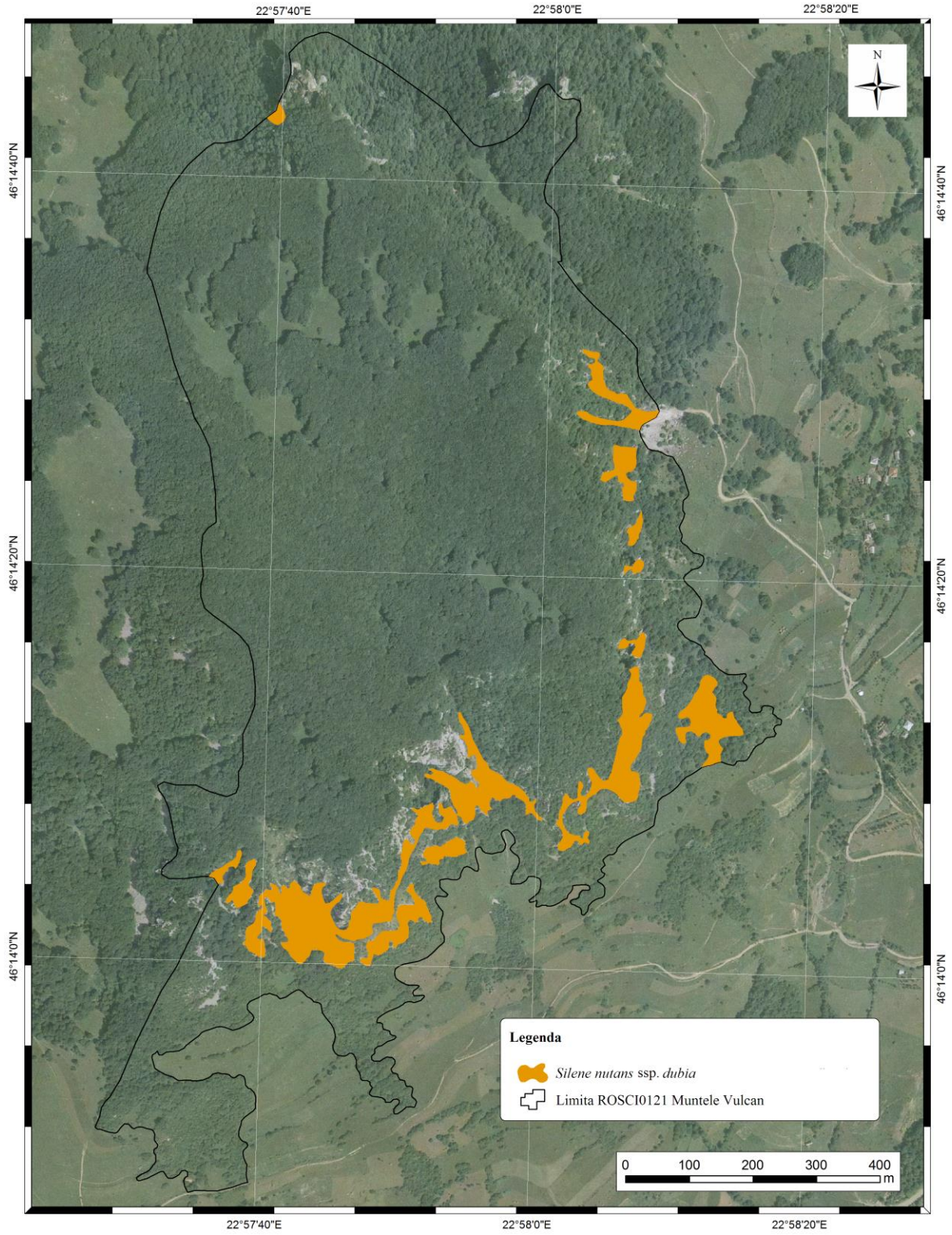


**DISTRIBUȚIA SPECIEI *Campanula rotundifolia* ssp. *kladniana***





**DISTRIBUȚIA SPECIEI *Silene nutans* ssp. *dubia***





**DISTRIBUȚIA SPECIEI *Epipactis atrorubens***



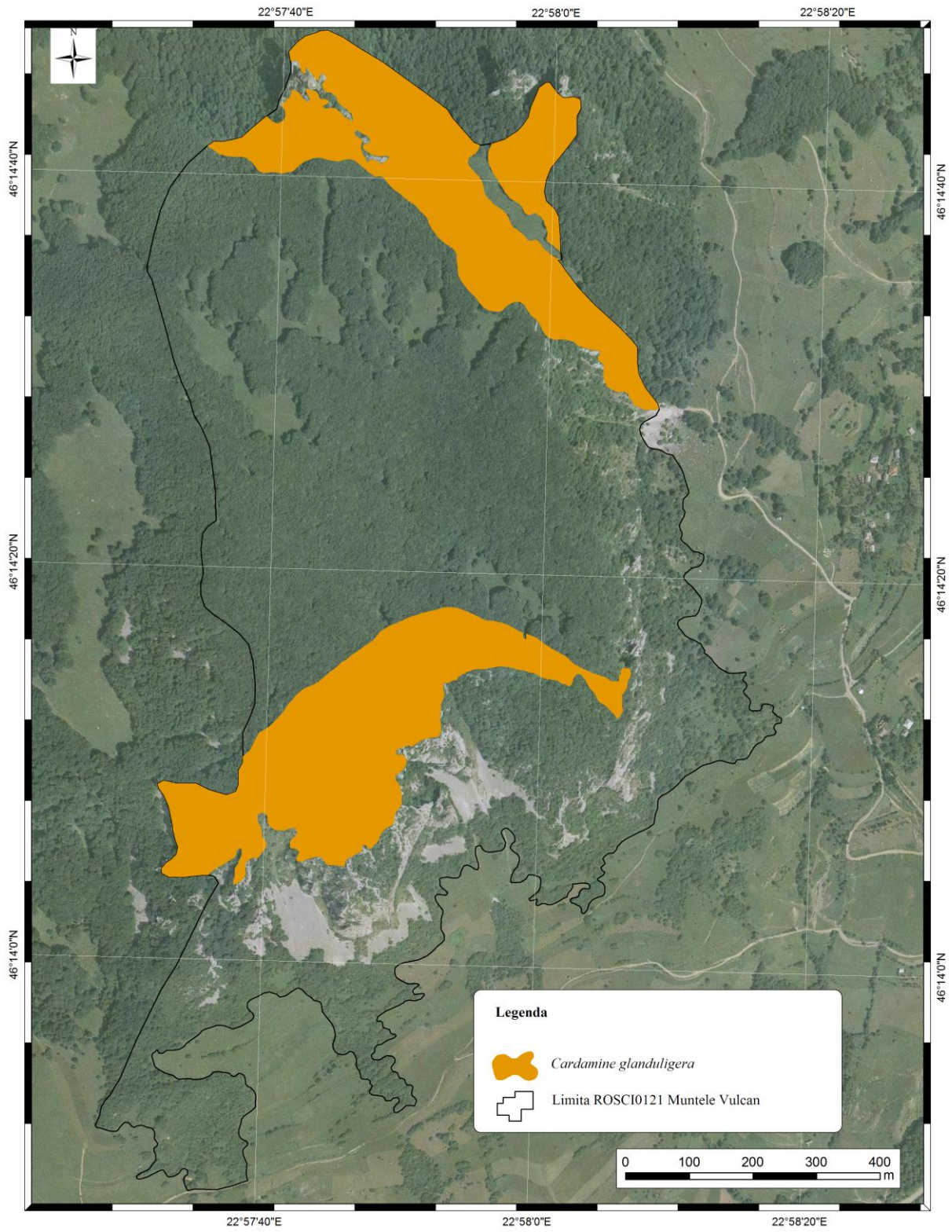


**DISTRIBUȚIA SPECIEI *Pulmonaria rubra***



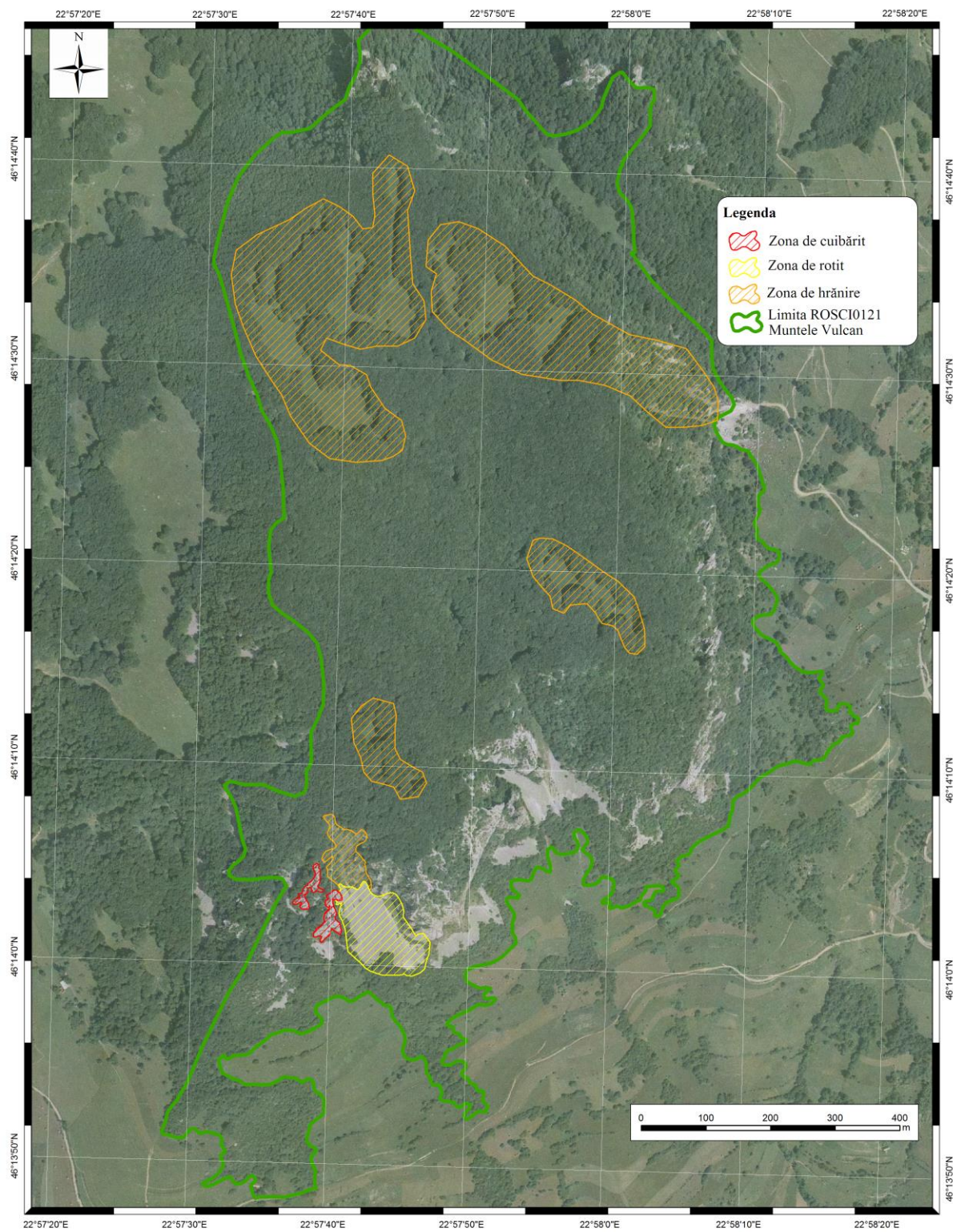


**DISTRIBUȚIA SPECIEI *Cardamine glanduligera***





**DISTRIBUȚIA SPECIEI *Falco peregrinus***



## DISTRIBUȚIA SPECIILOR DE ANIMALE

*Martes martes*, *Felis silvestris*, *Capreolus capreolus*

