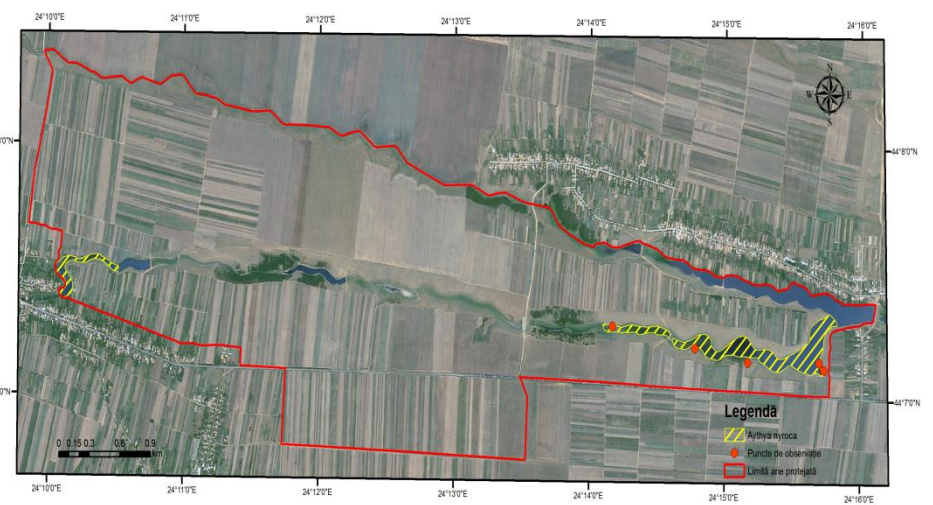
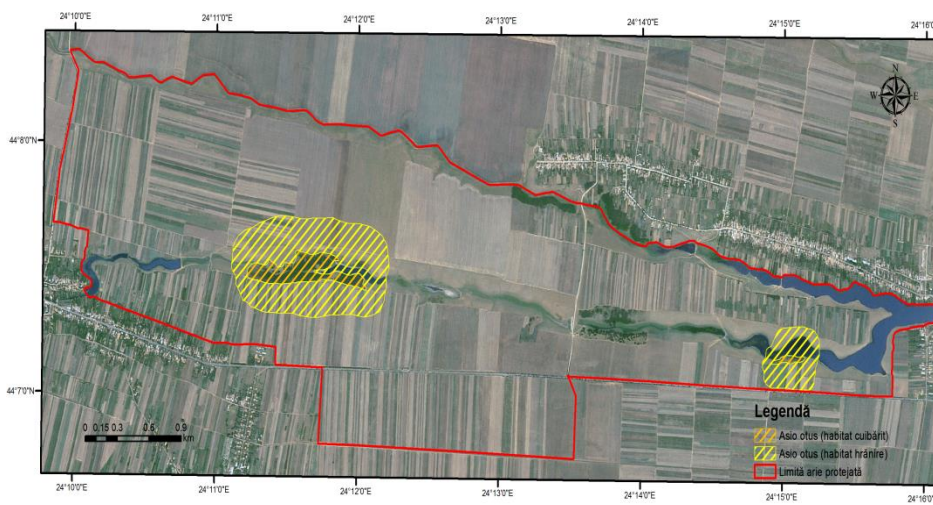
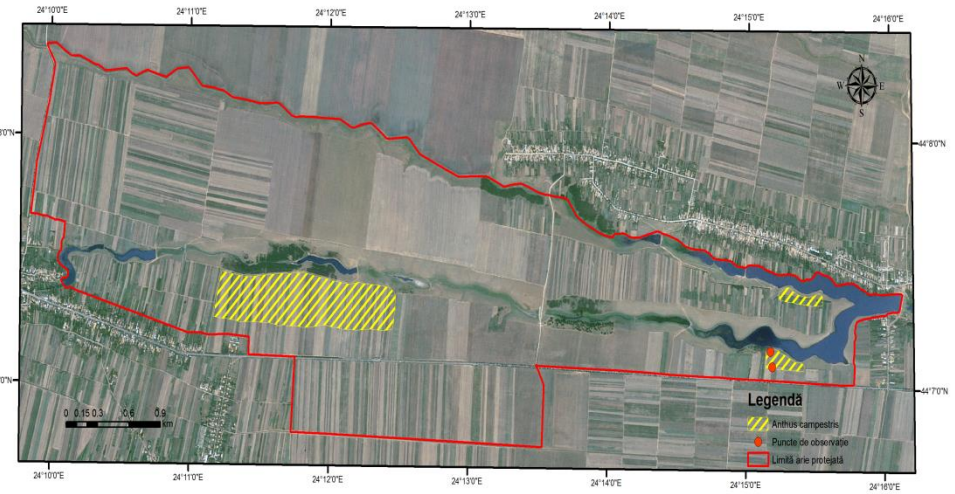
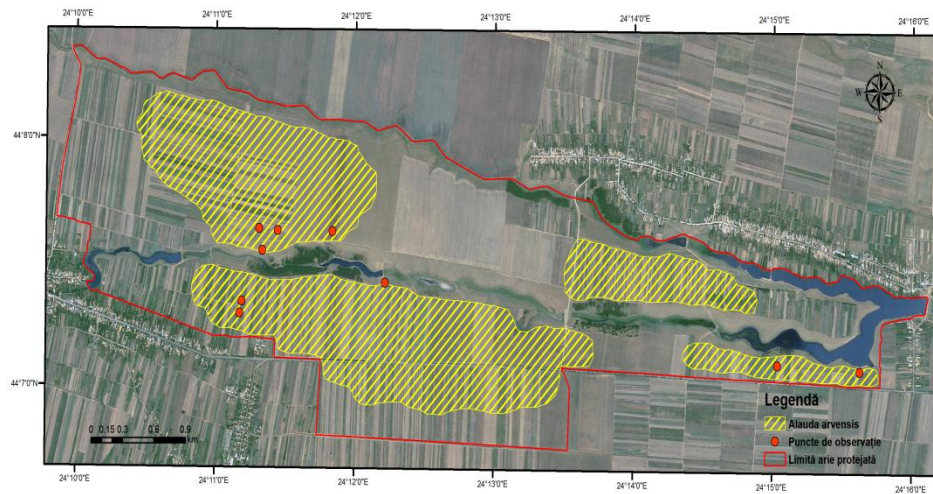
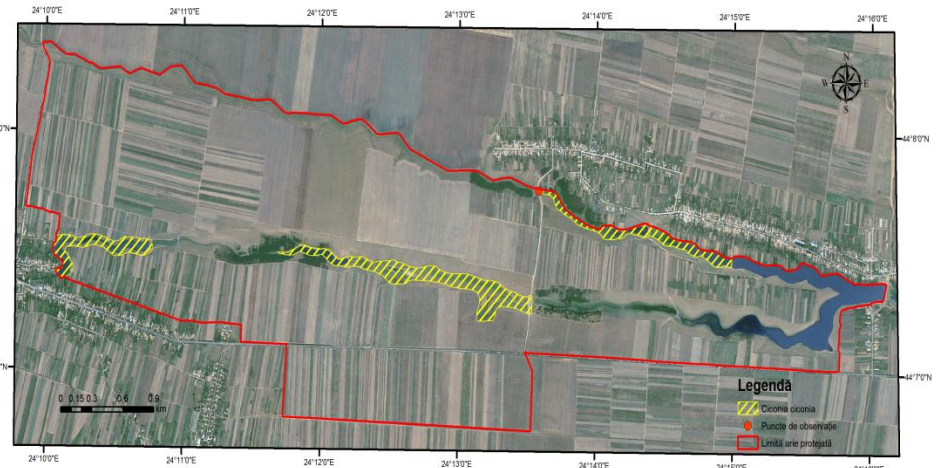
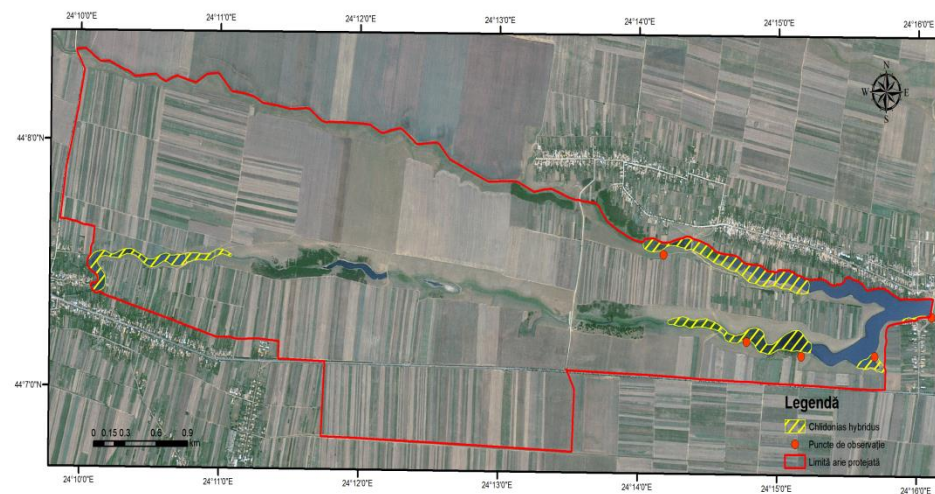
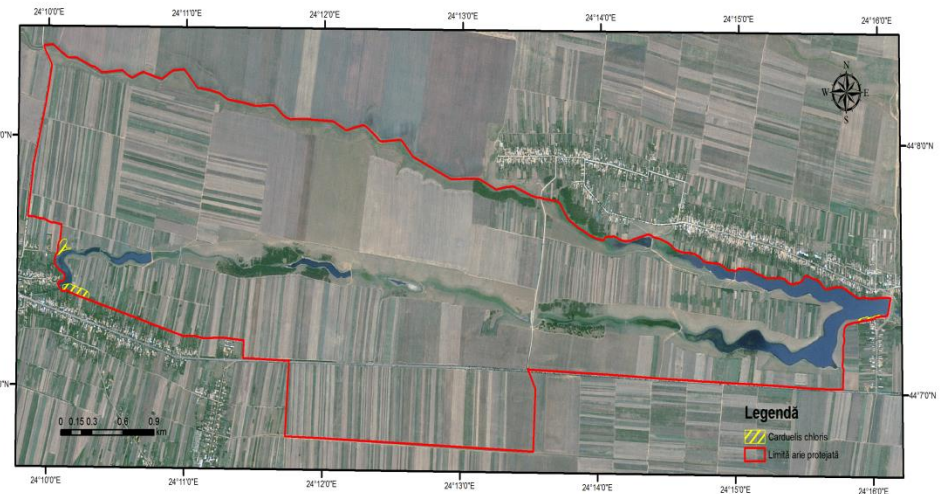
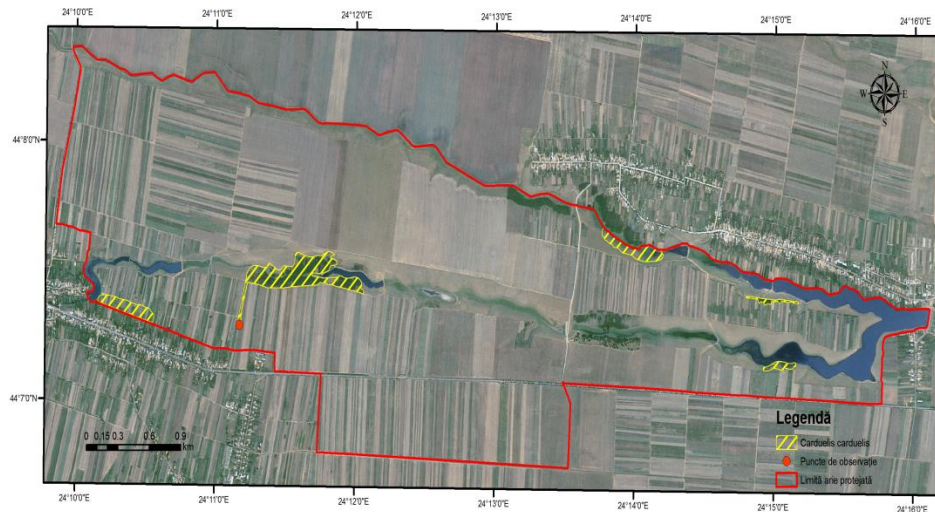


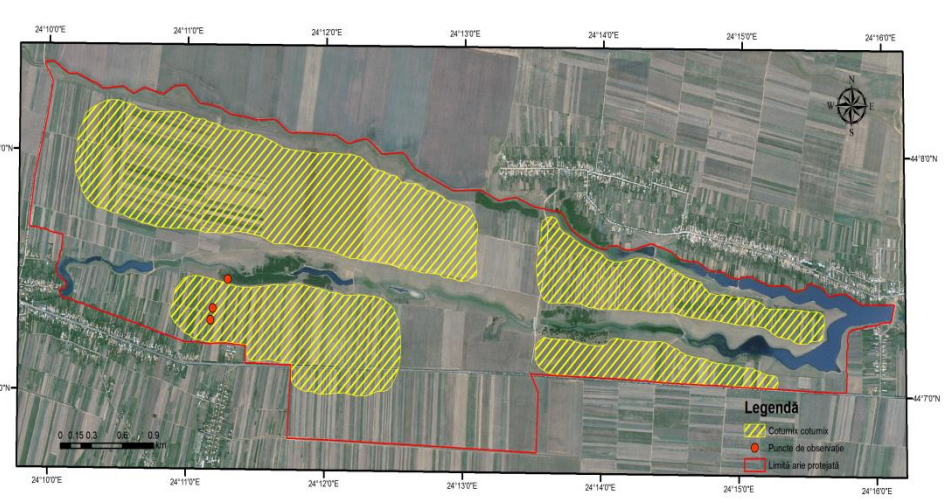
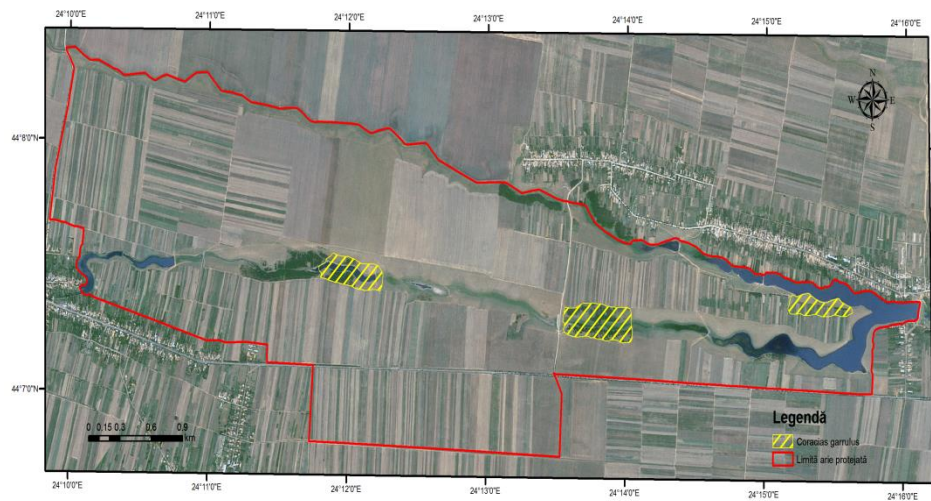
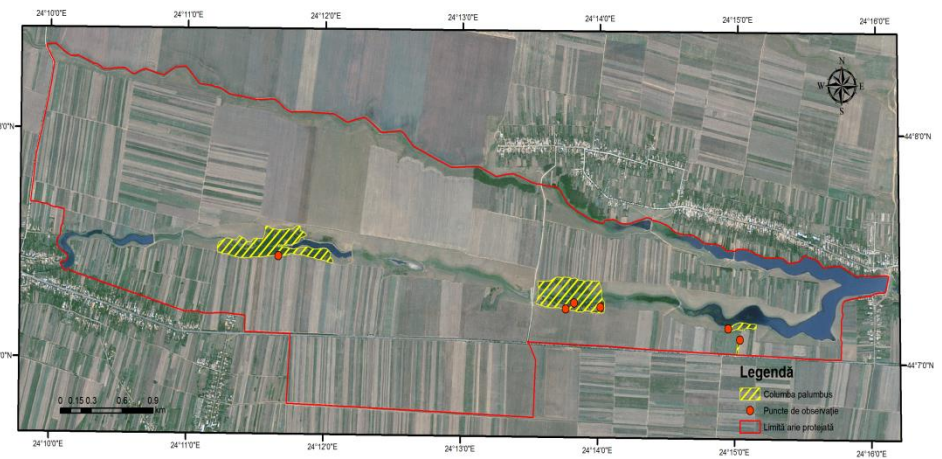
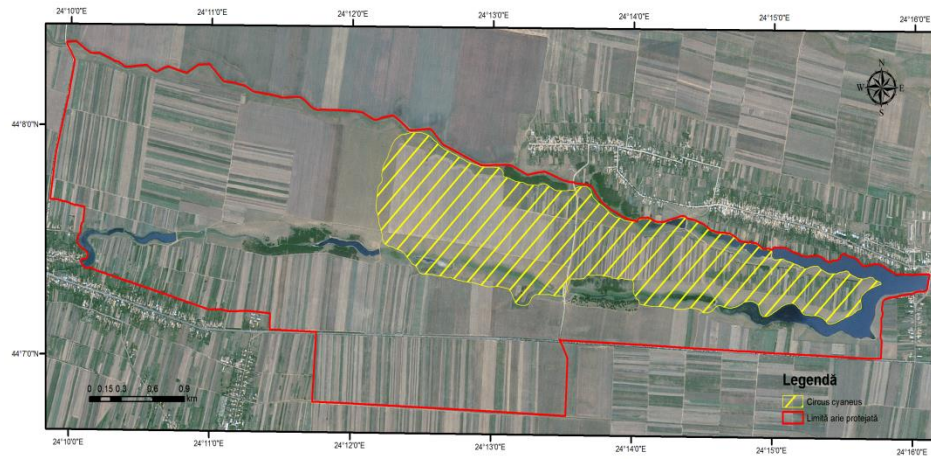
Hărțile distribuției speciilor *Alauda arvensis* (stânga sus), *Anthus campestris* (dreapta sus), *Asio otus* (stânga jos) și *Aythya nyroca* (dreapta jos)



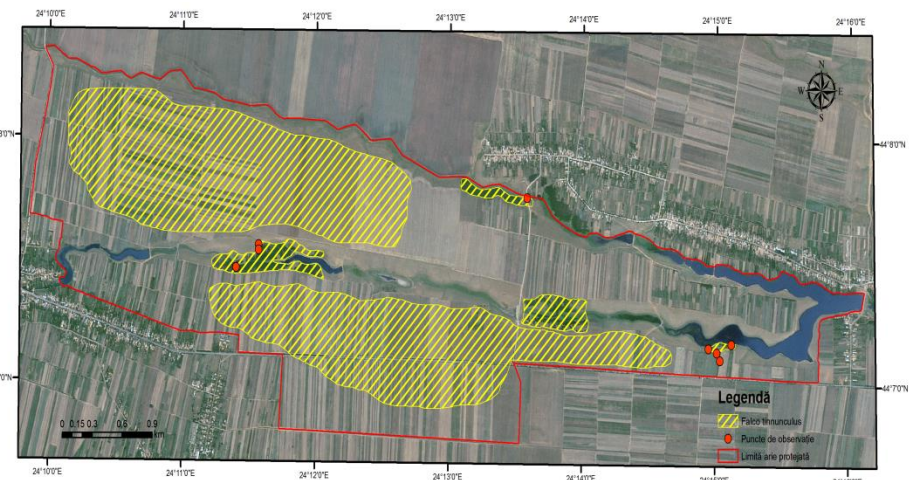
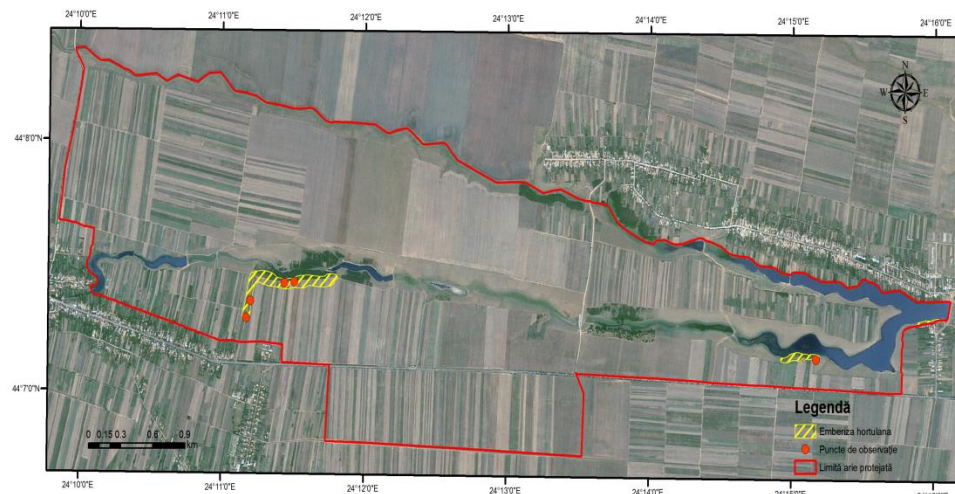
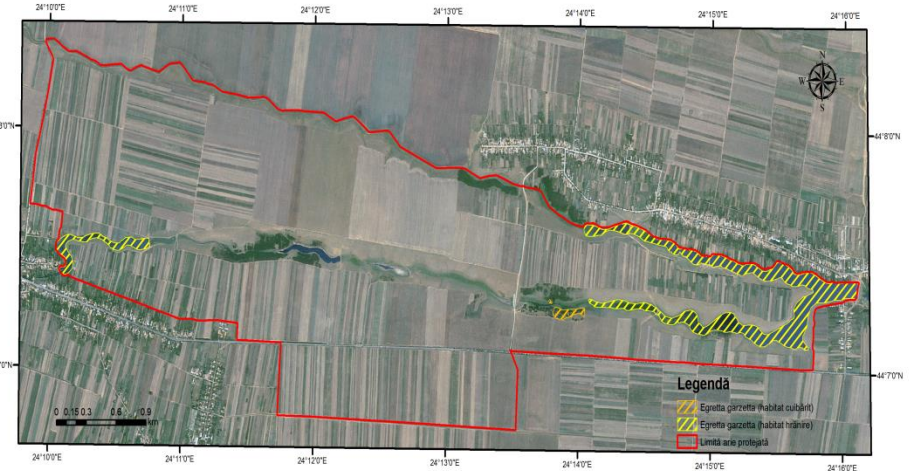
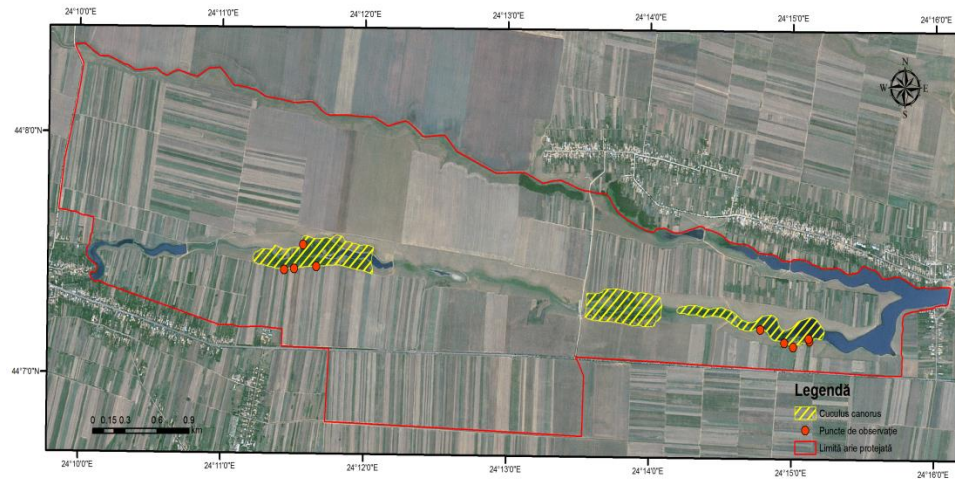
Hărțile distribuției speciilor *Carduelis carduelis* (stânga sus), *Carduelis chloris* (dreapta sus), *Chlidonias hybridus* (stânga jos) și *Ciconia Ciconia* (dreapta jos)



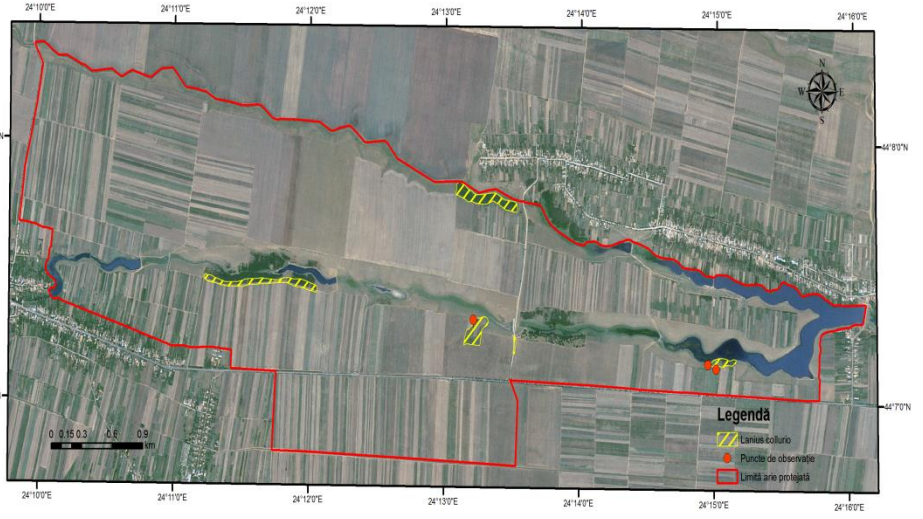
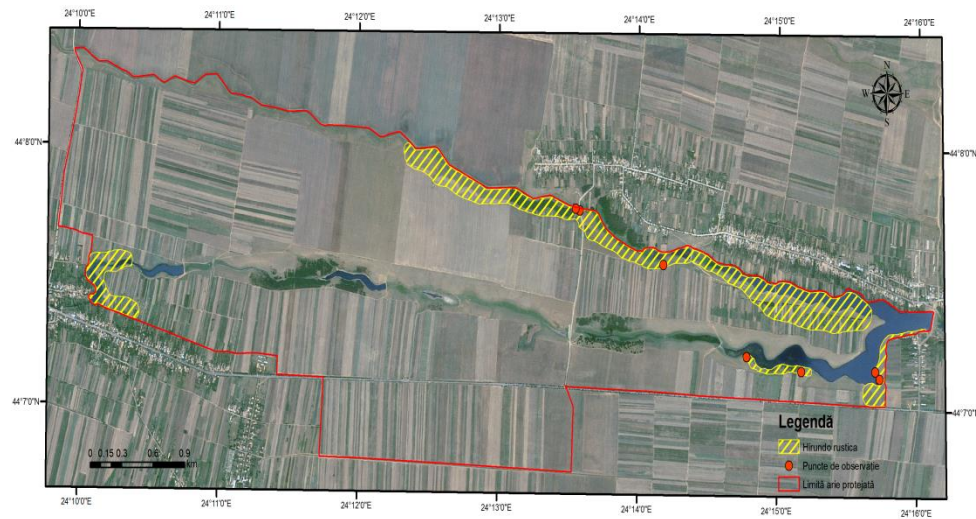
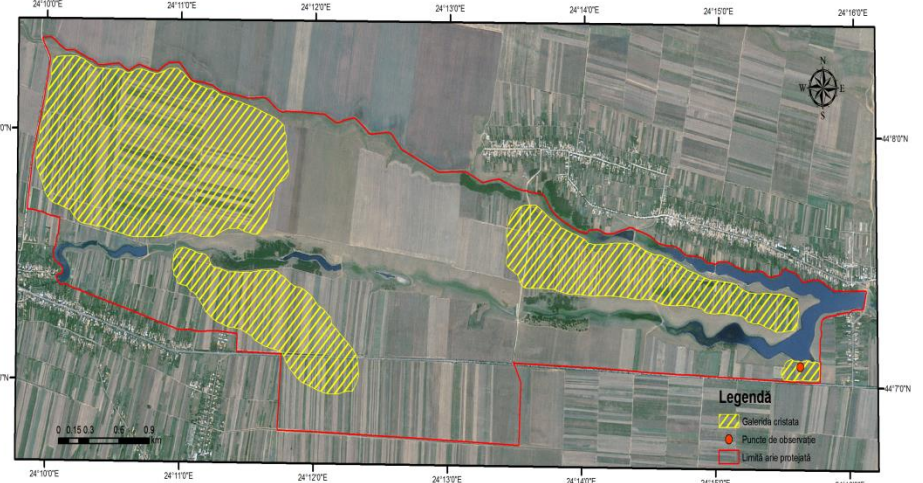
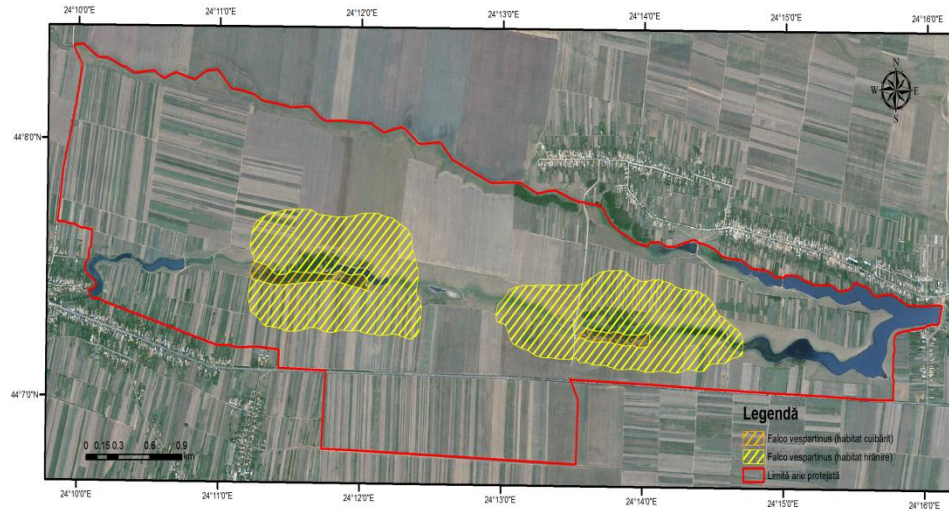
Hărțile distribuției speciilor *Circus Cyaneus* (stânga sus), *Columba palumbus* (dreapta sus), *Coracias garrulus* (stânga jos) și *Coturnix coturnix* (dreapta jos)



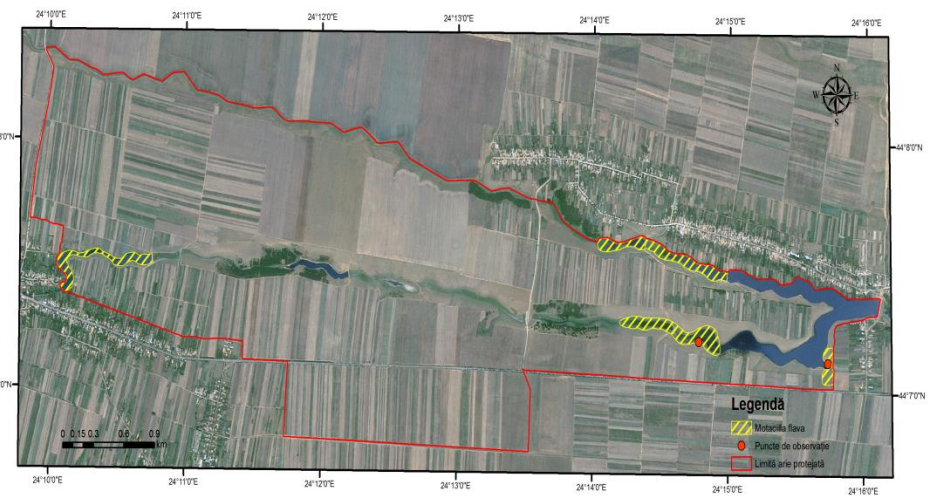
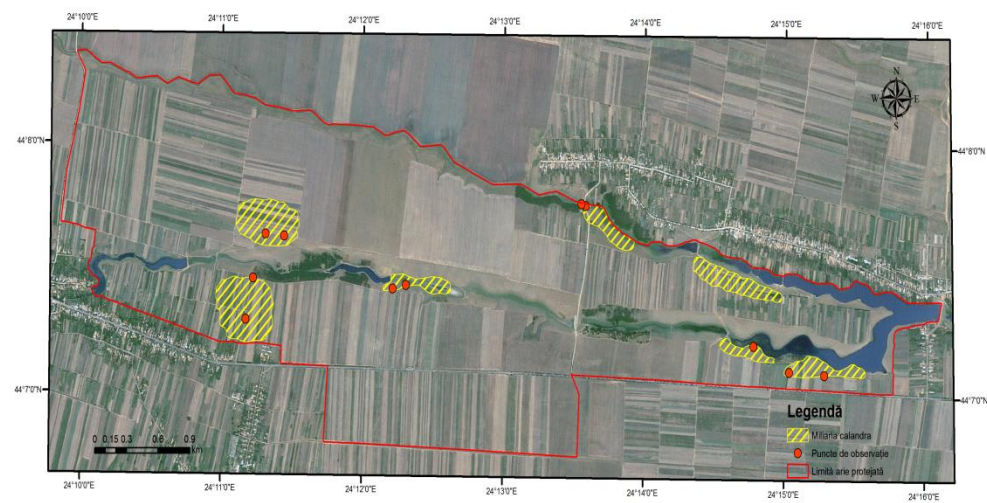
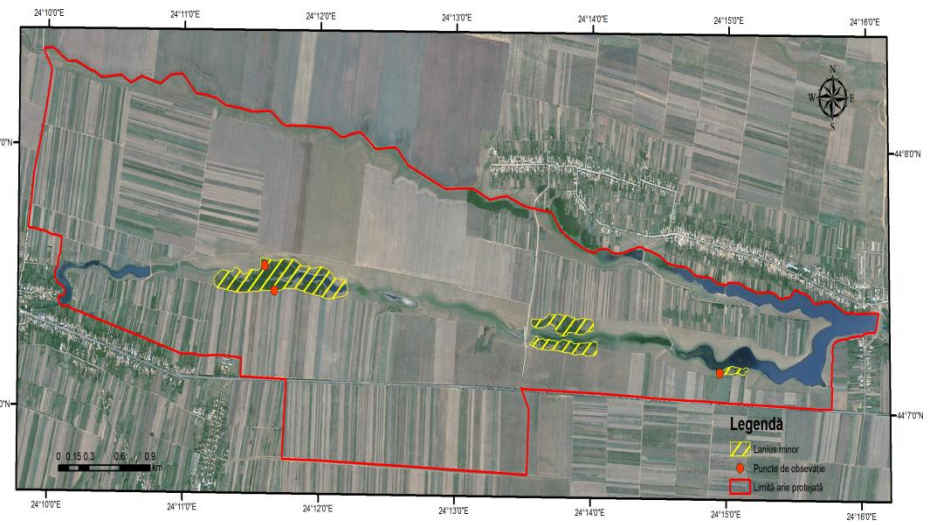
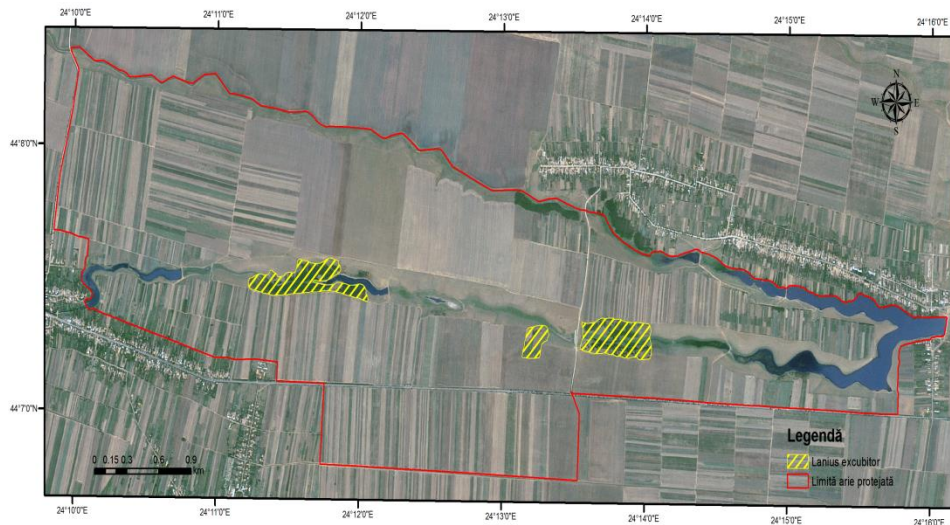
Hărțile distribuției speciilor *Cuculus canorus* (stânga sus), *Egretta garzetta* (dreapta sus), *Emberiza hortulana* (stânga jos) și *Falco tinnunculus* (dreapta jos)



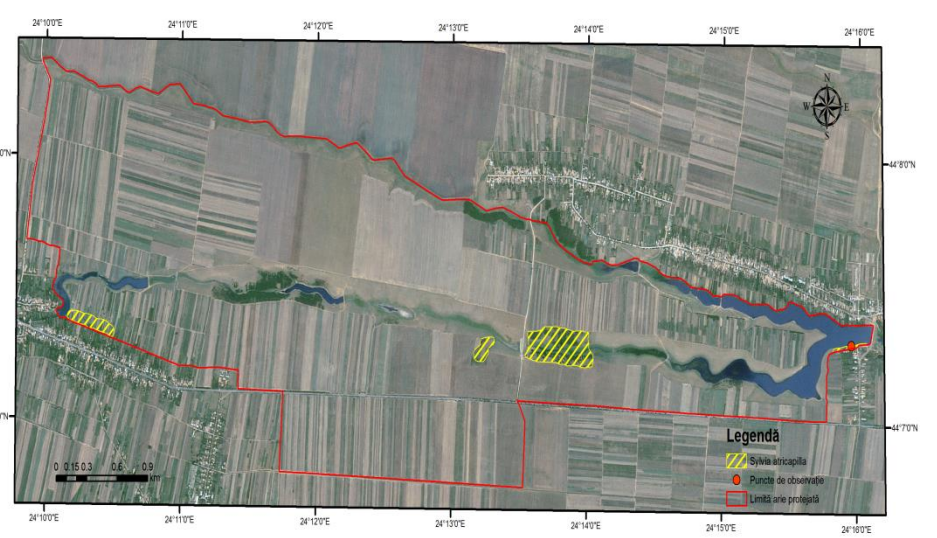
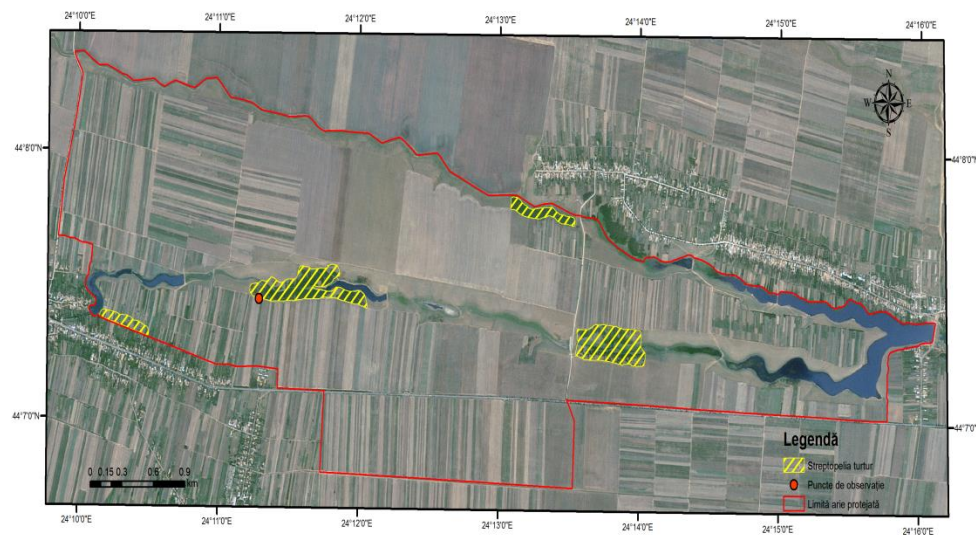
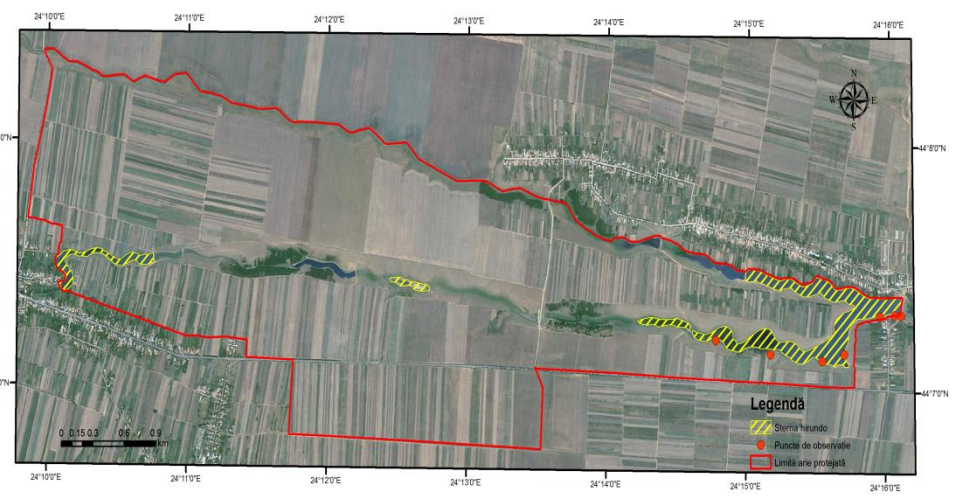
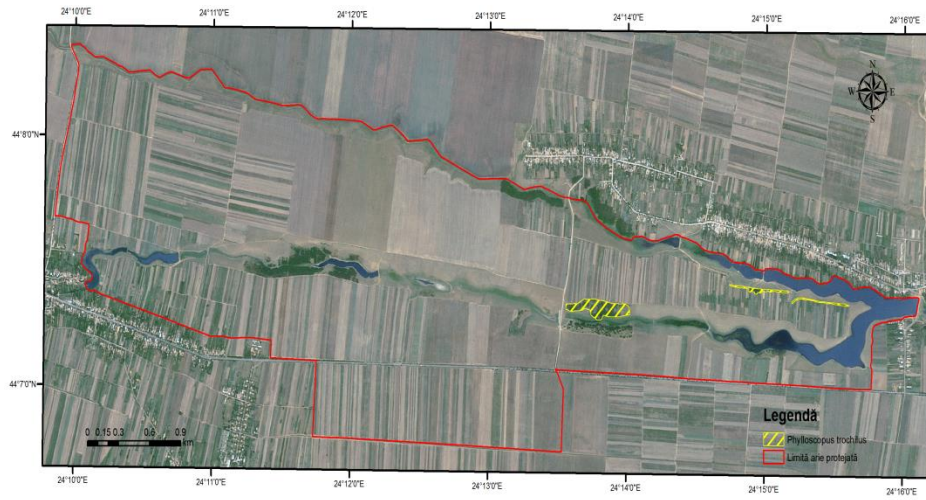
Hărțile distribuției speciilor *Falco vespertinus* (stânga sus), *Galerida cristata* (dreapta sus), *Hirundo rustica* (stânga jos) și *Lanius collurio* (dreapta jos)



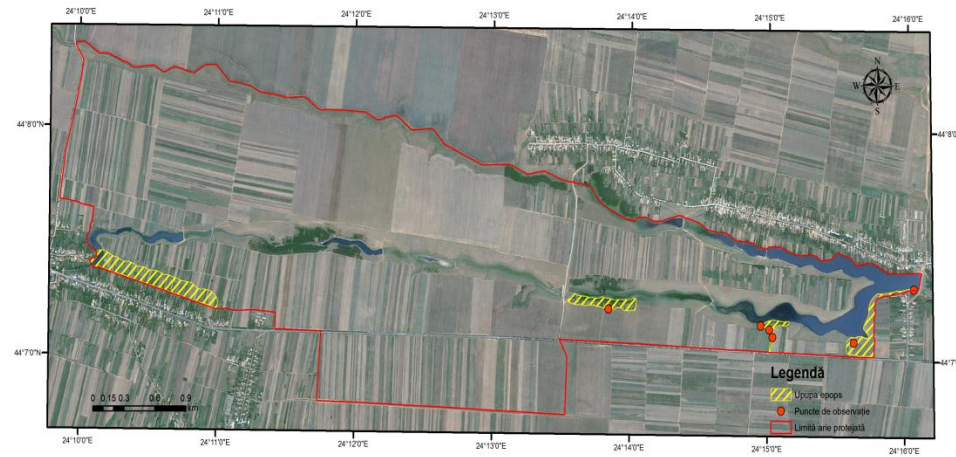
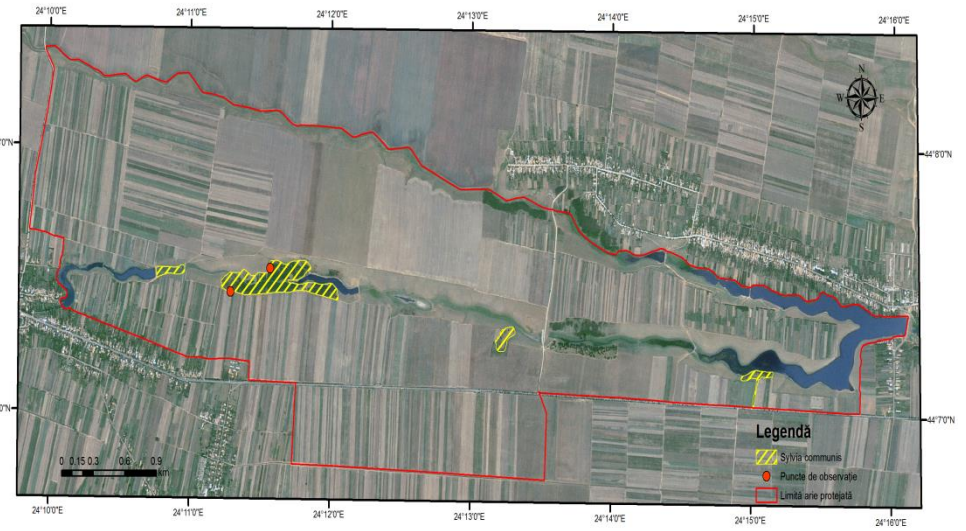
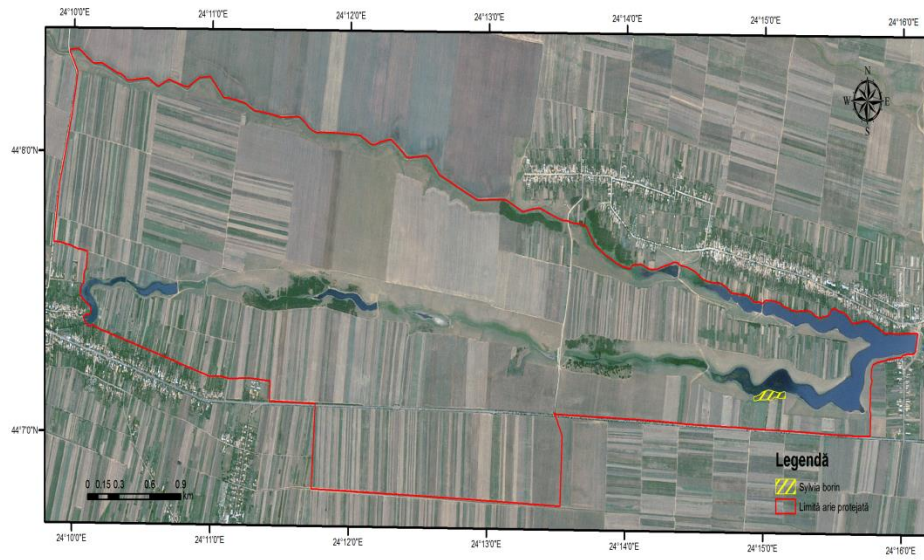
Hărțile distribuției speciilor *Lanius excubitor* (stânga sus), *Lanius minor* (dreapta sus), *Miliaria calandra* (stânga jos) și *Motacilla flava* (dreapta jos)



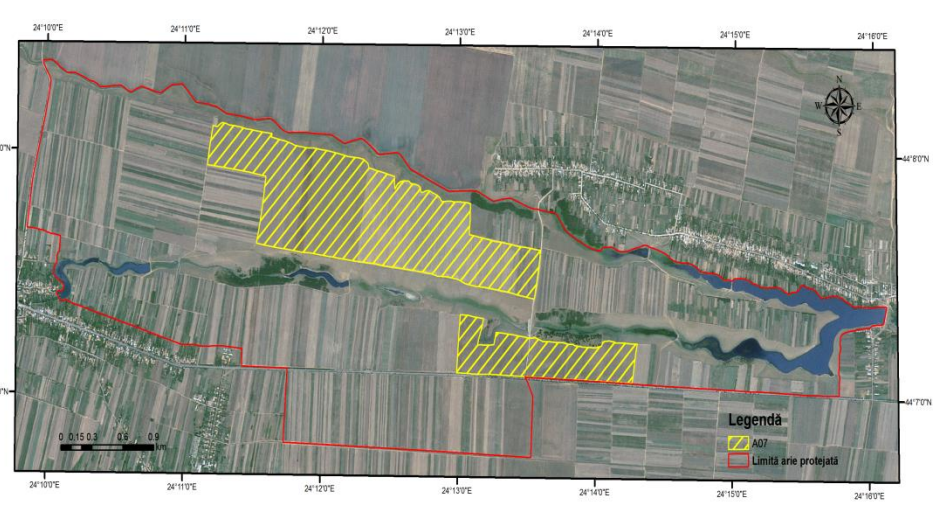
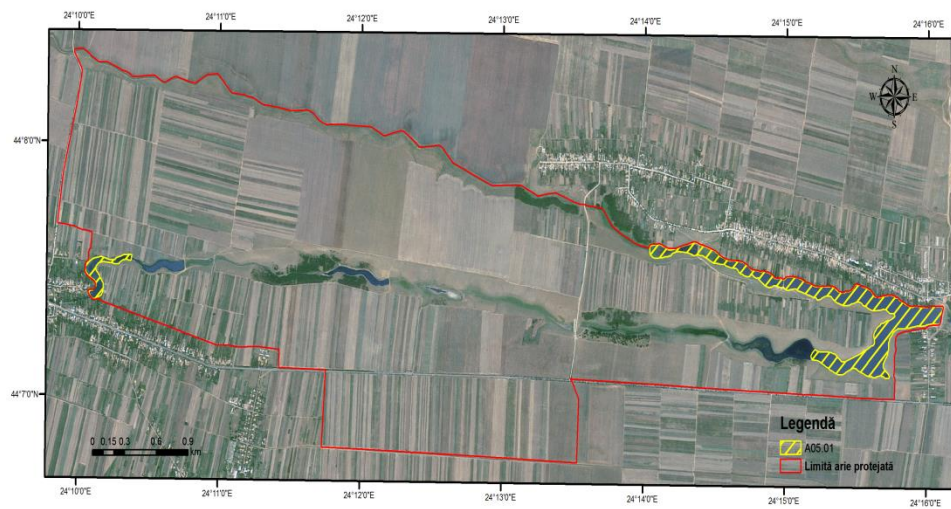
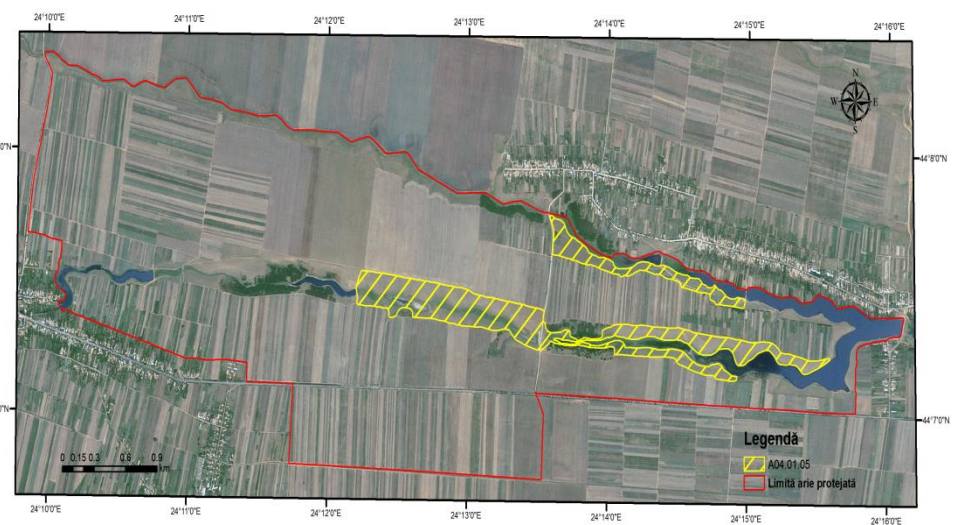
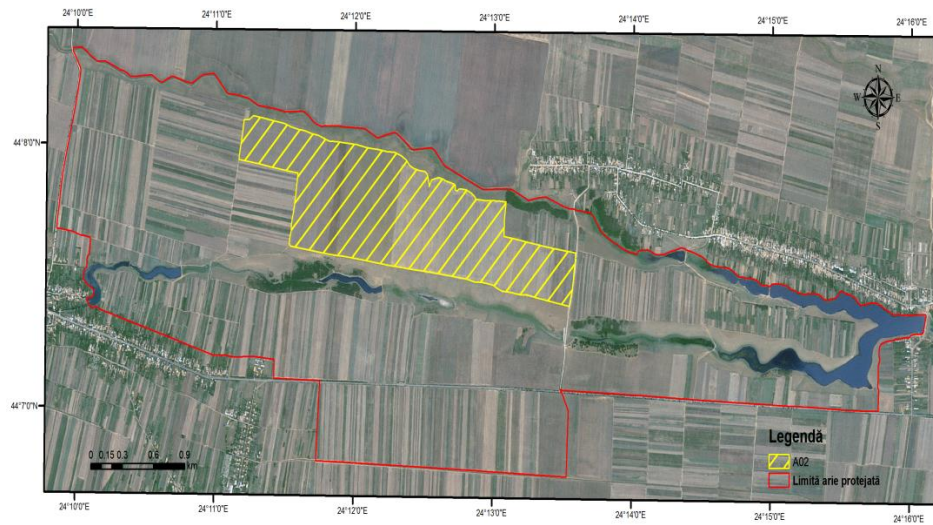
Hărțile distribuției speciilor *Phylloscopus trochilus* (stânga sus), *Sterna hirundo* (dreapta sus), *Streptopelia turtur* (stânga jos) și *Sylvia atricapilla* (dreapta jos)



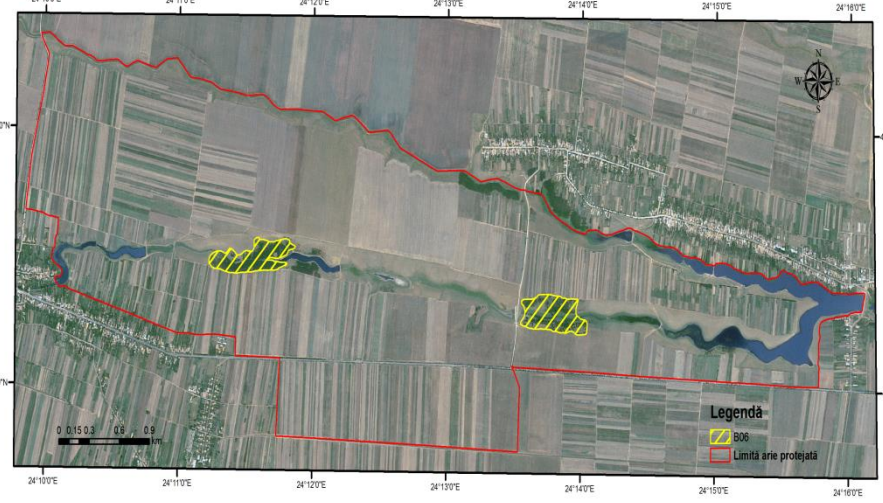
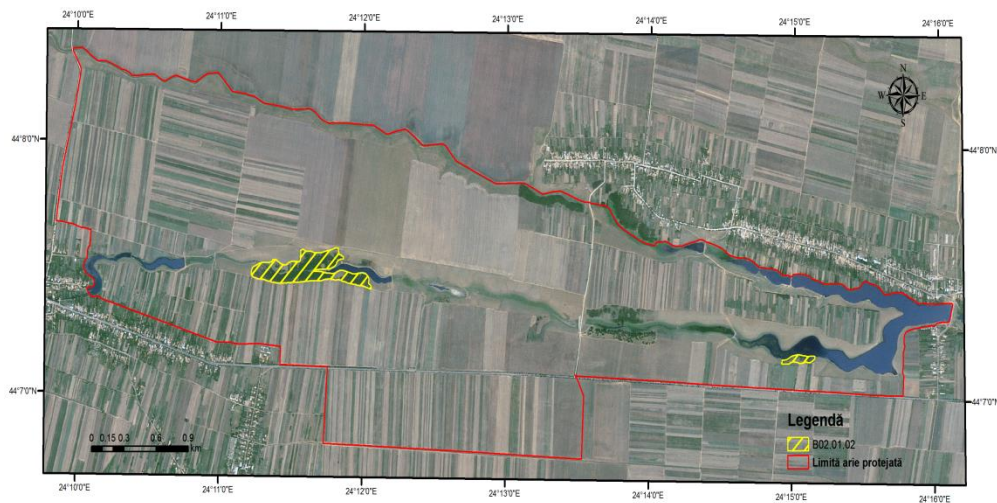
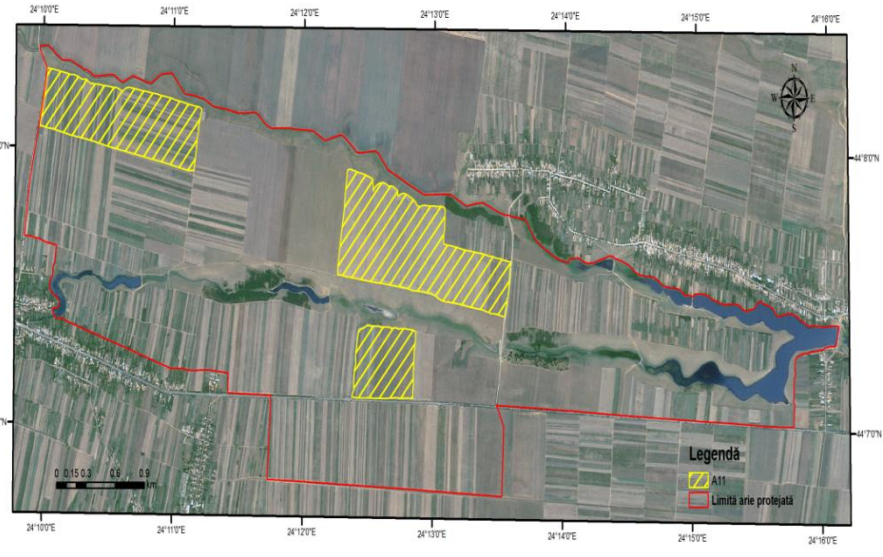
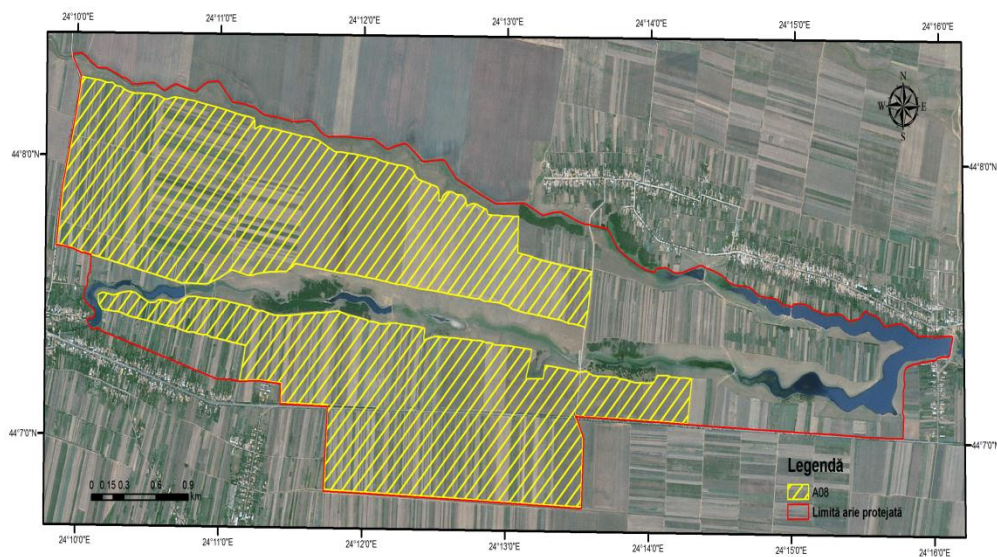
Hărțile distribuției speciilor *Sylvia borin* (stânga sus), *Sylvia communis* (dreapta sus) și *Upupa epops* (centru)



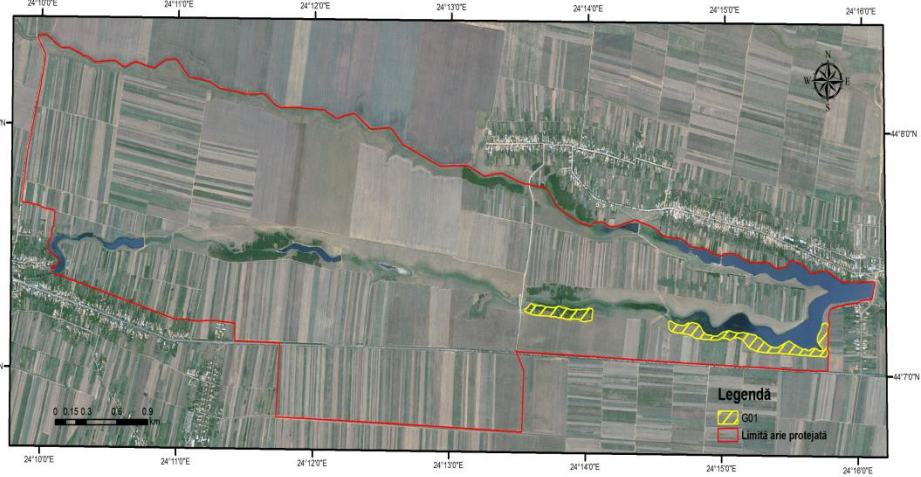
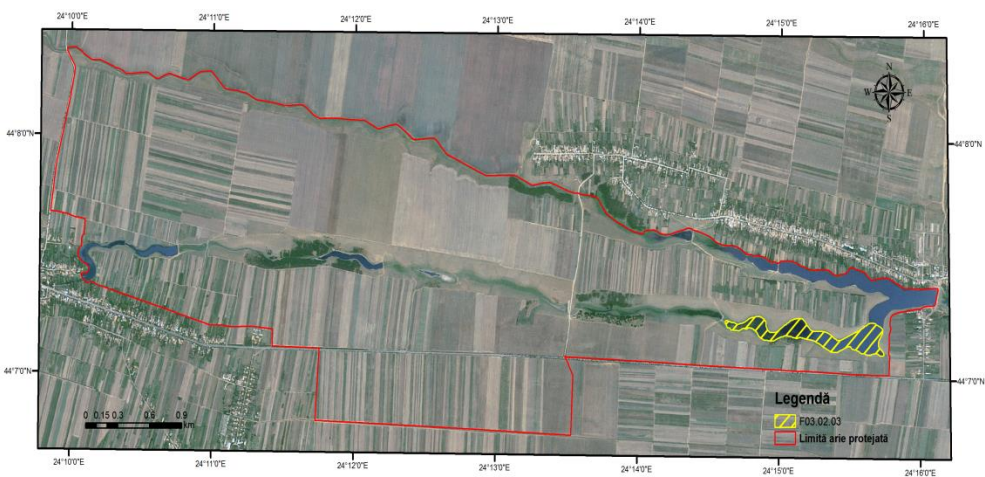
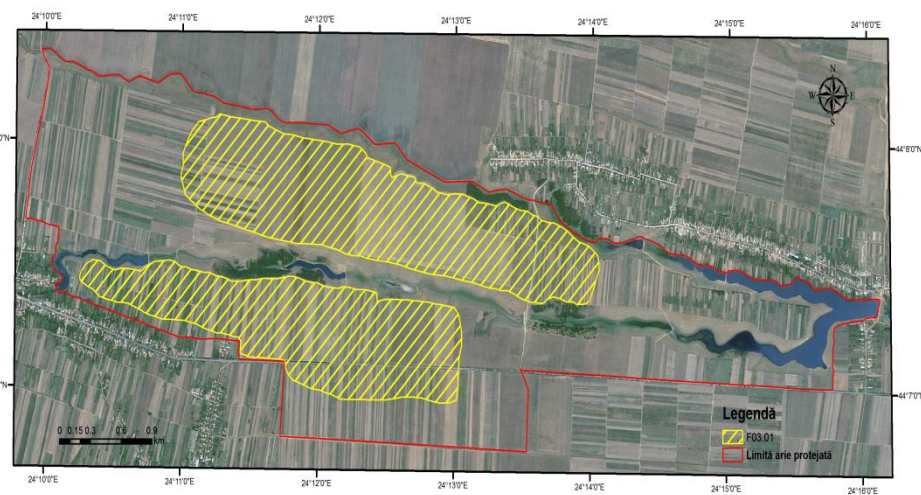
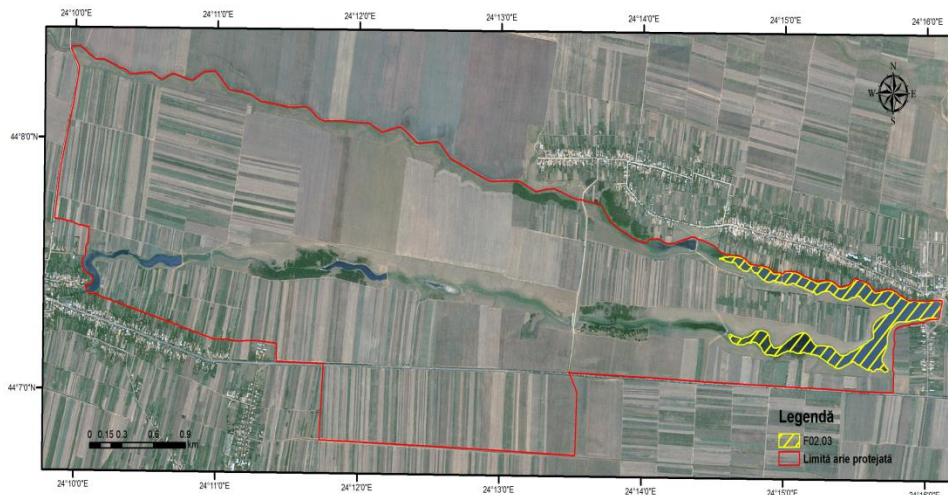
**Hărțile presiunilor A02. - modificarea practicilor de cultivare (stânga sus), A04. 01.05. - pășunatul intensiv în amestec de animale (dreapta sus),
A05.01. - creșterea animalelor (stânga jos) și A07. - utilizarea produselor biocide, hormoni și substanțe chimice (dreapta jos)**



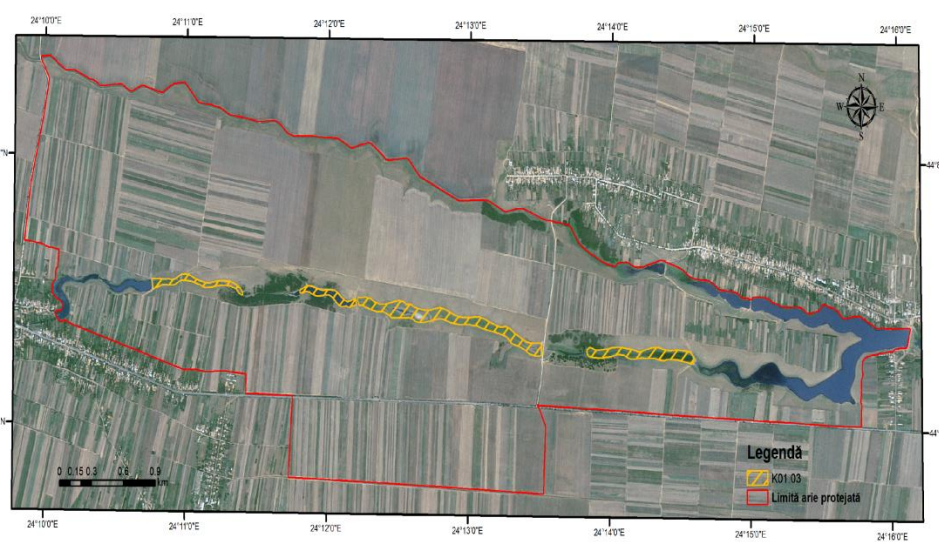
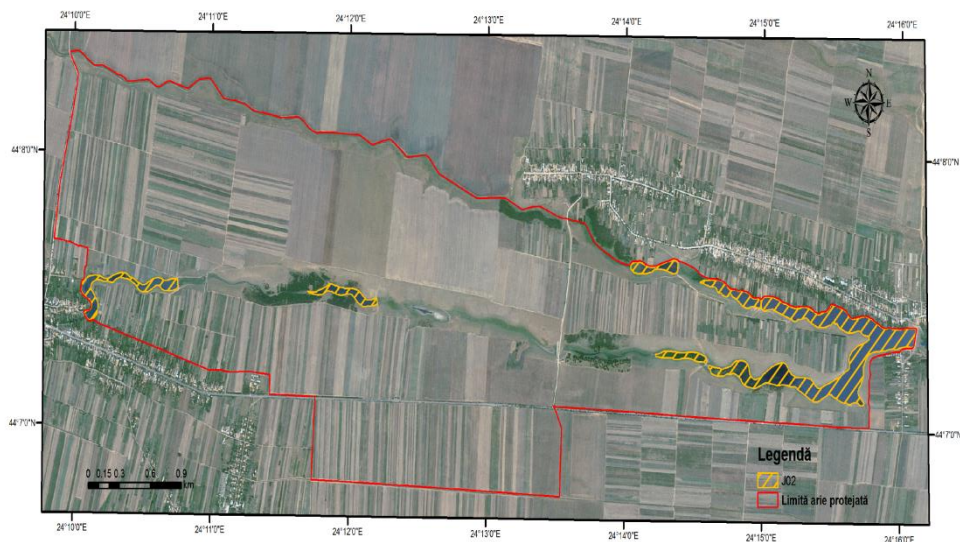
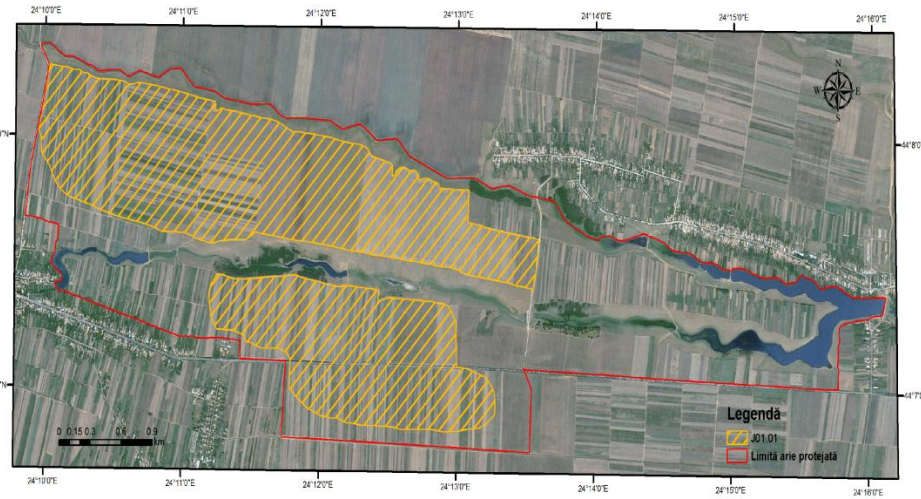
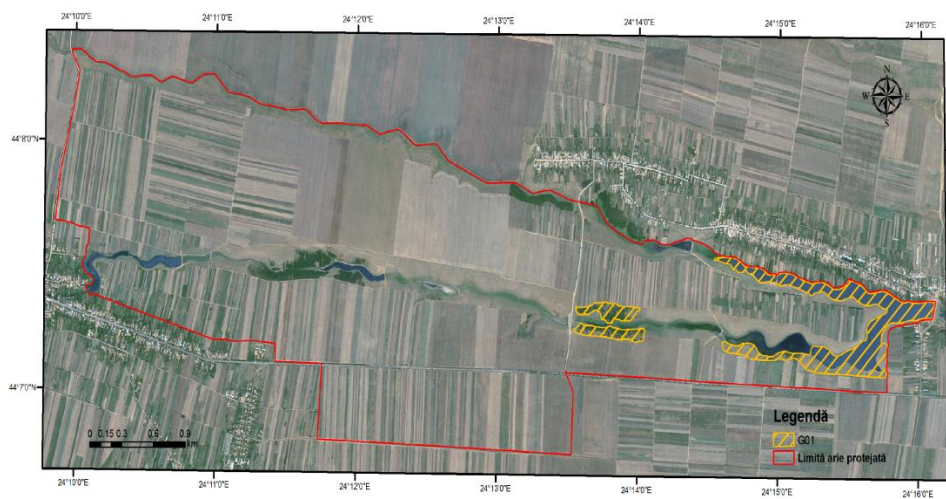
Hărțile presiunilor A08. - fertilizarea (cu îngrășământ) (stânga sus), A 11. - alte activități agricole decât cele listate mai sus – arderea miriștilor (dreapta sus), B02.01.02. - replantarea pădurii - arbori nenativi (stânga jos) și B 06. - pășunatul în pădure/în zona împădurită (dreapta jos)



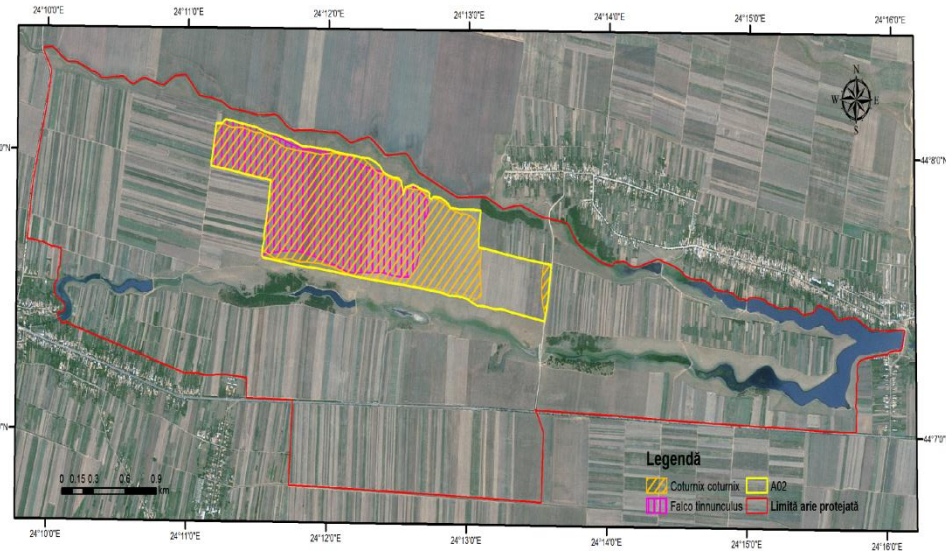
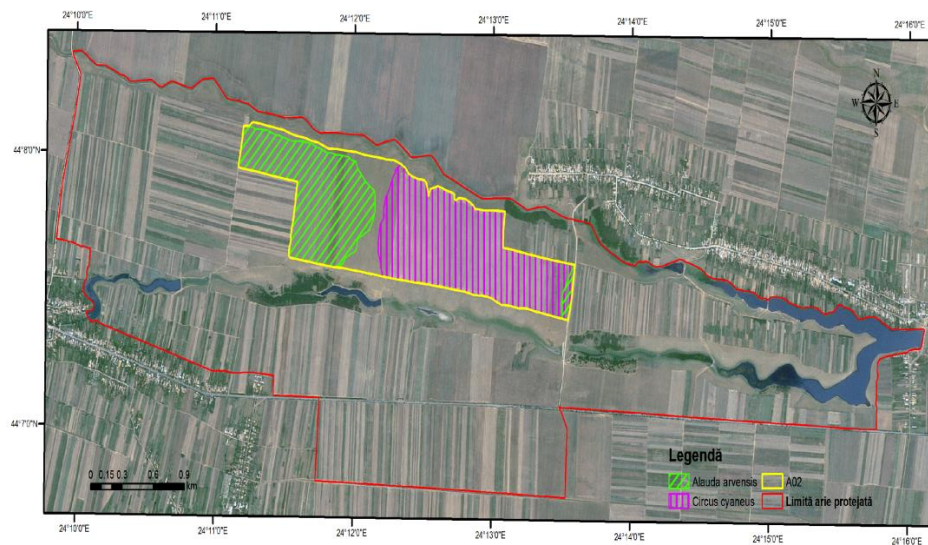
Hărțile presiunilor F02.03. - pescuit de agrement (stânga sus), F03.01. - vânătoare (dreapta sus), F03.02.03. - capcane, otrăvire, braconaj (stânga jos) și G01. - Sport în aer liber, activități de petrecere a timpului liber, activități recreative (dreapta jos)

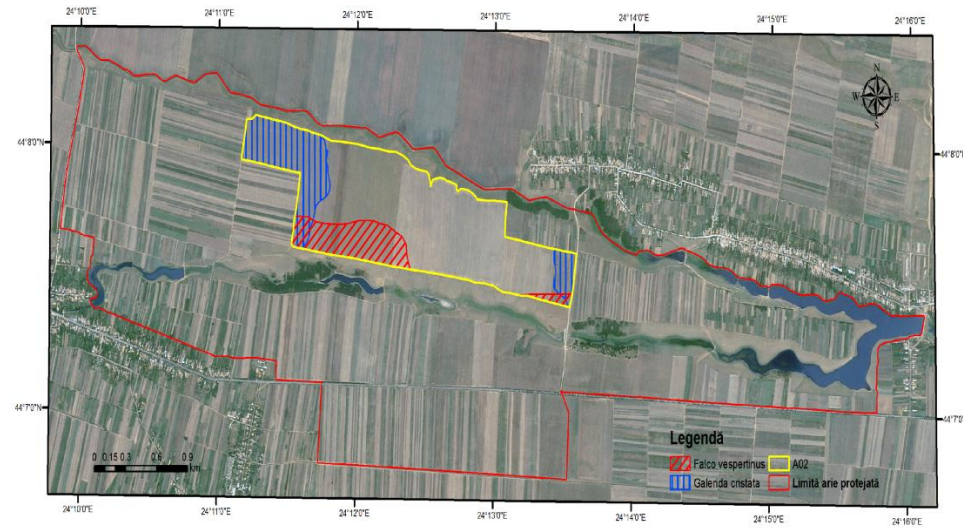


Hărțile amenințărilor G01. - sport în aer liber, activități de petrecere a timpului liber, activități recreative (stânga sus), J01.01 - incendii (dreapta sus), J02. - schimbări provocate de oameni în sistemele hidraulice (zone umede și mediul marin) (stânga jos) și K01.03 - secarea (dreapta jos)

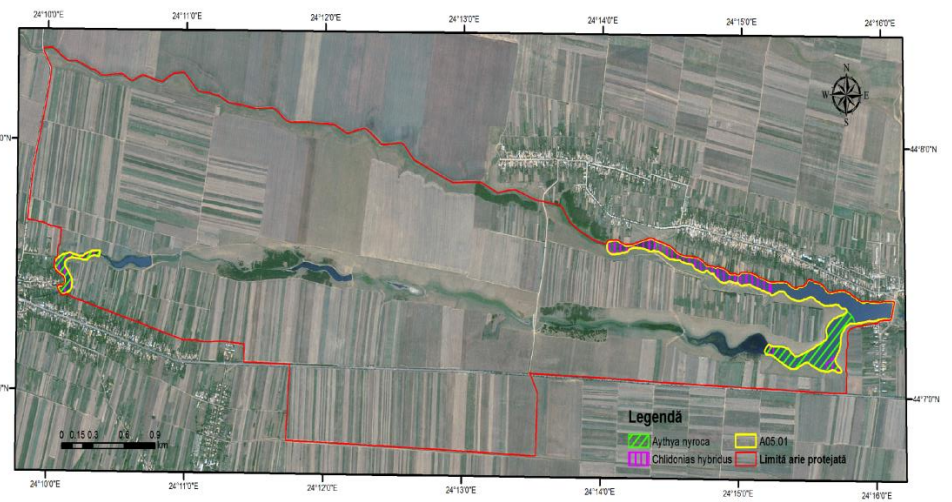
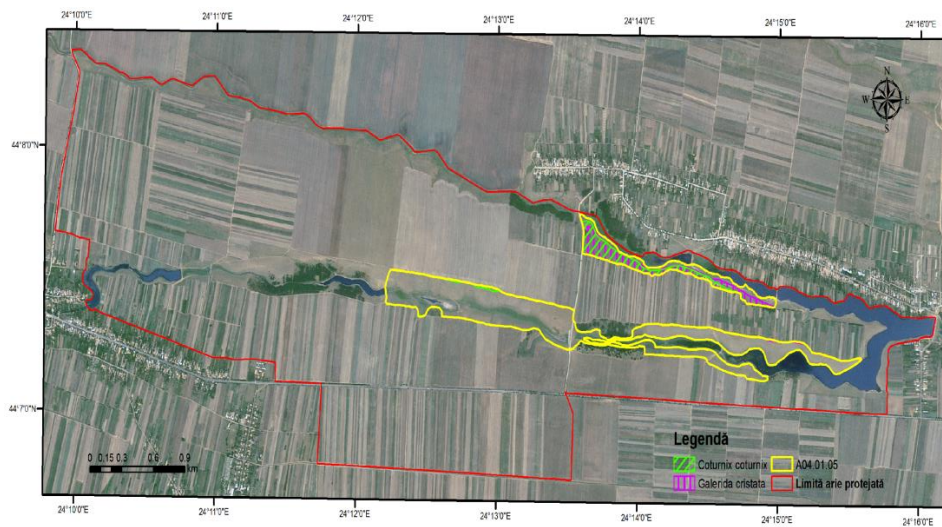


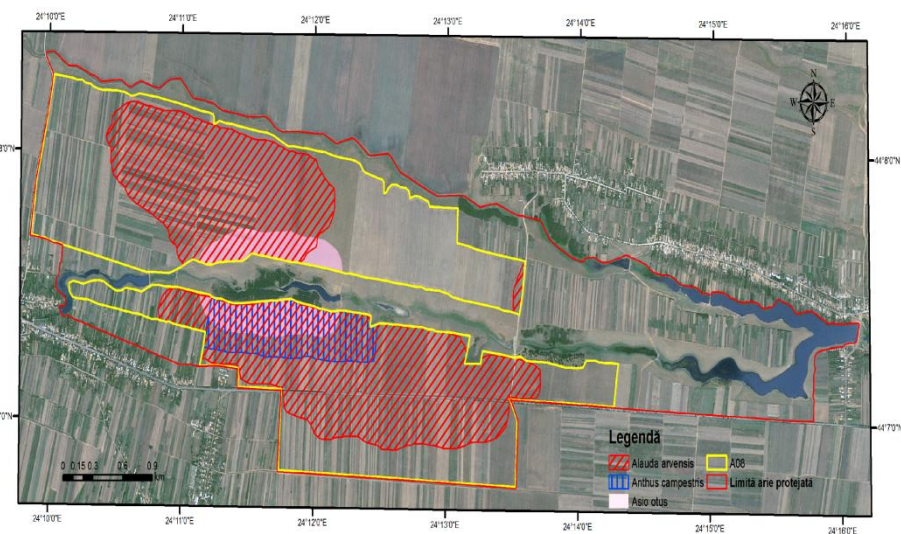
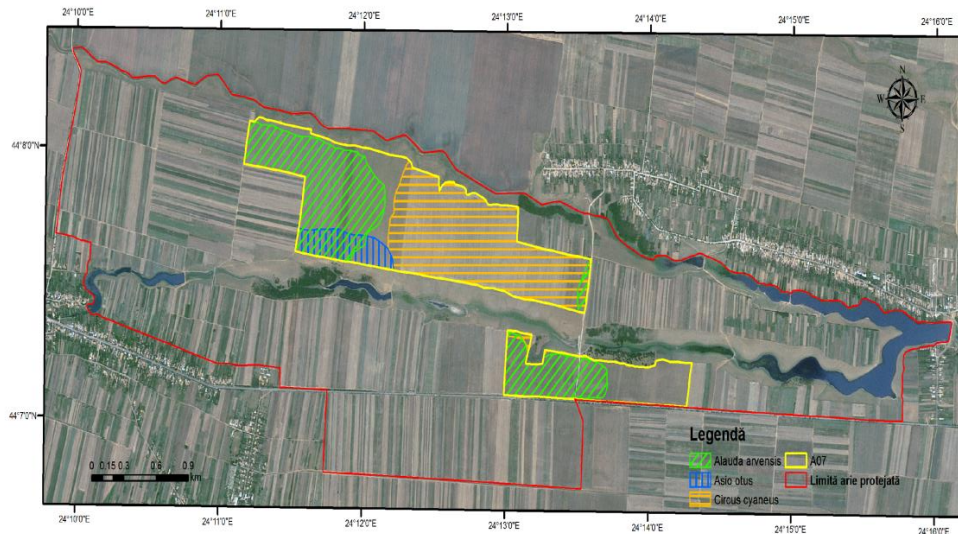
Localizarea impacturilor asupra speciilor pentru presiunea A02. - modificarea practicilor de cultivare



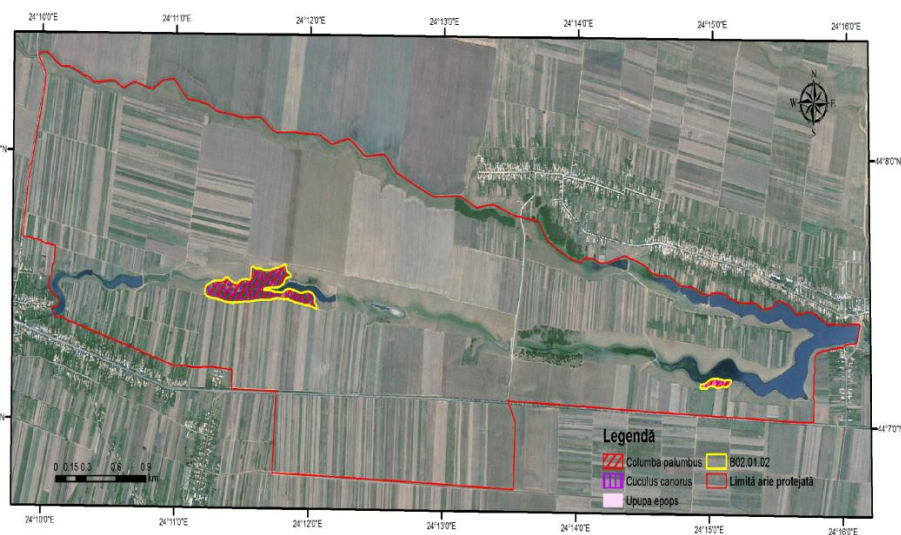
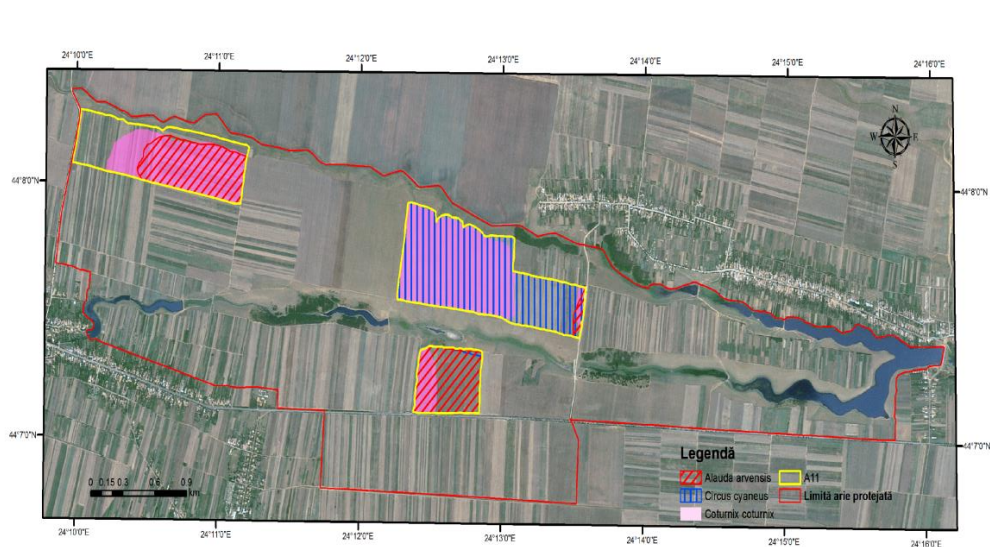


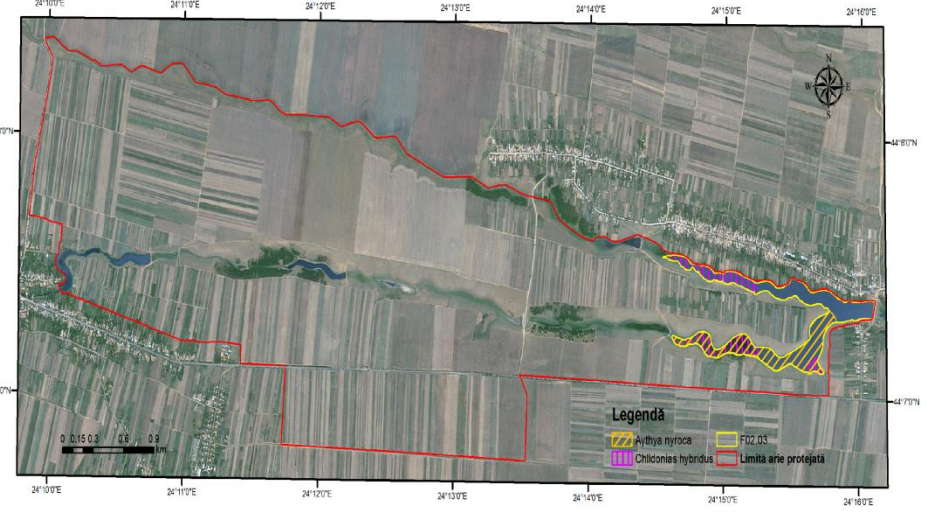
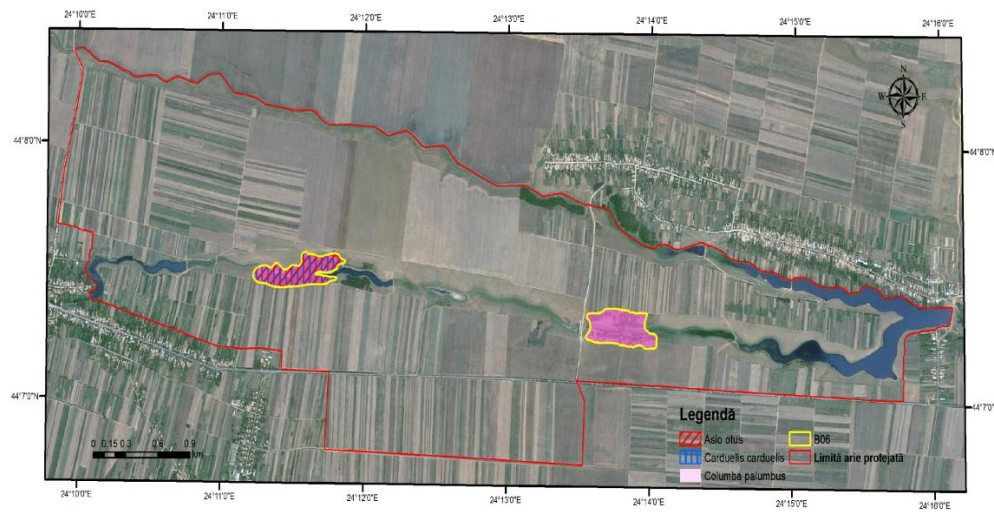
Localizarea impacturilor asupra speciilor pentru presiunea A04. 01.05. - pășunatul intensiv în amestec de animale (stânga sus), A05.01. - creșterea animalelor (dreapta sus), A07. - utilizarea produselor biocide, hormoni și substanțe chimice (stânga jos) și A08. - fertilizarea (cu îngrășământ) (dreapta jos)



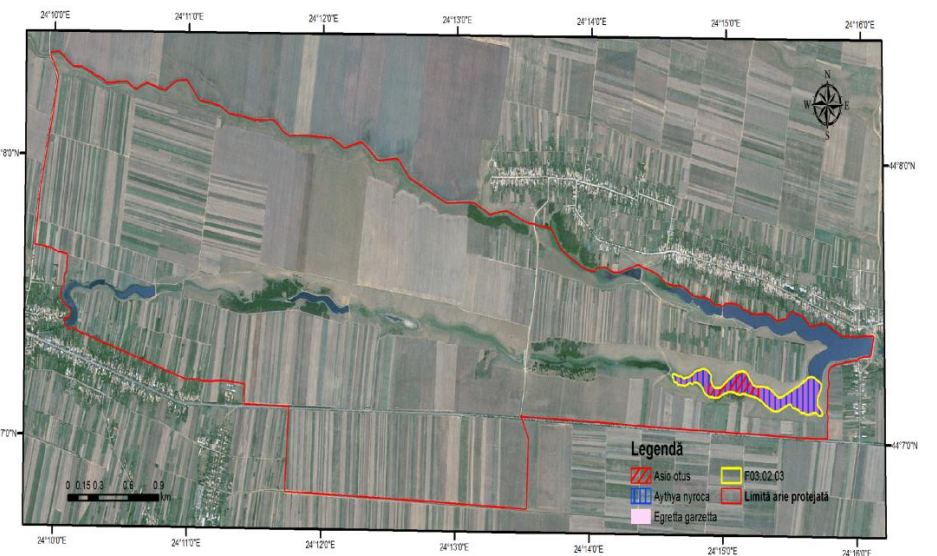
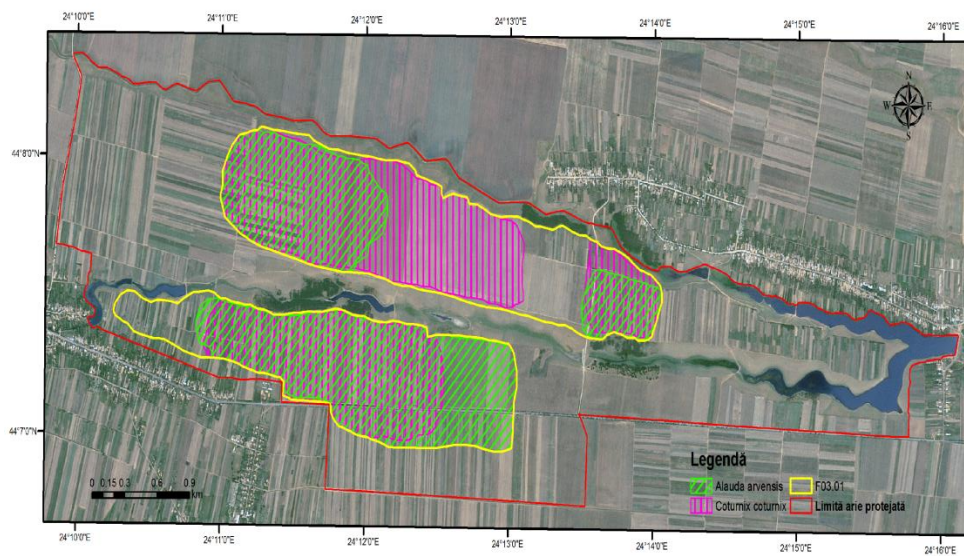


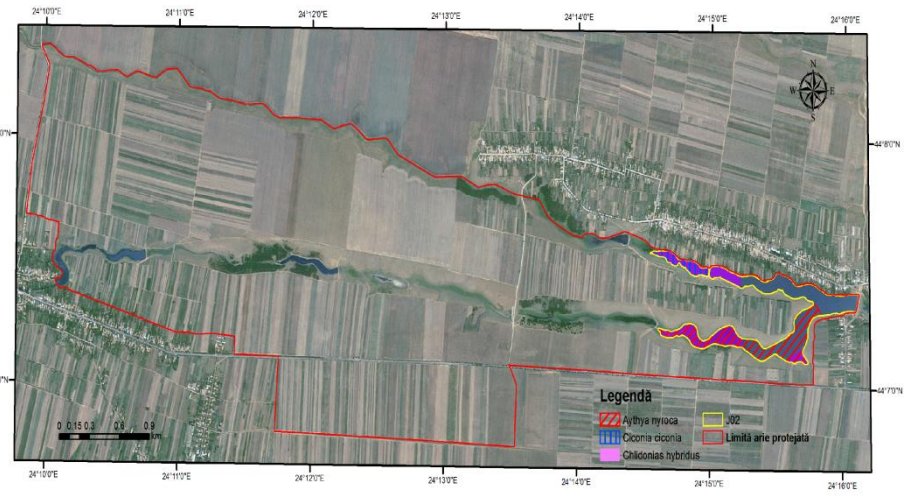
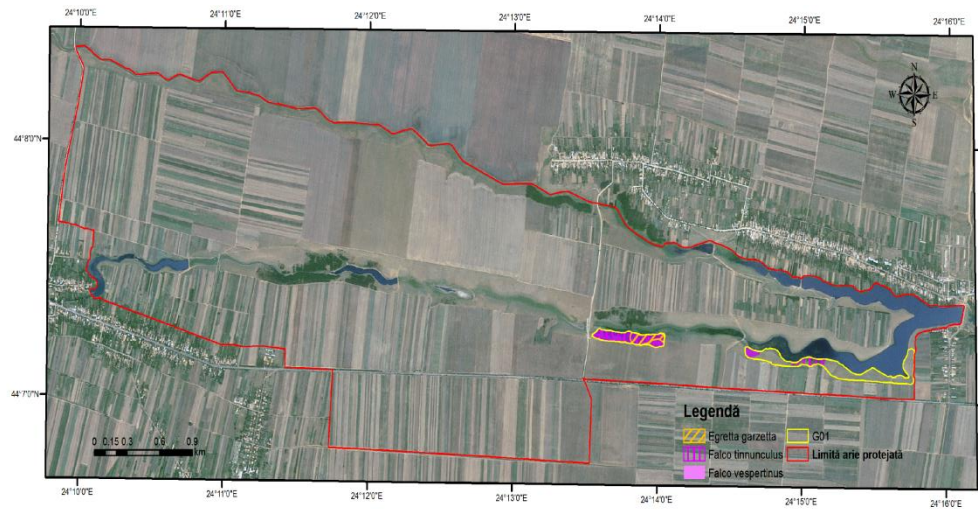
Localizarea impacturilor asupra speciilor pentru presiunea A 11. - alte activități agricole decât cele listate mai sus – arderea miriștilor (stânga sus), B02.01.02. - replantarea pădurii - arbori nenativi (dreapta sus), B 06. - pășunatul în pădure/în zona împădurită (stânga jos) și F02.03. - pescuit de agrement (dreapta jos)



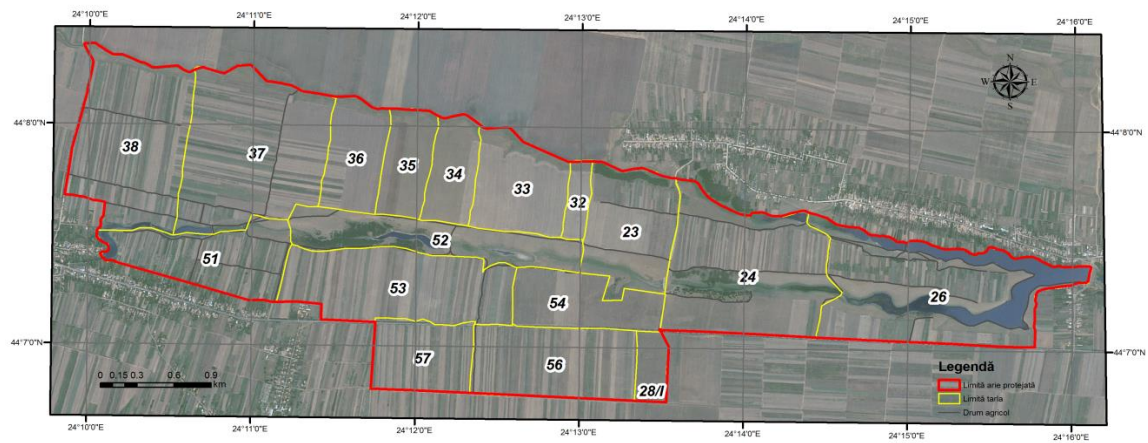


Localizarea impacturilor asupra speciilor pentru presiunea F03.01. - vânătoare (stânga sus), F03.02.03. - Capcane, otrăvire, braconaj (dreapta sus), G01. - Sport în aer liber, activități de petrecere a timpului liber, activități recreative (stânga jos) și presiunea J02. - Schimbări provocate de oameni în sistemele hidraulice (zone umede și mediul marin) (dreapta jos)





Hartă cu categorii de folosință teren



Hartă cu regimul de administrare a terenului

