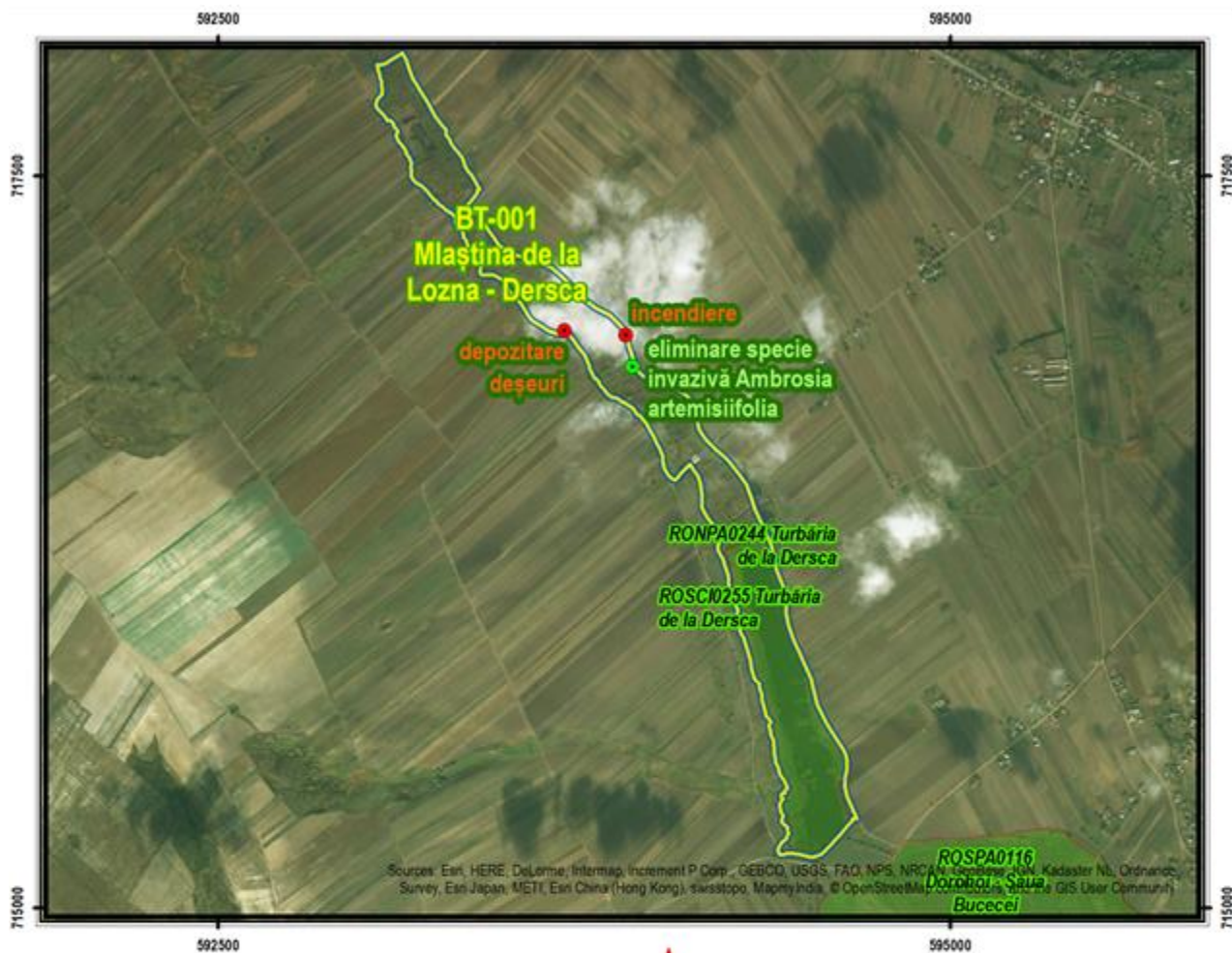


Annex 7.4 Restoration schemes NE-2 Region

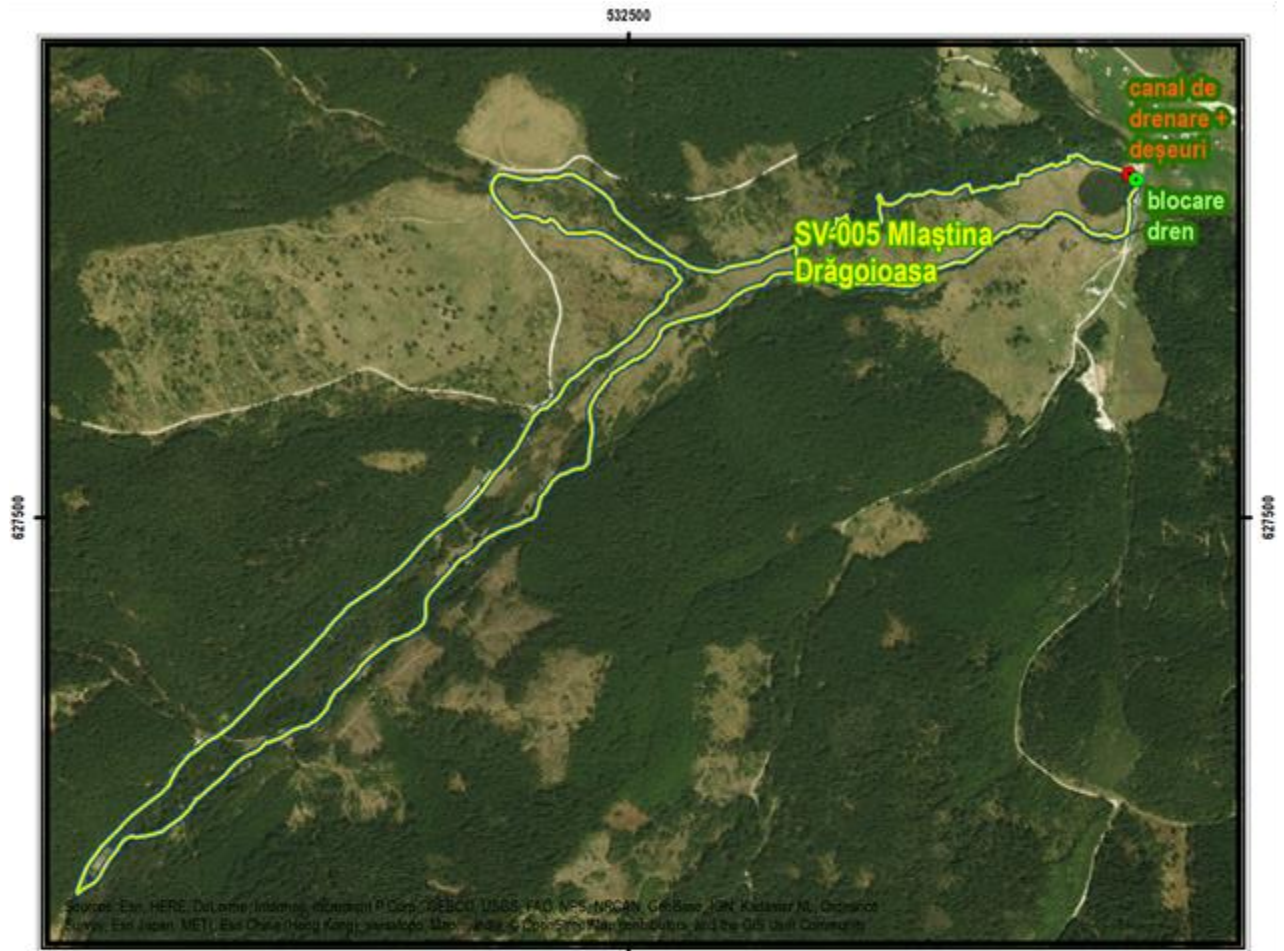
Restoration scheme no. 1

BT-001 – Mlaștina de la Lozna – Dersca



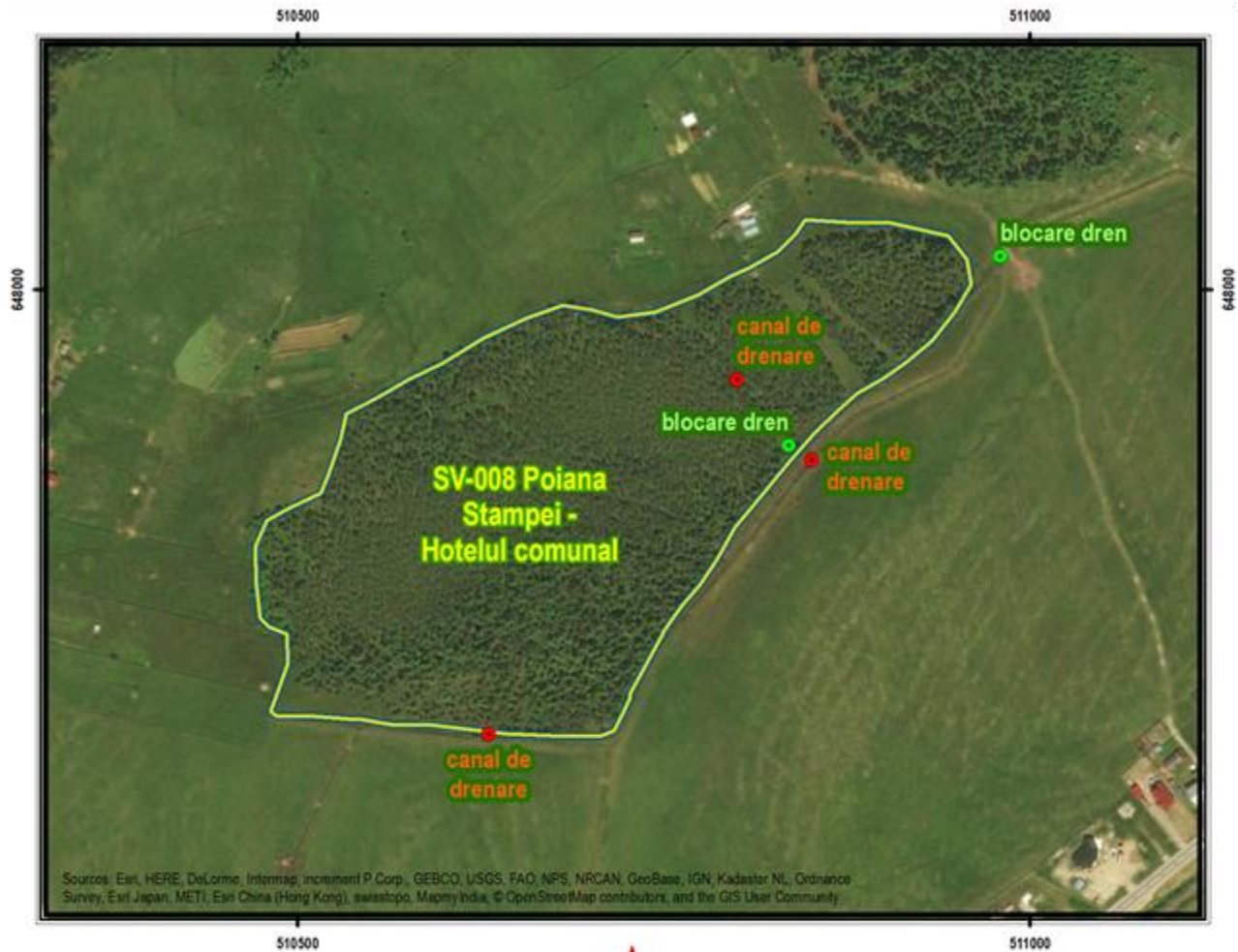
Restoration scheme no. 2

SV-005 – Mlaștina Drăgoioasa



Restoration scheme no.3

SV-008 – Poiana Stampei – Hotelul comunal



Legend:

- impact
- măsură
- ecosistem de turbărie

Map of Romania: A small map of Romania with a red arrow pointing to the location of SV-008 Poiana Stampei. Neighboring countries (SERBIA, MOLDOVA, UKRAINE) and major cities (Bucharest, Cluj, Timisoara) are labeled.

Scale and Coordinates:

- Scale: 1:5000
- Scale bar: 0, 50, 100 metri
- Sistem de coordonate: Pulkovo 1942 Adj 58 Stereo 70

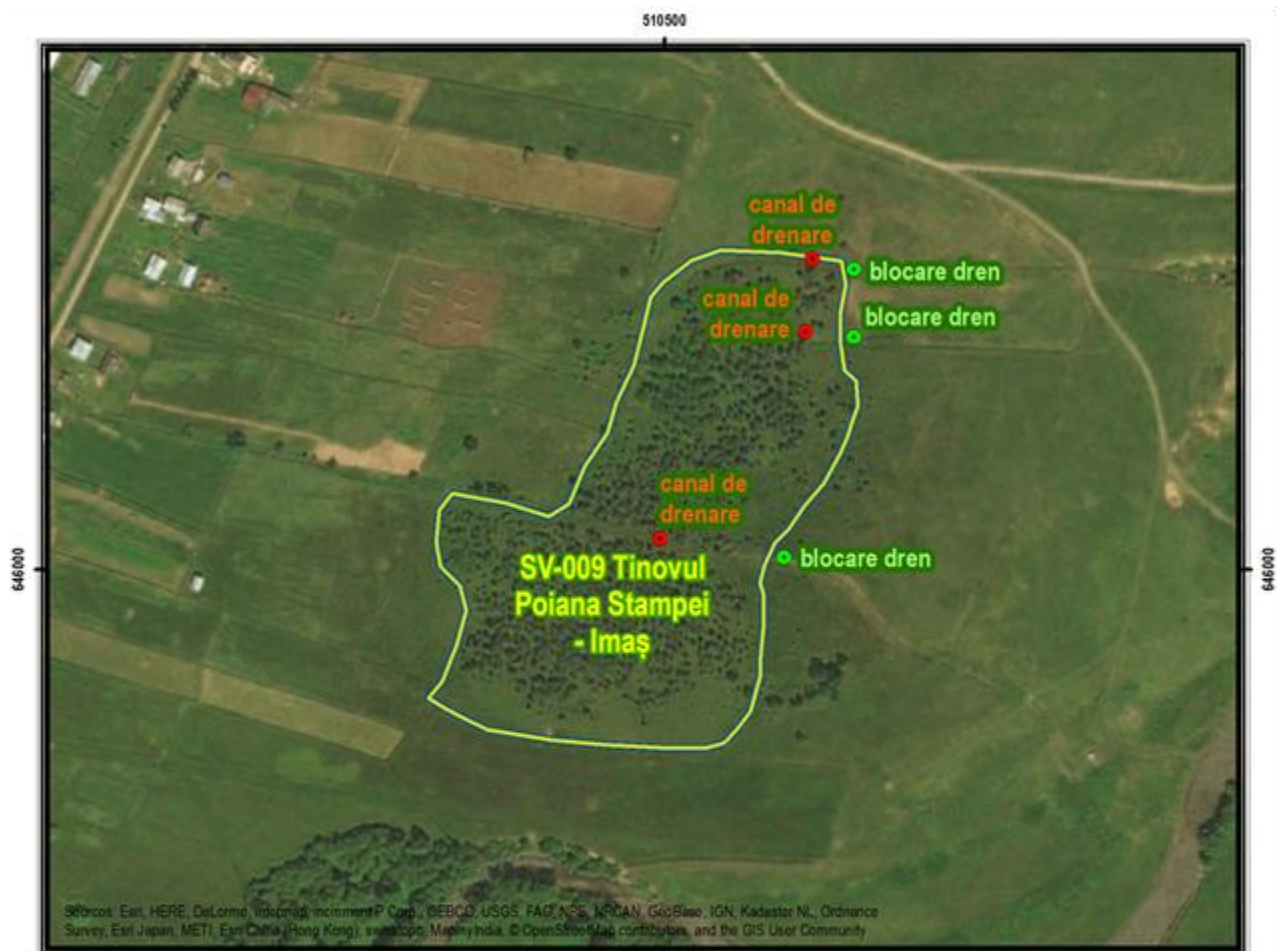
Map Information:

- Data realizării hărții: aprilie 2017
- Cartografie digitală / GIS: Ciprian Samoilă
- Ecosisteme de turbărie: IBB - www.ibbiol.ro/peatro

Sources: Esri, HERE, DeLorme, Intermap, increment P Corp., GEBCO, USGS, FAO, NPS, NRCAN, GeoBase, IGN, Kadaster NL, Ordnance Survey, Esri Japan, METI, Esri China (Hong Kong), Swisstopo, MapmyIndia, © OpenStreetMap contributors, and the GIS User Community

Restoration scheme no. 4

SV-009 – Tinovul Poiana Stampei - Imaș



● impact
● măsură

 ecosistem de turbărie



0 50 100 metri
1:4000

Sistem de coordonate:
Pulkovo 1942 Adj 58 Stereo 70

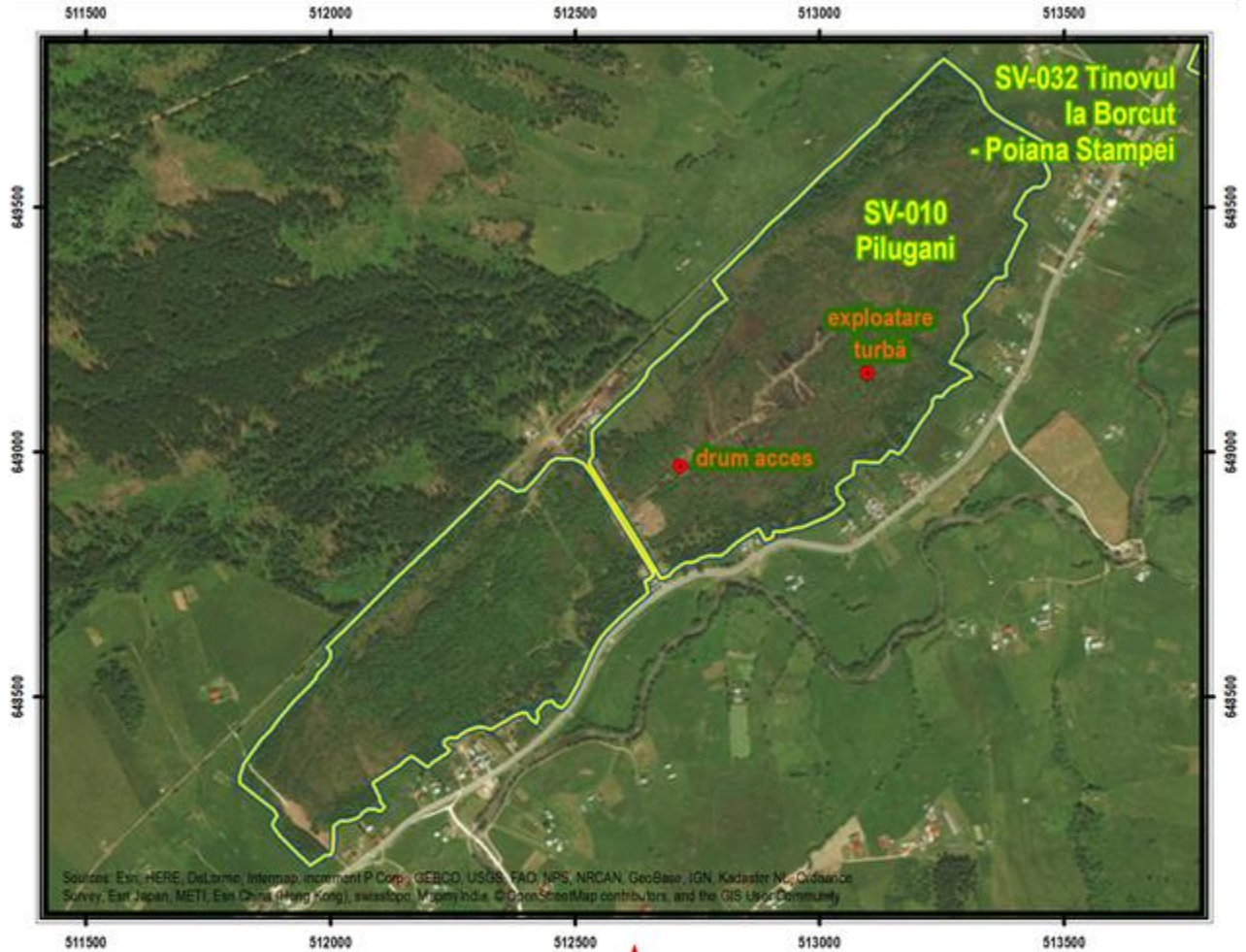
Data realizării hărții: aprilie 2017
Cartografie digitală / GIS: Ciprian Samoilă

Ecosisteme de turbărie: IBB - www.ibb.ro/peatro

Restoration scheme no. 5

SV-010 – Pilugani

SV-032 – Tinovul la Borcut – Poiana Stampei



Sources: Esri, HERE, DeLorme, Intermap, increment P Corp., GEBCO, USGS, FAO, NPS, NRCAN, GeoBase, IGN, Kadaster NL, Ordnance Survey, Esri Japan, METI, Esri China (Hong Kong), Swisstopo, Mapbox India, © OpenStreetMap contributors, and the GIS User Community

 impact

 ecosistem de turbărie





0 50 100 150 200 250 300 metri

1:15000

Sistem de coordonate:
Pulkovo 1942 Adj 58 Stereo 70

Data realizării hărții: aprilie 2017
Cartografie digitală / GIS: Ciprian Samolă

Ecosisteme de turbărie: IBB - www.ibiol.ro/peatro

Sources: Esri, HERE, DeLorme, Intermap, increment P Corp., GEBCO, USGS, FAO, NPS, NRCAN, GeoBase, IGN, Kadaster NL, Ordnance Survey, Esri Japan, METI, Esri China (Hong Kong), Swisstopo, Mapbox India, © OpenStreetMap contributors, and the GIS User Community

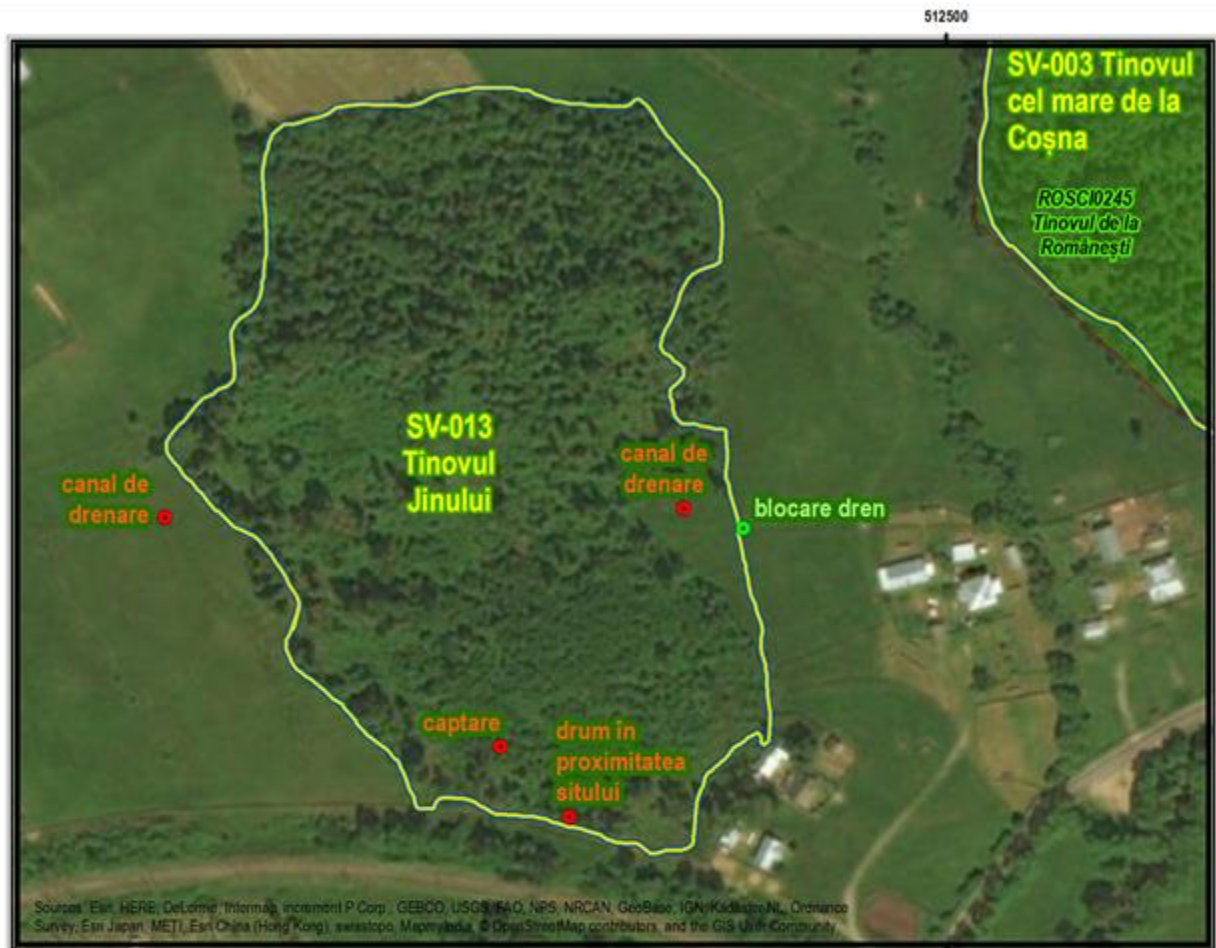
Restoration scheme no. 6

SV-011 – Mlaștina turboasă de la Criștișor (Lunca Negrei Broștenilor)



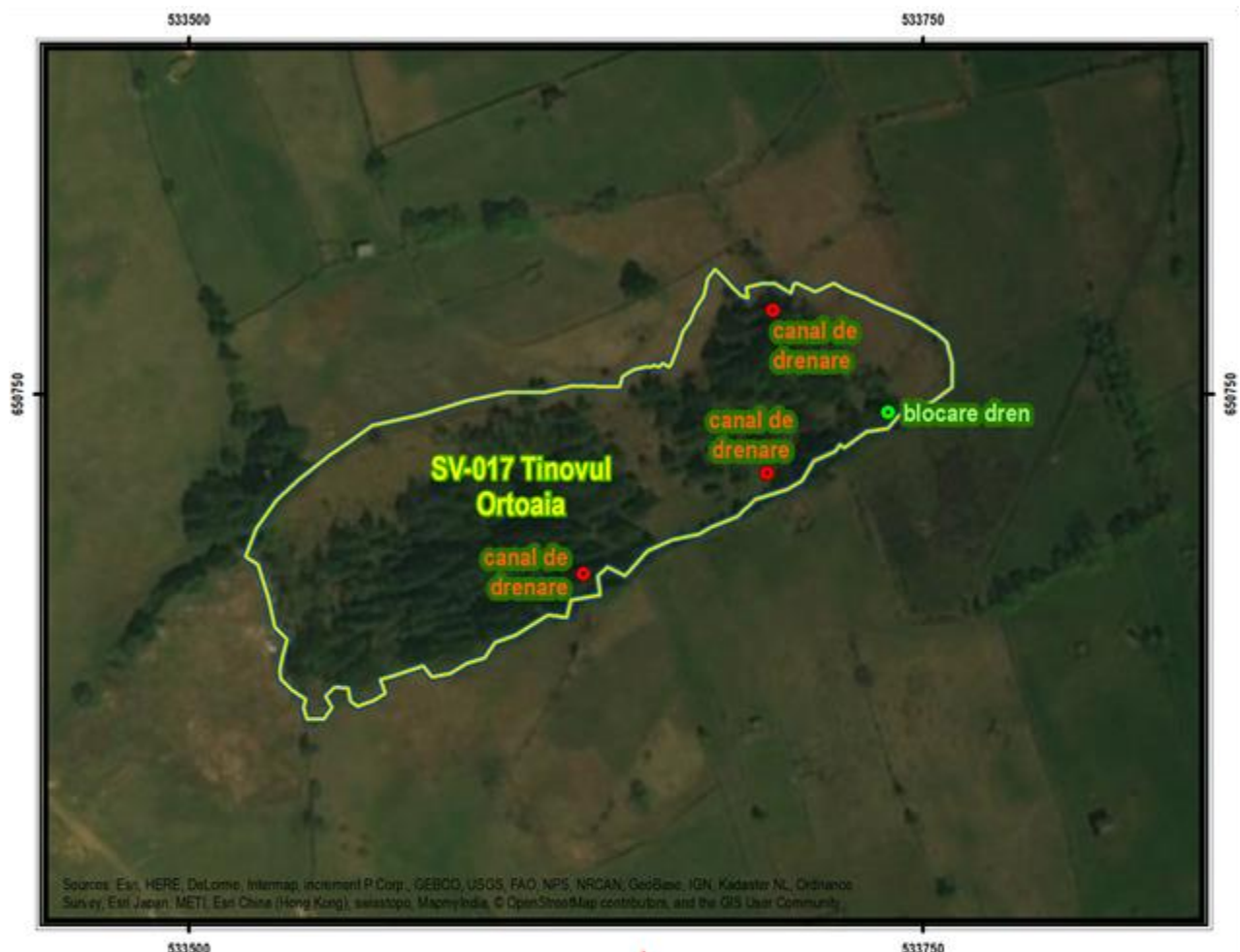
Restoration scheme no. 7

SV-013 – Tinovul Jinului



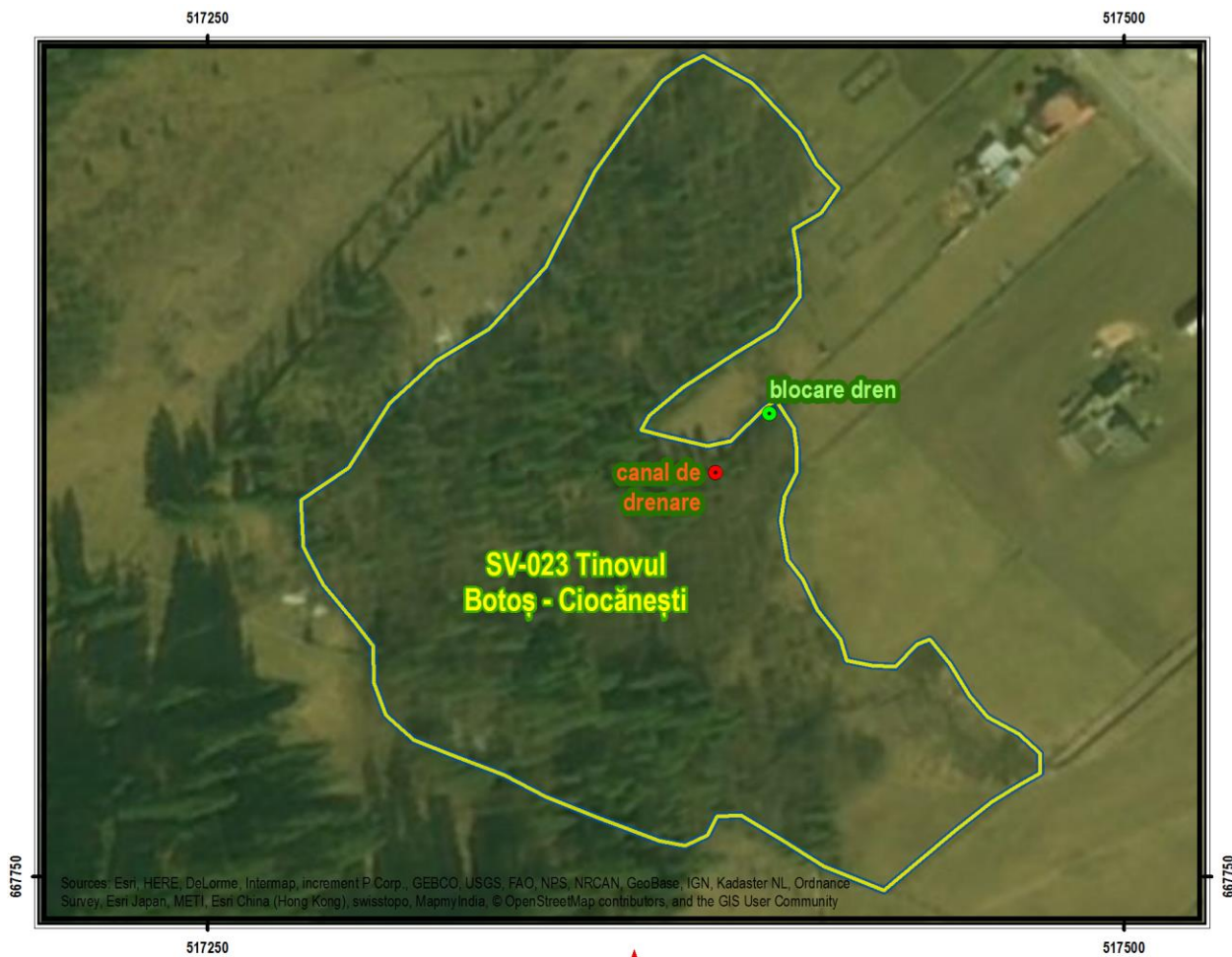
Restoration scheme no. 8

SV-017 – Tinovul Ortoaia



Restoration scheme no. 9

SV-023 – Tinovul Botoș - Ciocănești



Legend:

- impact
- măsură
- ecosistem de turbărie

Inset Map: A map of Romania with a red arrow pointing to the location of the restoration site in the northwestern part of the country.

Scale: 0 30 60 metri
1:2000

Sistem de coordonate:
Pulkovo 1942 Adj 58 Stereo 70

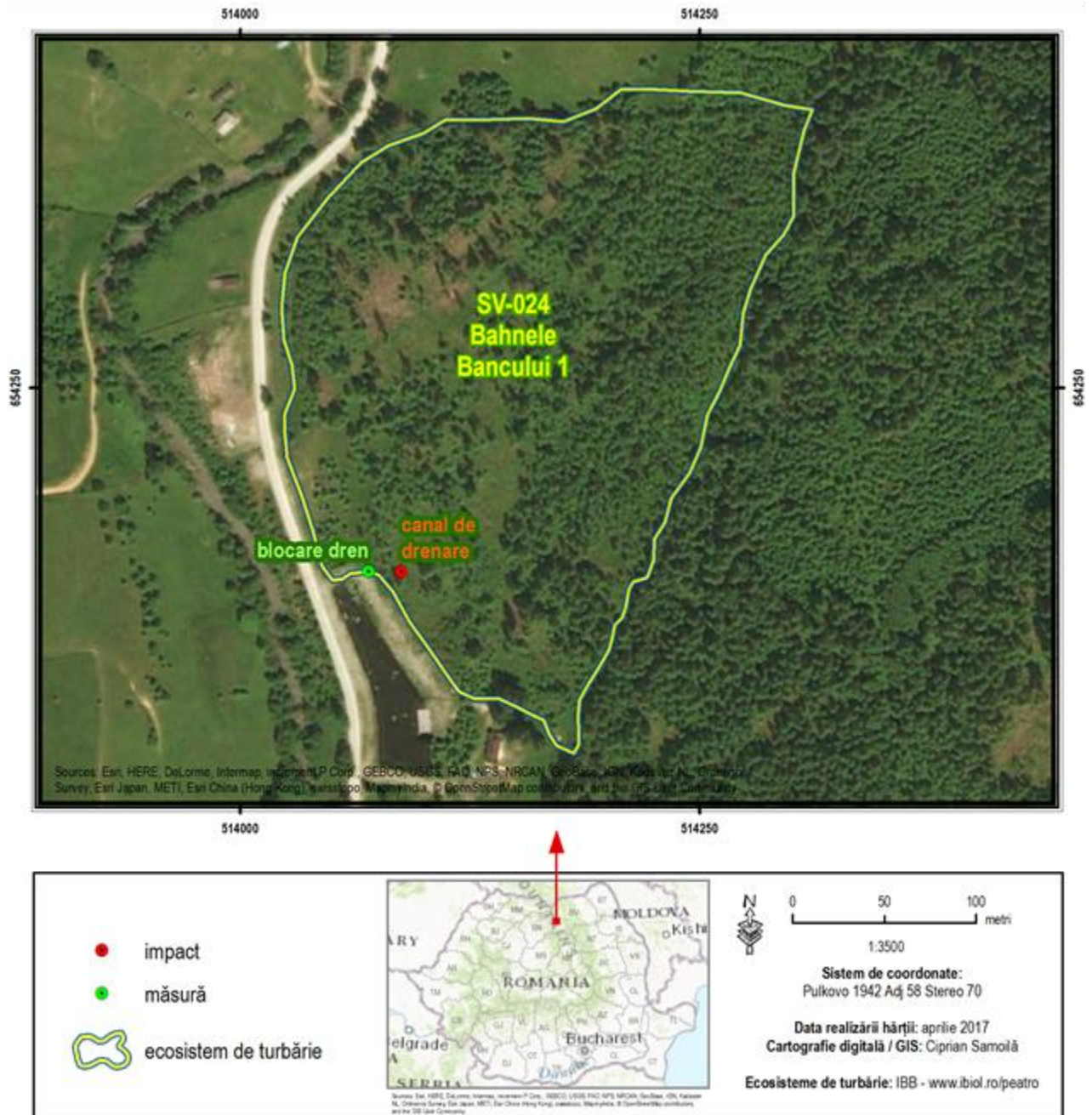
Data realizării hărții: aprilie 2017
Cartografie digitală / GIS: Ciprian Samoilă

Ecosisteme de turbărie: IBB - www.ibiol.ro/peatro

Sources: Esri, HERE, DeLorme, Intermap, increment P Corp., GEBCO, USGS, FAO, NPS, NRCAN, GeoBase, IGN, Kadaster NL, Ordnance Survey, Esri Japan, METI, Esri China (Hong Kong), swisstopo, MapmyIndia, © OpenStreetMap contributors, and the GIS User Community

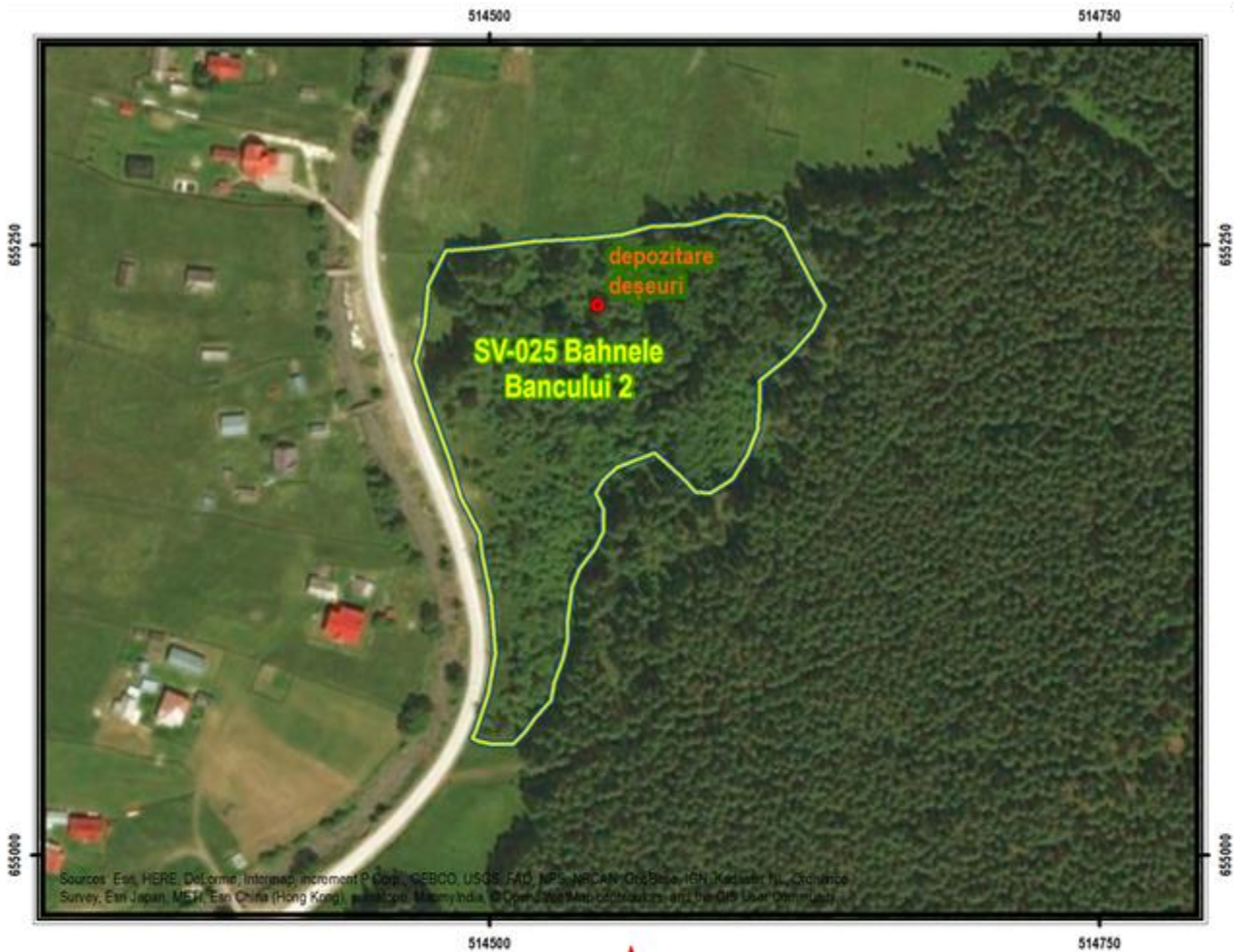
Restoration scheme no. 10

SV-024 – Bahnele Bancului 1



Restoration scheme no. 11

SV-025 – Bahnele Bancului 2



Sources: Esri, HERE, DeLorme, Intermap, increment P Corp., GEBCO, USGS, FAO, NPS, NRCAN, GeBCO, IGN, Kartus, Swis, Cdnance Survey, Esri Japan, MEI, Esri China (Hong Kong), SwisTopo, Mapbox, Mapbox, and the GIS User Community

 impact

 ecosistem de turbărie



Scale: 0 50 100 metri
1:3000

Sistem de coordonate:
Pulkovo 1942 Adj 58 Stereo 70

Data realizării hărții: aprilie 2017
Cartografie digitală / GIS: Ciprian Samoilă

Ecosisteme de turbărie: IBB - www.ibb.ro/peatro