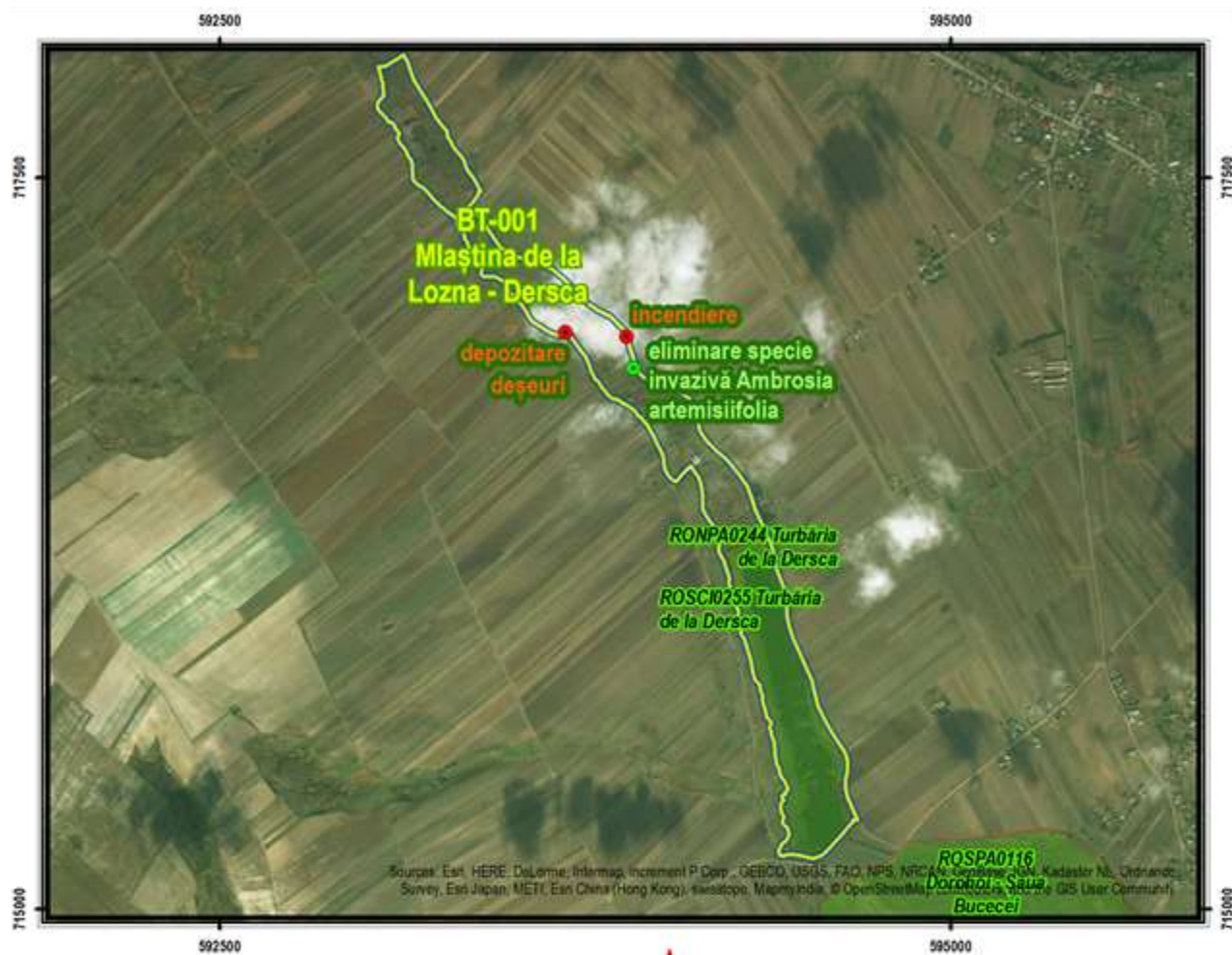


Annex 9 Restoration schemes NE-2 Region

Restoration scheme no. 1

BT-001 – Mlaștina de la Lozna – Dersca



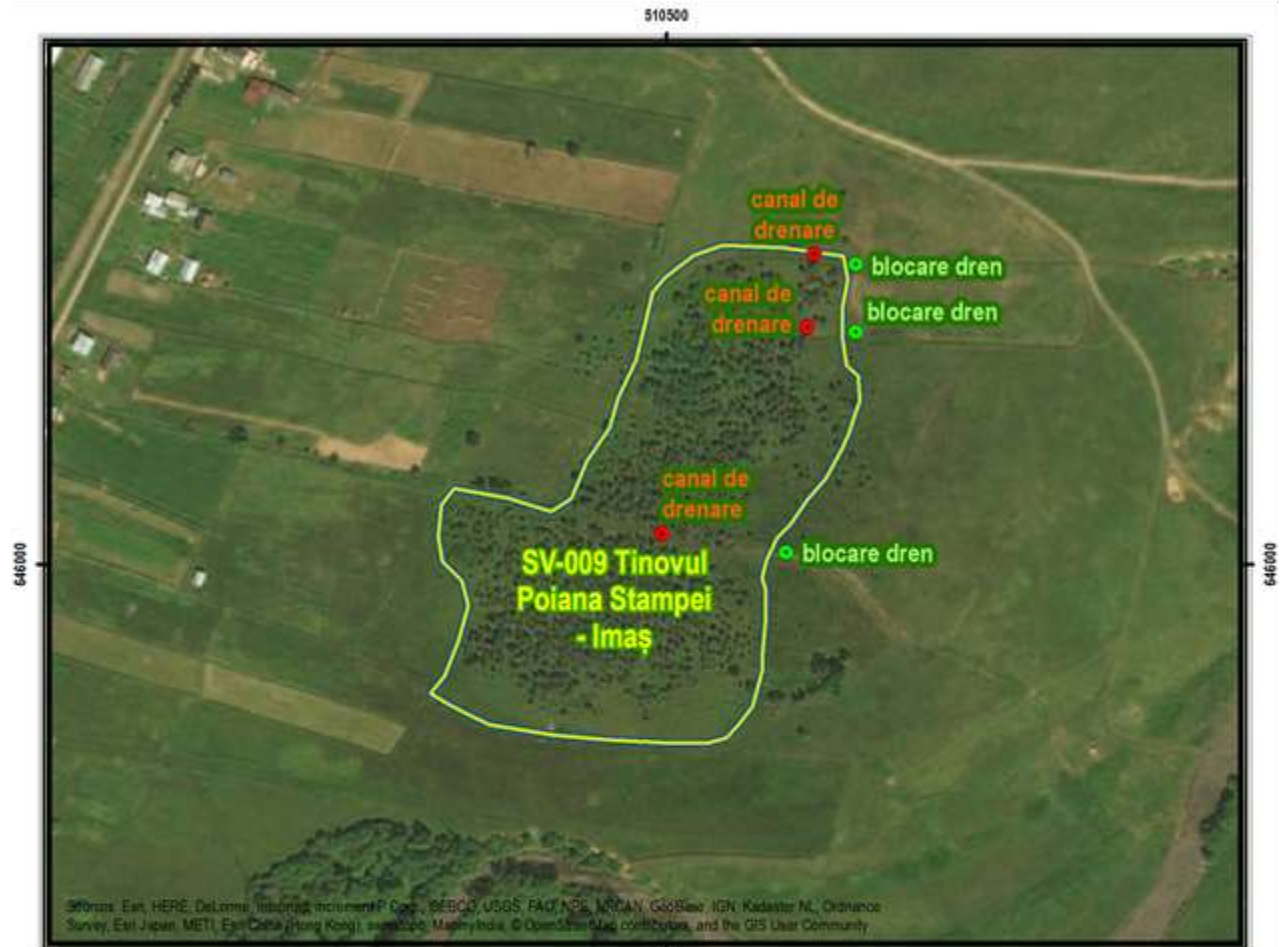
Restoration scheme no. 2

SV-005 – Mlaștina Drăgoioasa



Restoration scheme no. 4

SV-009 – Tinovul Poiana Stampei - Imaș



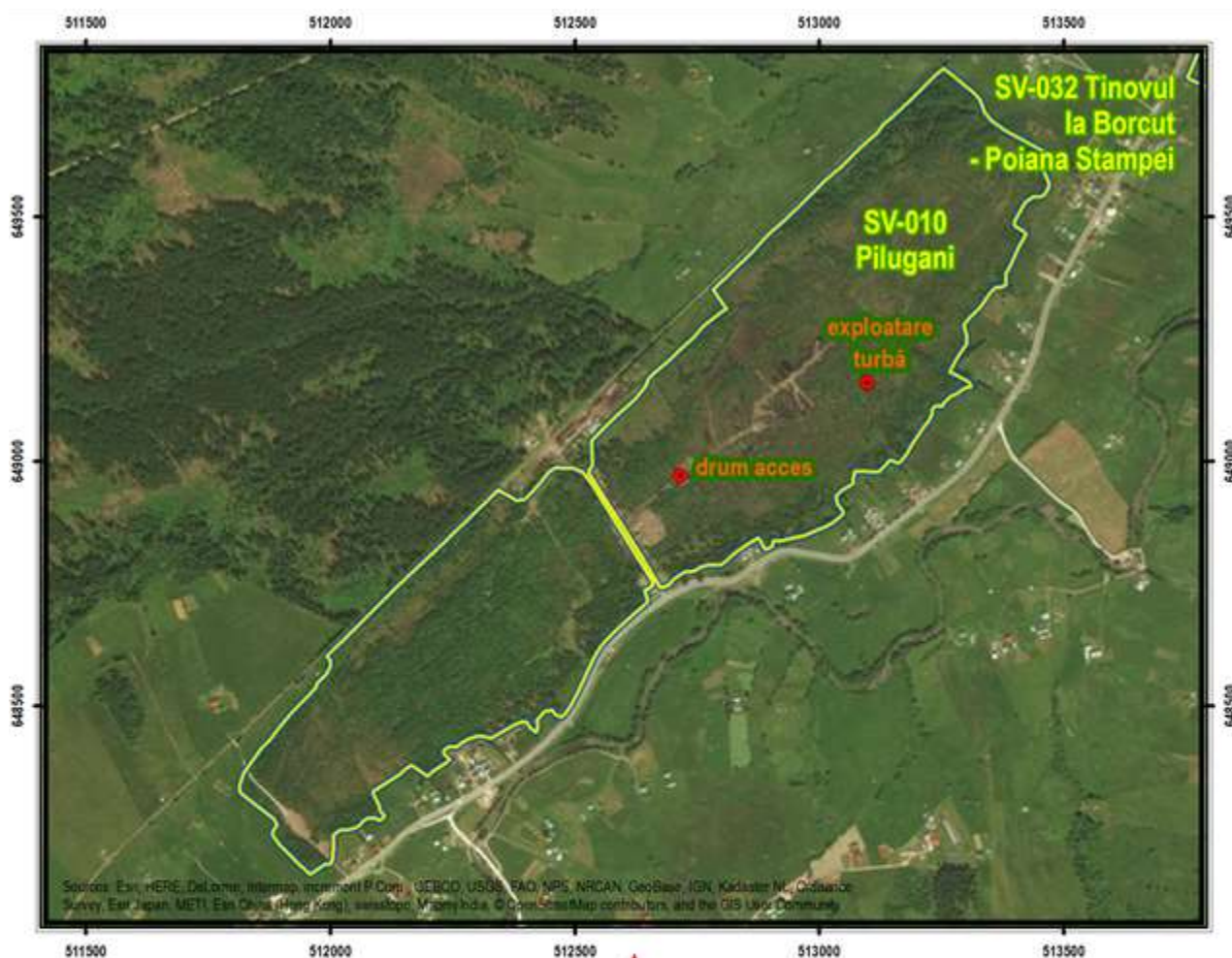
© 2017 Esri, HERE, DeLorme, Intermap, increment P Corp., GEBCO, USGS, FAO, NPS, NRCAN, GeoBC, IGN, Kadaster NL, Ordnance Survey, Esri Japan, METI, Esri China (Hong Kong), Swisstopo, Mapbox India, © OpenStreetMap contributors, and the GIS User Community



Restoration scheme no. 5

SV-010 – Pilugani

SV-032 – Tinovul la Borcut – Poiana Stampei



Sources: Esri, HERE, DeLorme, Intermap, increment P Corp., GEBCO, USGS, FAO, NPS, NRCAN, GeoBase, IGN, Kadaster NL, Ordnance Survey, Esri Japan, METI, Esri China (Hong Kong), Swisstopo, Mapbox India, © OpenStreetMap contributors, and the GIS User Community



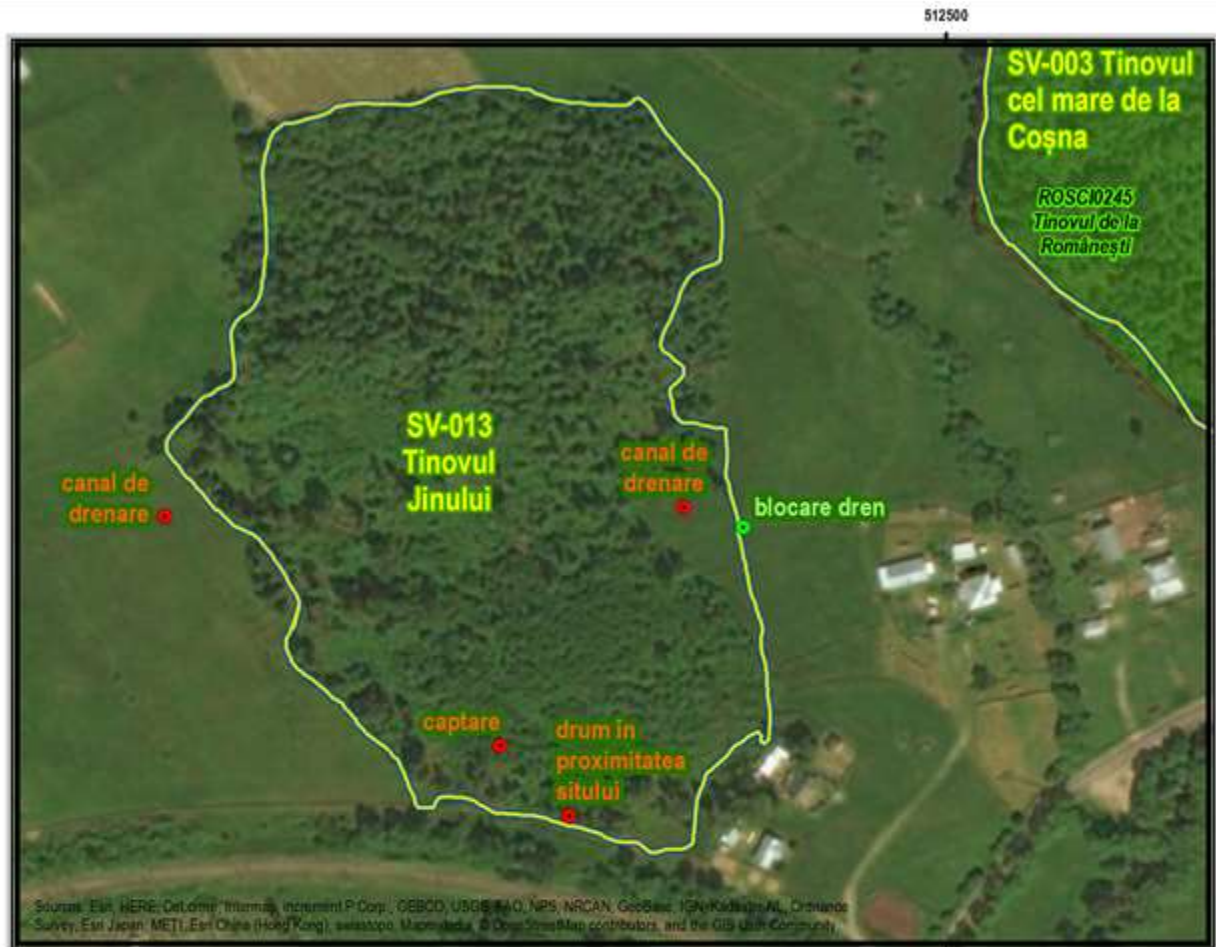
Restoration scheme no. 6

SV-011 – Mlaștina turboasă de la Criștișor (Lunca Negrei Broștenilor)



Restoration scheme no. 7

SV-013 – Tinovul Jinului



Source: Esri, HERE, DeLorme, Intermap, increment P Corp., GEBCO, USGS, FAO, NPS, NRCAN, GeoBase, IGN, Kadaster NL, Ordnance Survey, Esri Japan, METI, Esri China (Hong Kong), Swisstopo, Mapbox, © OpenStreetMap contributors, and the GIS User Community



Restoration scheme no. 8

SV-017 – Tinovul Ortoaia

