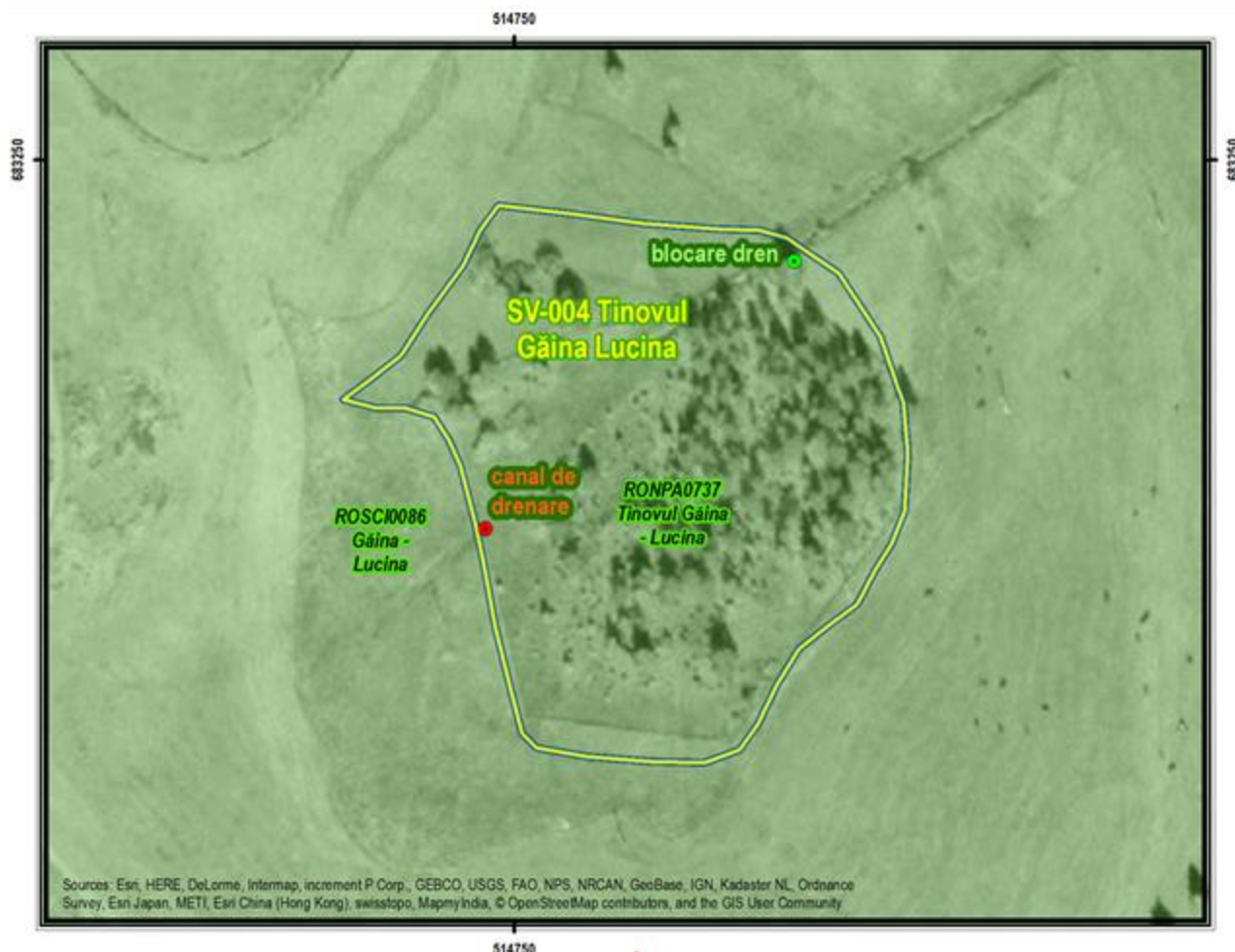


Annex 7.3 Restoration schemes NE-1 Region

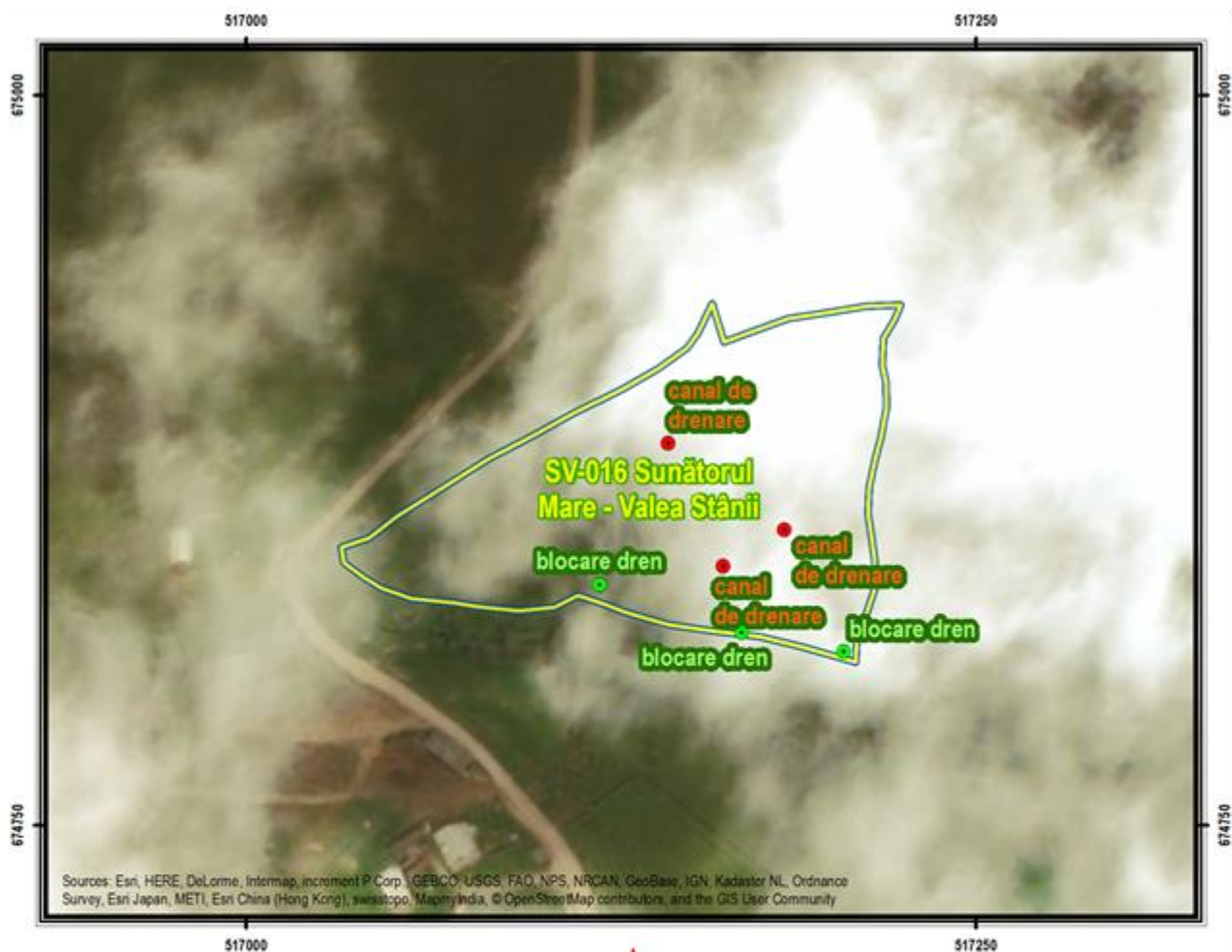
Restoration scheme no. 1

SV-004 – Tinovul Găina Lucina



Restoration scheme no. 2

SV-016 – Sunătorul Mare – Valea Stâinii



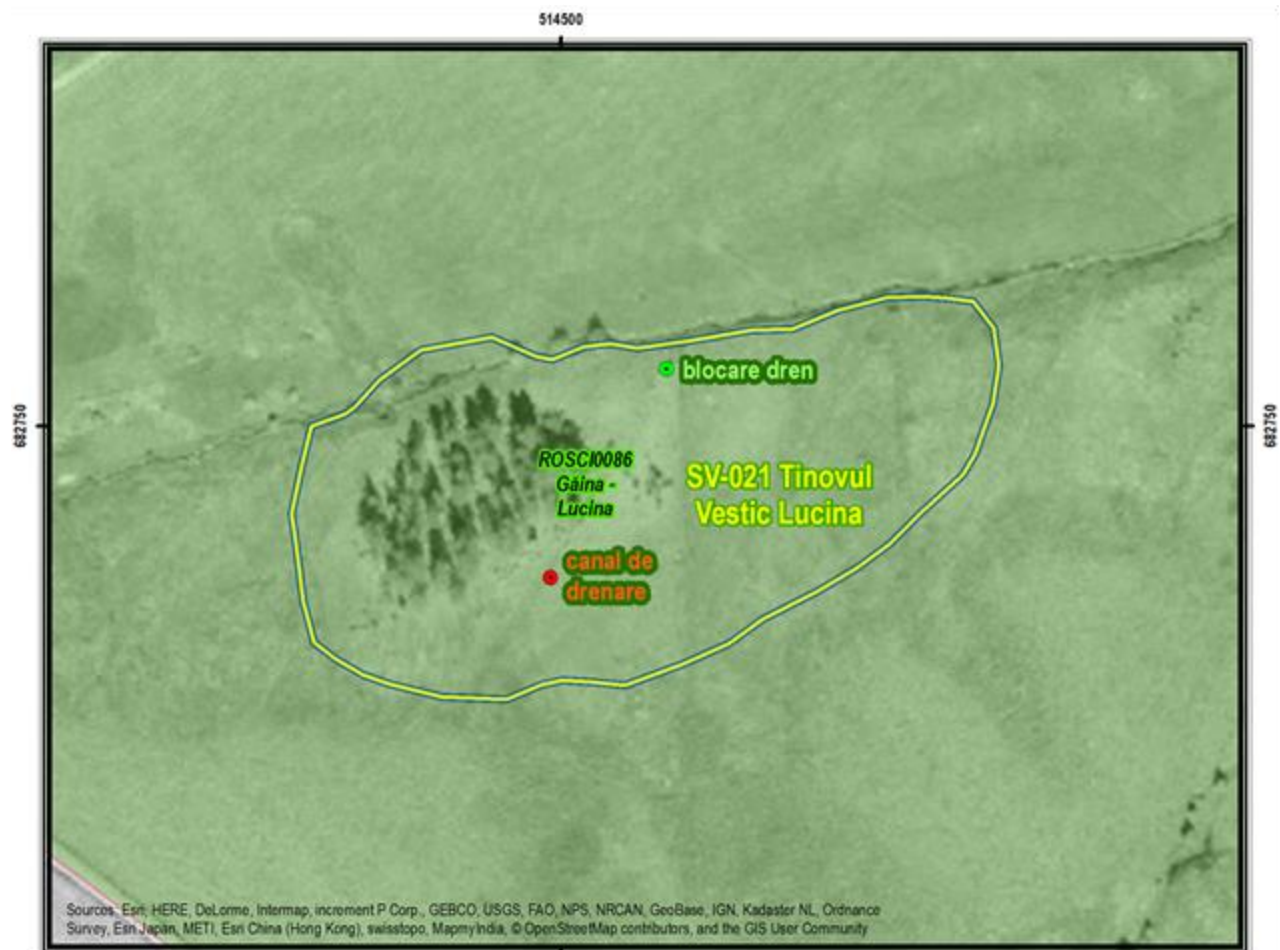
Restoration scheme no. 4

SV-020 – Tinovul de lângă drum - Lucina



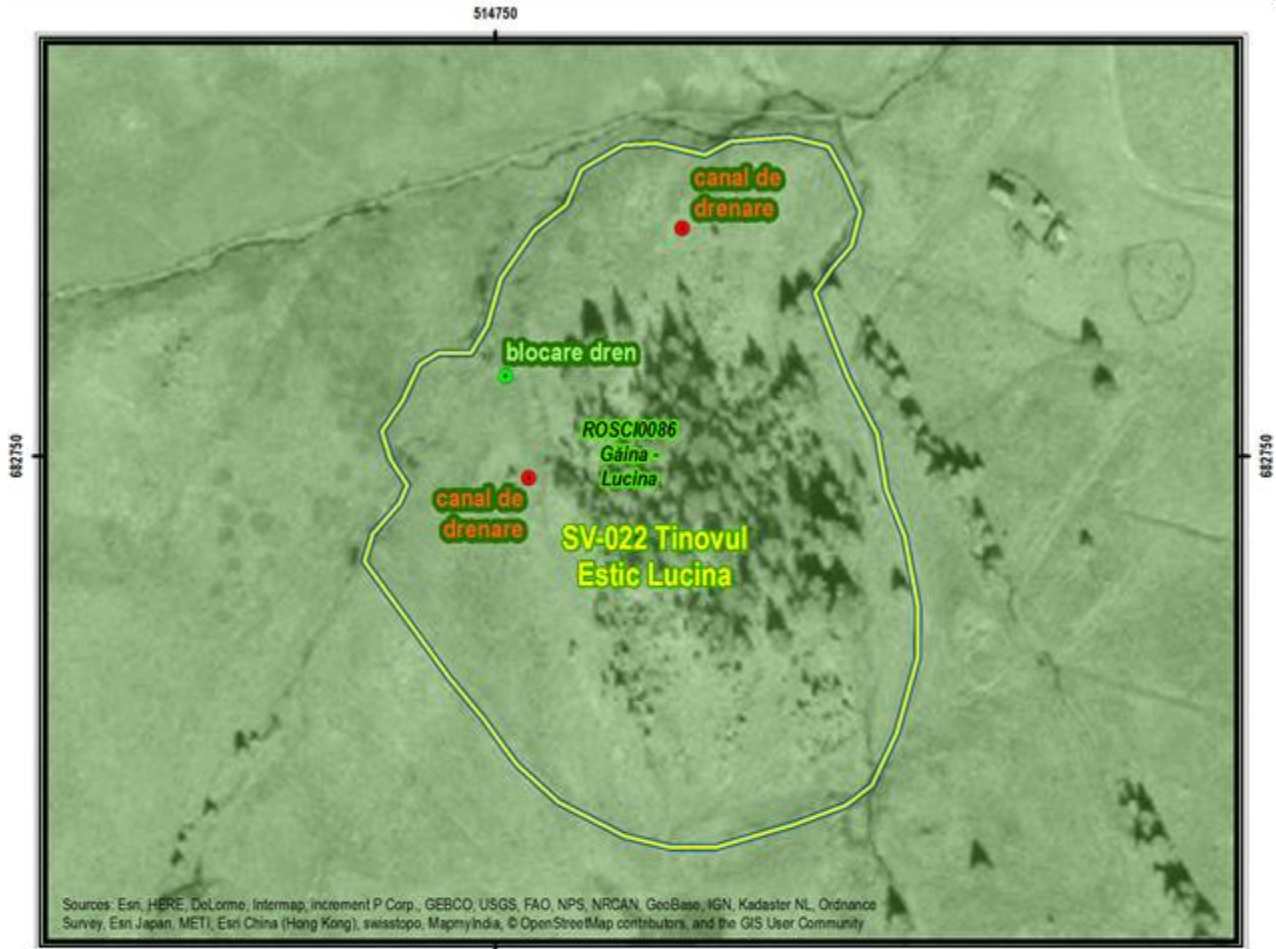
Restoration scheme no. 5

SV-021 – Tinovul Vestic Lucina



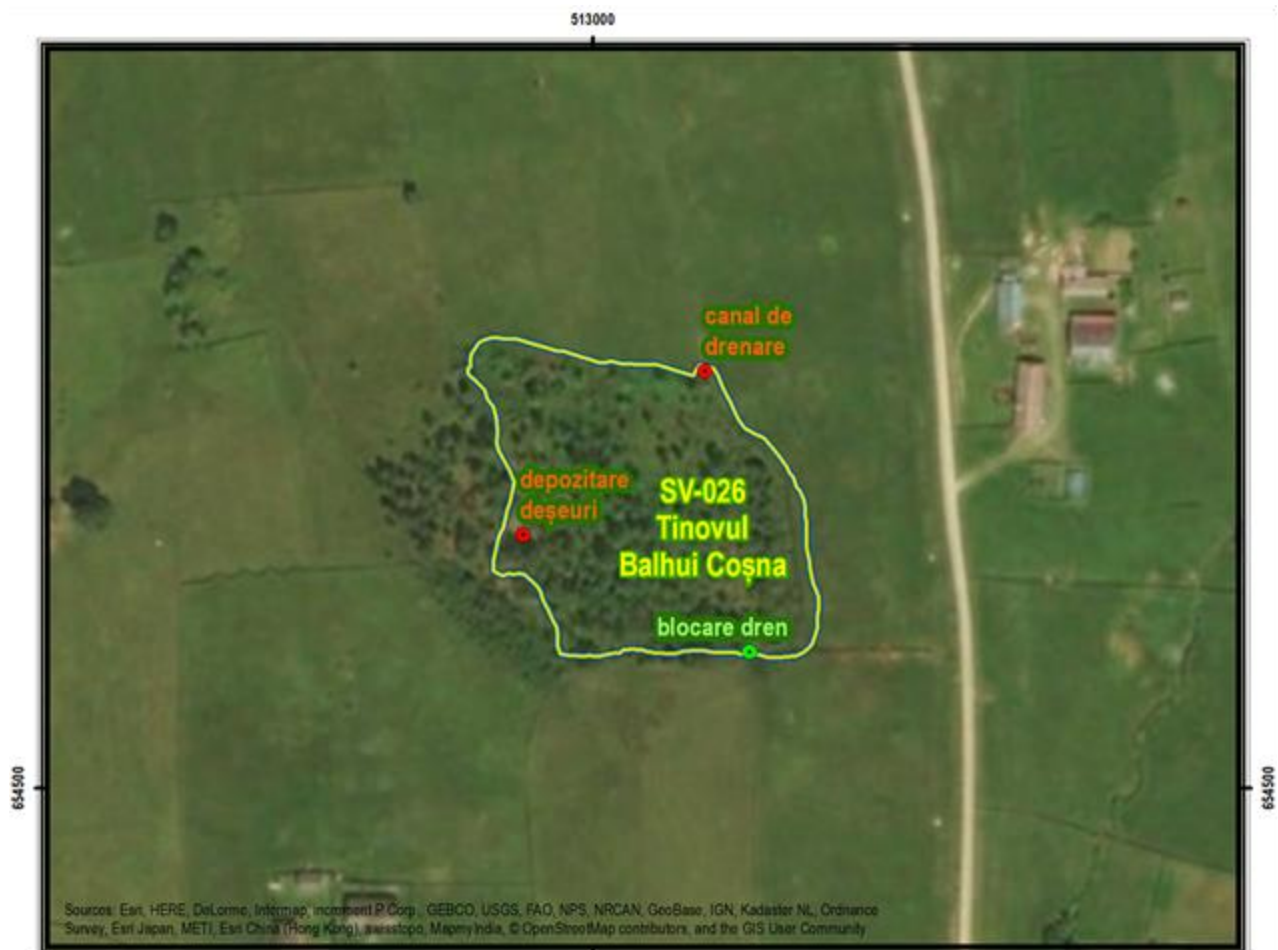
Restoration scheme no. 6

SV-022 – Tinovul Estic Lucina



Restoration scheme no. 7

SV-026 – Tinovul Balhui Coșna



Restoration scheme no. 8

SV-027 – Terenul tinovos din spatele școlii Coșna



Restoration scheme no. 9

SV-028 – Teșna Românești



Legend:

- impact
- ecosistem de turbărie
- arie naturală protejată

Map of Romania: A small map of Romania with a red arrow pointing to the location of the restoration site. Neighboring countries (SERBIA, MOLDOVA) and major cities (București, Cluj, Iași, Timișoara) are labeled.

Scale and Coordinates:

- Scale: 0, 50, 100 metri
- Scale factor: 1:3500
- Sistem de coordonate: Pulkovo 1942 Adj 58 Stereo 70
- Data realizării hărții: aprilie 2017
- Cartografie digitală / GIS: Ciprian Samoilă
- Ecosisteme de turbărie: IBB - www.ibb.ro/peatro

Sources: Esri, HERE, DeLorme, Intermap, increment P Corp., GEBCO, USGS, FAO, NPS, NRCAN, GeoBase, IGN, Kadaster NL, Ordnance Survey, Esri Japan, METI, Esri China (Hong Kong), Swisstopo, Mapbox India, © OpenStreetMap contributors, and the GIS User Community

Restoration scheme no. 10

SV-029 – Teșna

