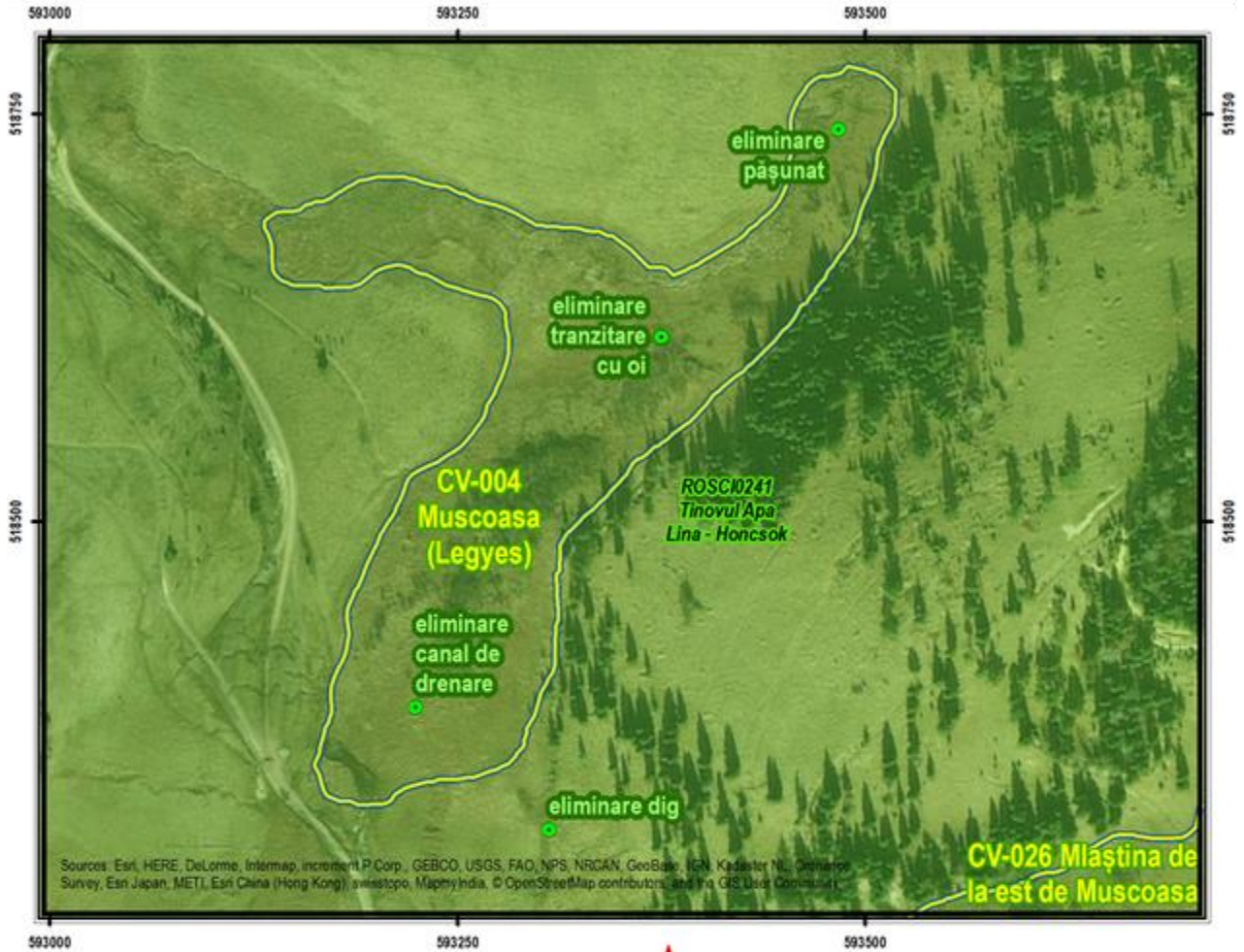


# Annex 7.2 Restoration schemes Center Region

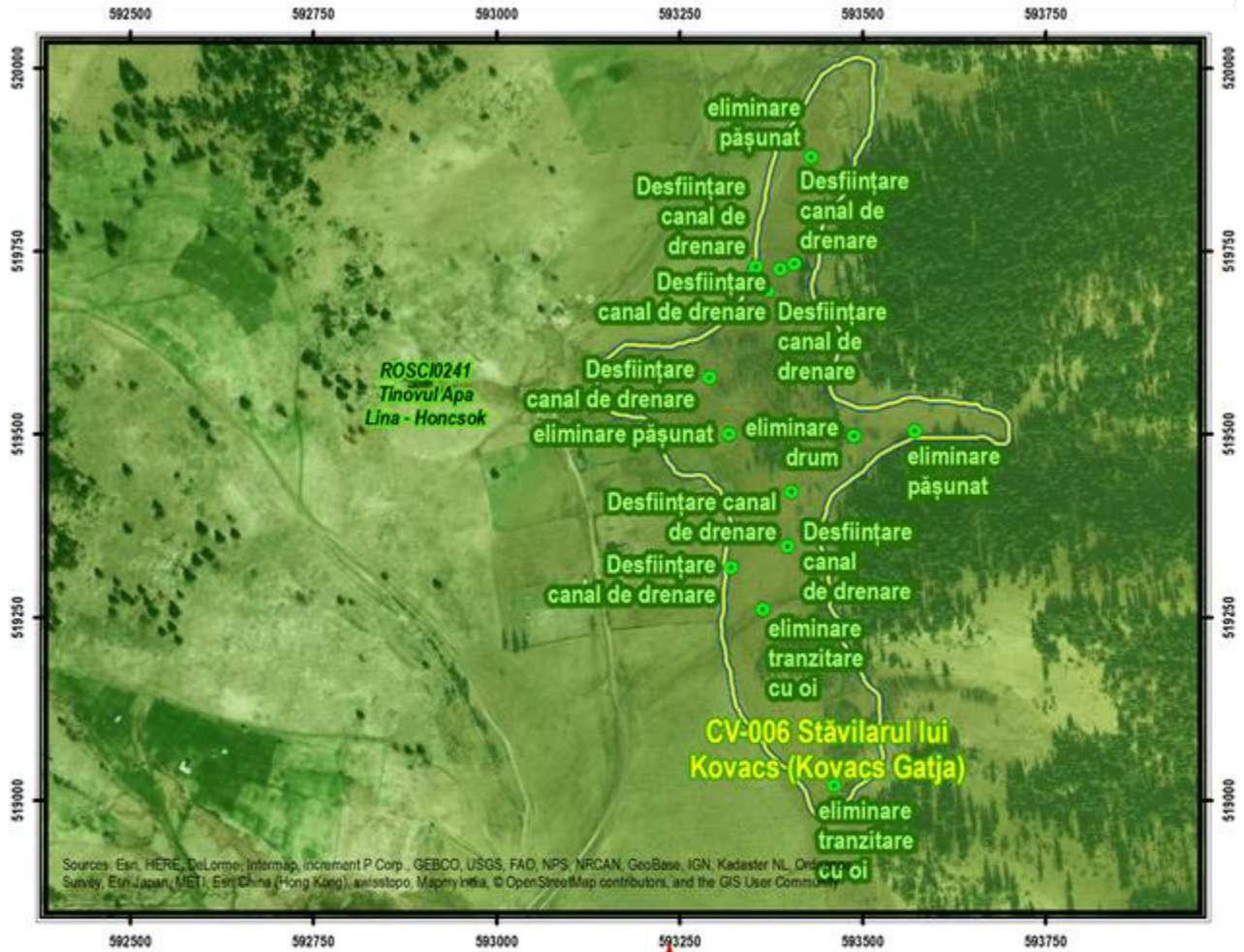
## Restoration scheme no. 1

### CV-004 – Muscoasa



## Restoration scheme no. 2

### CV-006 – Stăvilarul lui Kovacs





### Restoration scheme no. 3

### CV-008 – Tinovul Apa Roșie – Fagul Rotund



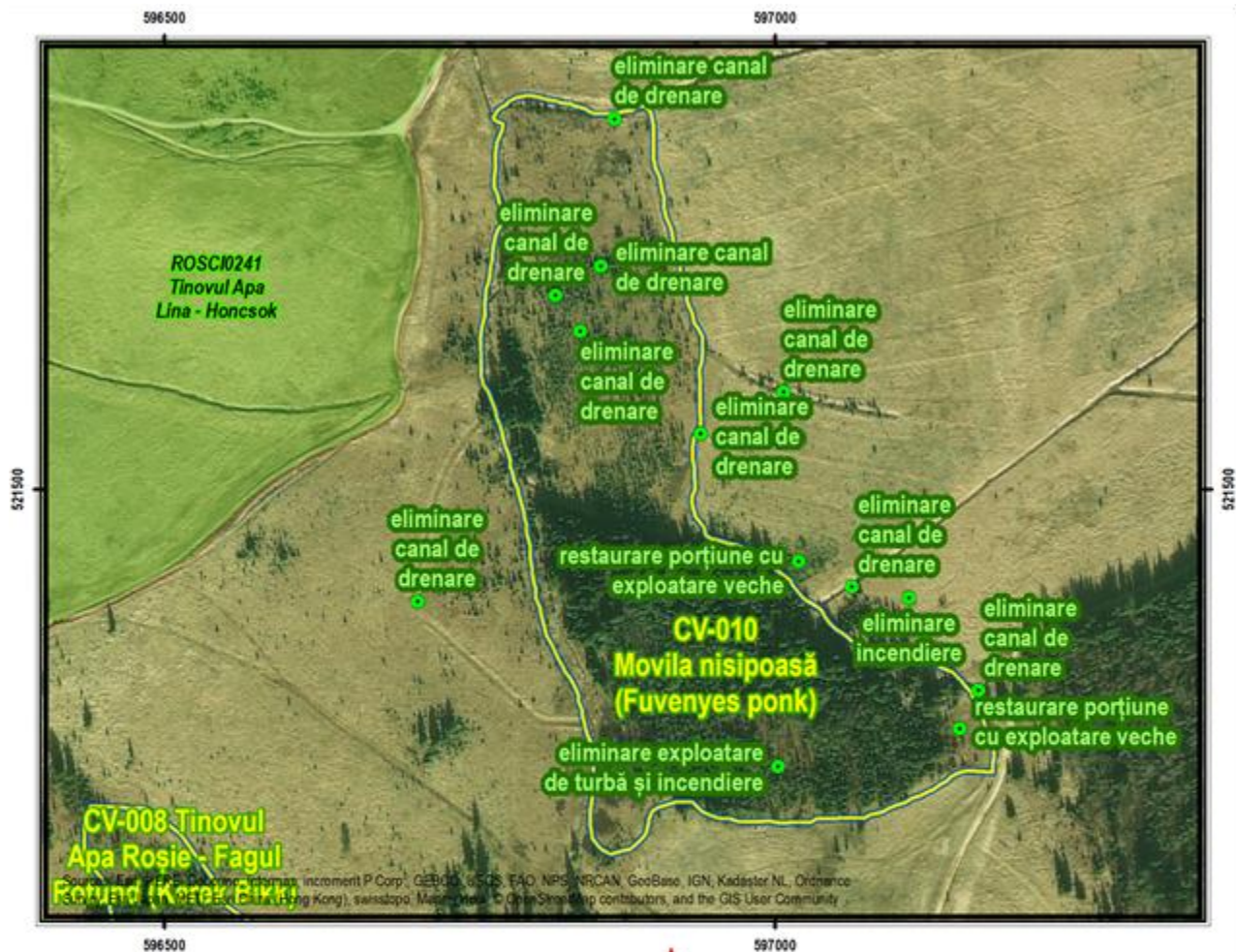
Sursa: Esri, HERE, DeLorme, Intermap, increment P Corp., GEBCO, USGS, FAO, NPS, NRCAN, GeoBase, IGN, Kadaster NL, Ordnance Survey, Esri Japan, METI, Esri China (Hong Kong), Swisstopo, Mapbox, © OpenStreetMap contributors, and the GIS User Community

 măsură			 0 50 100 150 200 250 300 metri	
 ecosistem de turbărie				Sistem de coordonate: Pulkovo 1942 Adj 58 Stereo 70
 arie naturală protejată				Data realizării hărții: aprilie 2017 Cartografie digitală / GIS: Ciprian Samoilă
Ecosisteme de turbărie: IBB - <a href="http://www.ibb.ro/peatro">www.ibb.ro/peatro</a>				

Sursa: Esri, HERE, DeLorme, Intermap, increment P Corp., GEBCO, USGS, FAO, NPS, NRCAN, GeoBase, IGN, Kadaster NL, Ordnance Survey, Esri Japan, METI, Esri China (Hong Kong), Swisstopo, Mapbox, © OpenStreetMap contributors, and the GIS User Community

## Restoration scheme no. 4

### CV-010 – Movila Nisipoasă





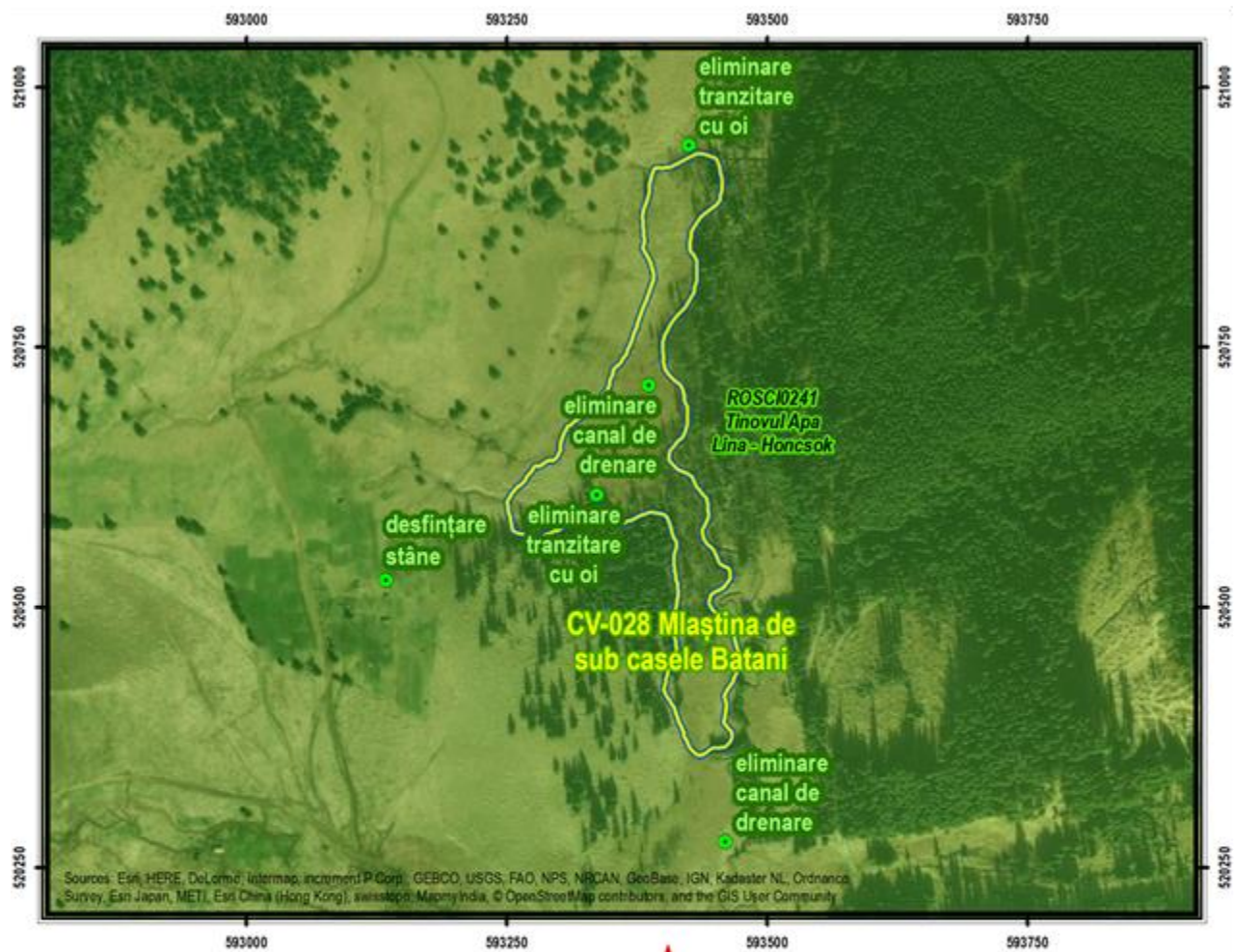
## Restoration scheme no. 5

### CV-026 – Mlaștina de la est de Muscoasa



## Restoration scheme no. 6

### CV-028 – Mlaștina de sub casele Batani



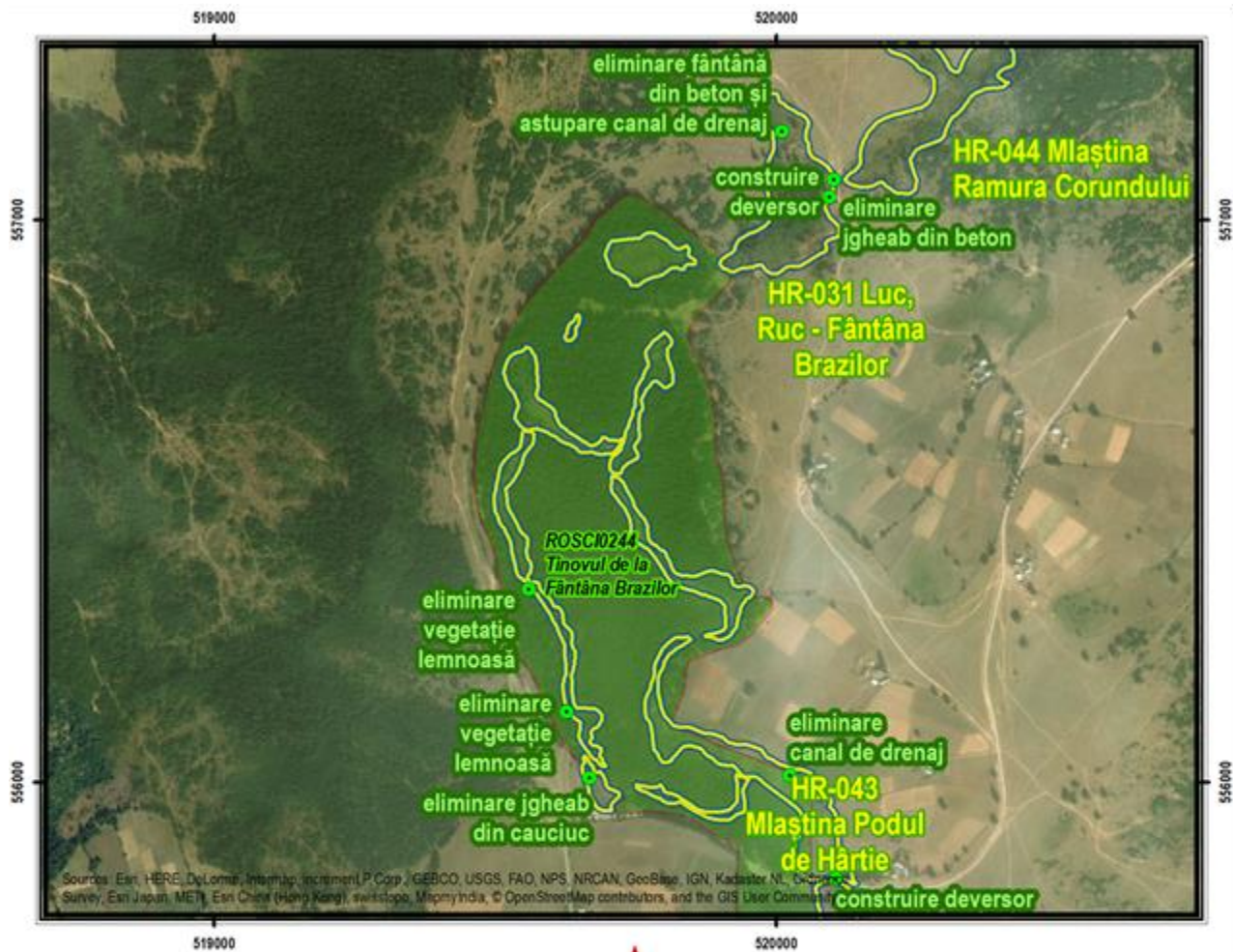


## Restoration scheme no. 7

HR-031 – Mlaștina Luc, Ruc – Fântâna Brazilor

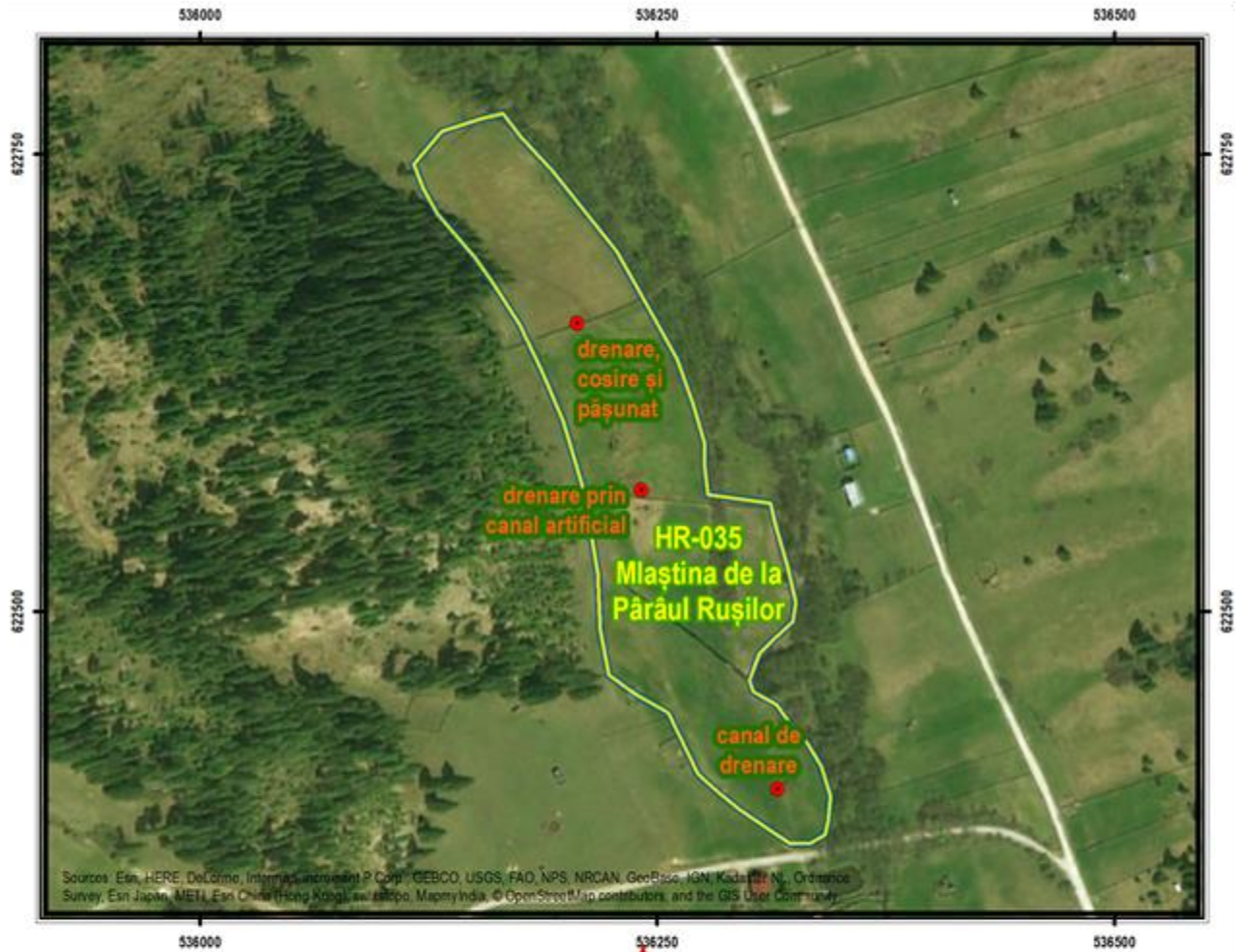
HR-043 – Mlaștina Podul de Hârtie

HR-044 – Mlaștina Ramura Corundului



## Restoration scheme no. 8

### HR-035 – Mlaștina de la Pârâul Rușilor

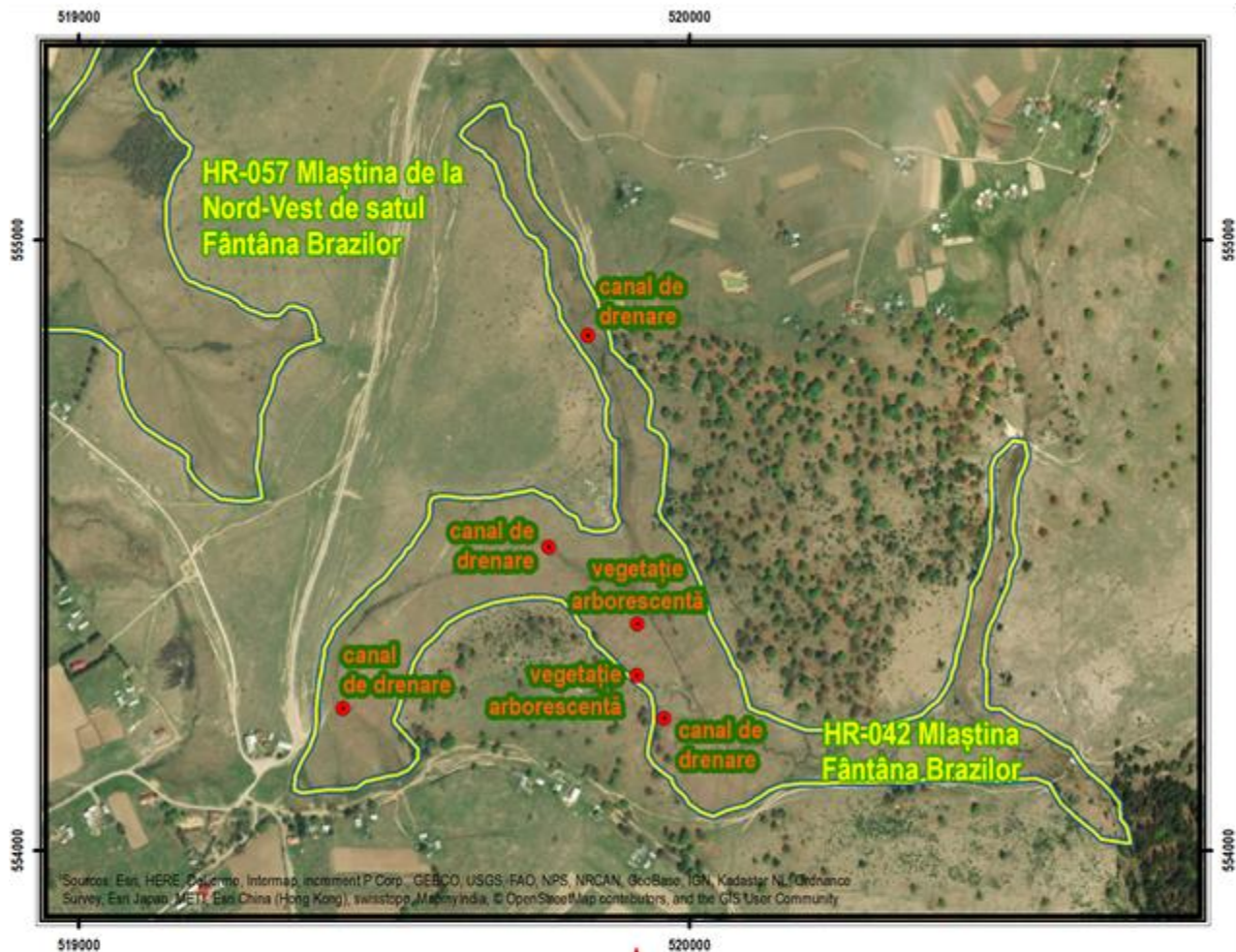




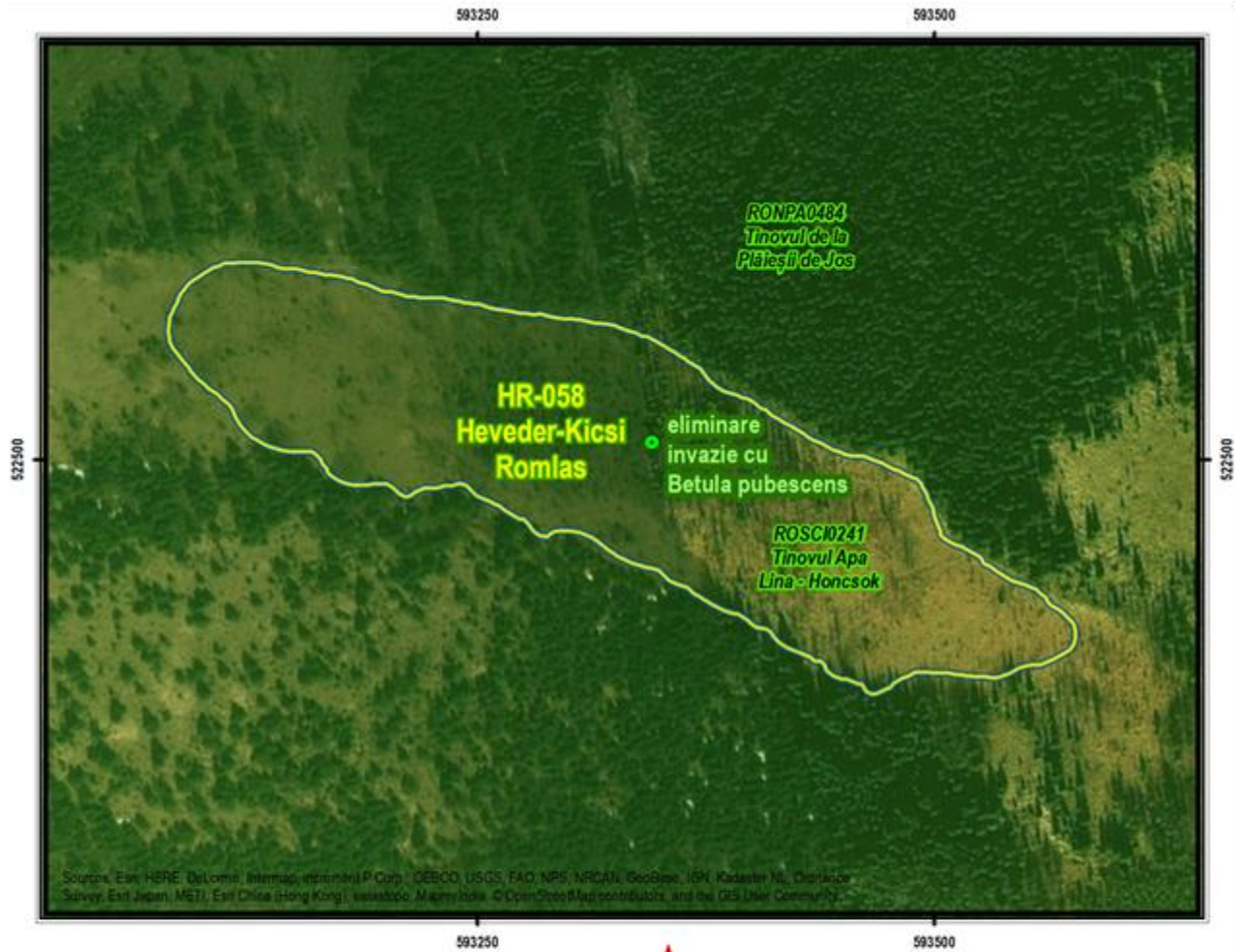
## Restoration scheme no. 9

HR-042 – Mlaștina Fântâna Brazilor

HR-057 – Mlaștina de la Nord-Vest de satul Fântâna Brazilor



Restoration scheme no. 10  
 HR-058 – Heveder-Kicsi Romlas

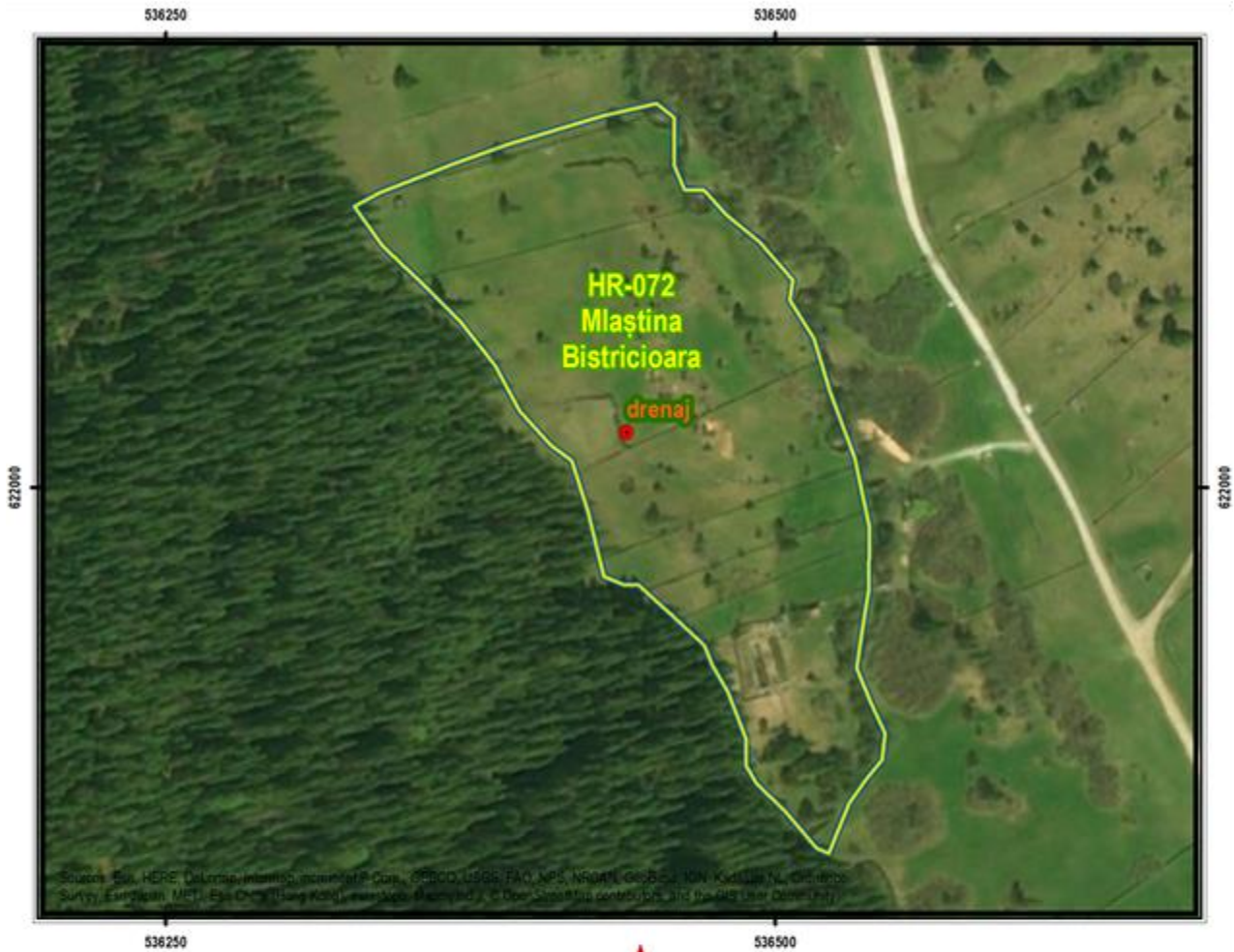


<ul style="list-style-type: none"> <li><span style="color: green;">●</span> măsură</li> <li><span style="border: 2px solid green; border-radius: 50%; padding: 2px;"> </span> ecosistem de turbărie</li> <li><span style="background-color: #c8e6c9; border: 1px solid #81c784; padding: 2px;"> </span> arie naturală protejată</li> </ul>		<p>N</p> <p>0 50 100 metri</p> <p>1:4000</p>
<p>Sistem de coordonate:        Pulkovo 1942 Ad 58 Stereo 70</p> <p>Data realizării hărții: aprilie 2017        Cartografie digitală / GIS: Ciprian Samoilă</p> <p>Ecosisteme de turbărie: IBB - <a href="http://www.ibb.ro/peatro">www.ibb.ro/peatro</a></p>		



# Restoration scheme no. 11

## HR-072 – Mlaștina Bistricioara



● impact

○ ecosistem de turbărie

0 50 100 metri

1:3000

Sistem de coordonate:  
Pulkovo 1942 Ad 58 Stereo 70

Data realizării hărții: aprilie 2017  
Cartografie digitală / GIS: Ciprian Samoilă

Ecosisteme de turbărie: IBB - [www.ibiol.ro/peatro](http://www.ibiol.ro/peatro)