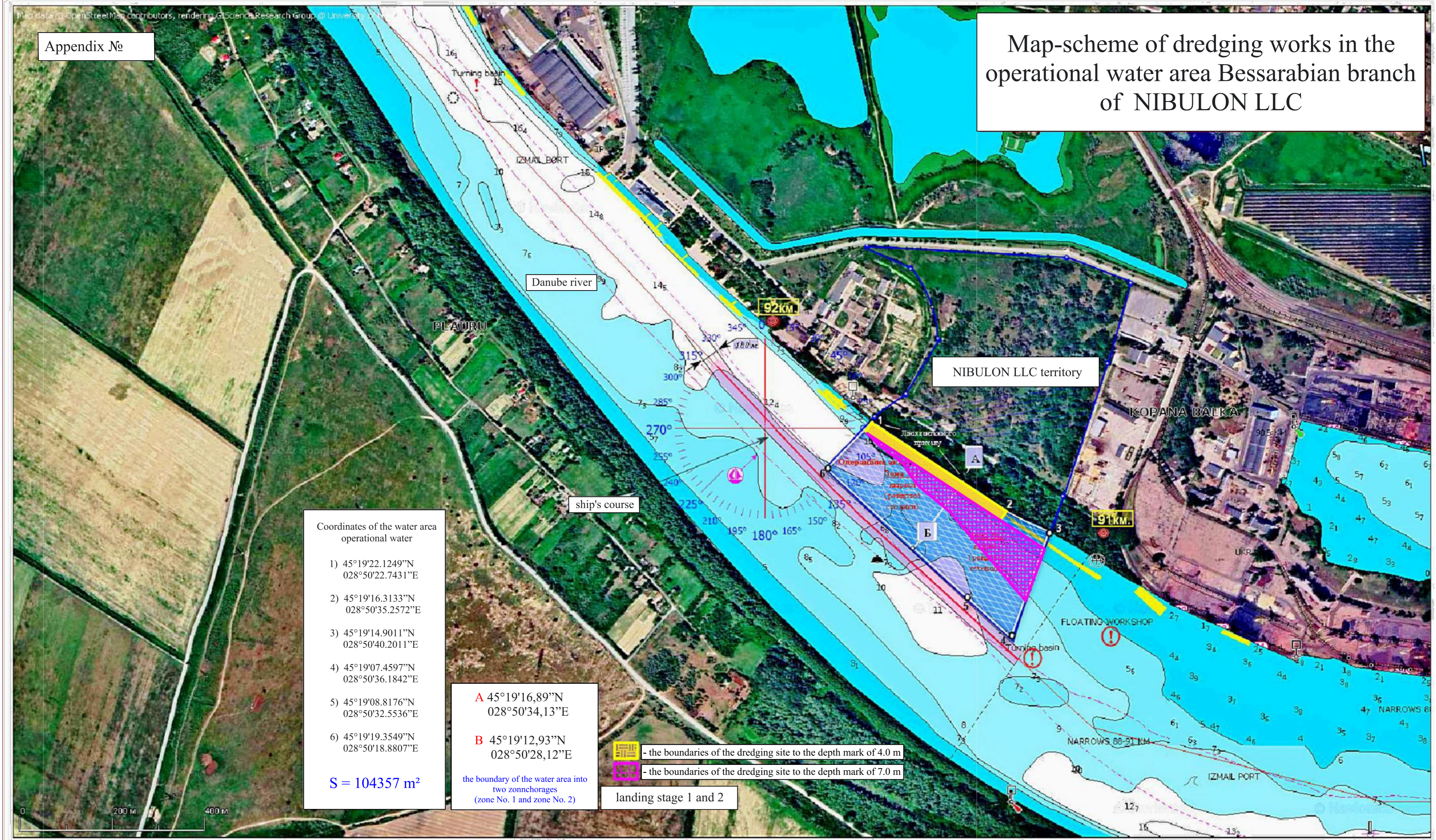


Map-scheme of dredging works in the operational water area Bessarabian branch of NIBULON LLC



Coordinates of the water area operational water

- 1) 45°19'22.1249"N
028°50'22.7431"E
- 2) 45°19'16.3133"N
028°50'35.2572"E
- 3) 45°19'14.9011"N
028°50'40.2011"E
- 4) 45°19'07.4597"N
028°50'36.1842"E
- 5) 45°19'08.8176"N
028°50'32.5536"E
- 6) 45°19'19.3549"N
028°50'18.8807"E

S = 104357 m²

A 45°19'16,89"N
028°50'34,13"E

B 45°19'12,93"N
028°50'28,12"E

the boundary of the water area into two zonnchorage (zone No. 1 and zone No. 2)

- the boundaries of the dredging site to the depth mark of 4.0 m

- the boundaries of the dredging site to the depth mark of 7.0 m

landing stage 1 and 2

